

PRG2 Antibody (Center)
Affinity Purified Rabbit Polyclonal Antibody (Pab)
Catalog # AP5732c

Specification

PRG2 Antibody (Center) - Product Information

Application	IHC-P, WB,E
Primary Accession	O6T4P5
Other Accession	NP_079164.1
Reactivity	Human
Host	Rabbit
Clonality	Polyclonal
Isotype	Rabbit IgG
Calculated MW	76037
Antigen Region	316-344

PRG2 Antibody (Center) - Additional Information

Gene ID 79948

Other Names

Lipid phosphate phosphatase-related protein type 3, PAP-2-like protein 2, Plasticity-related gene 2 protein, PRG-2, LPPR3, PHP2, PRG2

Target/Specificity

This PRG2 antibody is generated from rabbits immunized with a KLH conjugated synthetic peptide between 316-344 amino acids from the Central region of human PRG2.

Dilution

IHC-P~~1:50~100

WB~~1:1000

E~~Use at an assay dependent concentration.

Format

Purified polyclonal antibody supplied in PBS with 0.09% (W/V) sodium azide. This antibody is purified through a protein A column, followed by peptide affinity purification.

Storage

Maintain refrigerated at 2-8°C for up to 2 weeks. For long term storage store at -20°C in small aliquots to prevent freeze-thaw cycles.

Precautions

PRG2 Antibody (Center) is for research use only and not for use in diagnostic or therapeutic procedures.

PRG2 Antibody (Center) - Protein Information

Name PLPPR3 ([HGNC:23497](#))

Cellular Location

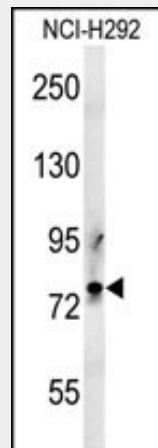
Membrane; Multi-pass membrane protein

PRG2 Antibody (Center) - Protocols

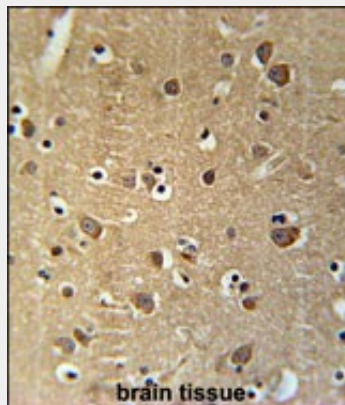
Provided below are standard protocols that you may find useful for product applications.

- [Western Blot](#)
- [Blocking Peptides](#)
- [Dot Blot](#)
- [Immunohistochemistry](#)
- [Immunofluorescence](#)
- [Immunoprecipitation](#)
- [Flow Cytometry](#)
- [Cell Culture](#)

PRG2 Antibody (Center) - Images



PRG2 Antibody (Center) (Cat. #AP5732c) western blot analysis in NCI-H292 cell line lysates (35ug/lane). This demonstrates the PRG2 antibody detected the PRG2 protein (arrow).



PRG2 Antibody (Center) (Cat. #AP5732c) immunohistochemistry analysis in formalin fixed and paraffin embedded human brain tissue followed by peroxidase conjugation of the secondary antibody and DAB staining. This data demonstrates the use of the PRG2 Antibody (Center) for immunohistochemistry. Clinical relevance has not been evaluated.

PRG2 Antibody (Center) - Background

The proteins in the lipid phosphate phosphatase (LPP) family, including PRG2, are integral membrane proteins that modulate bioactive lipid phosphates including phosphatidate, lysophosphatidate, and sphingosine-1-phosphate in the context of cell migration, neurite retraction, and mitogenesis (Brauer et al., 2003 [PubMed 12730698]).

PRG2 Antibody (Center) - References

Brauer, A.U., et al. Nat. Neurosci. 6(6):572-578(2003)

PRG2 Antibody (Center) - Citations

- [The Axonal Membrane Protein PRG2 Inhibits PTEN and Directs Growth to Branches](#)