

Naked1 Polyclonal Antibody
Purified Rabbit Polyclonal Antibody (Pab)
Catalog # AP57349

Specification

Naked1 Polyclonal Antibody - Product Information

| | |
|--------------------------------|---|
| Application | WB, IHC-P, IHC-F, IF, ICC |
| Primary Accession | Q969G9 |
| Reactivity | Rat, Dog |
| Host | Rabbit |
| Clonality | Polyclonal |
| Calculated MW | 52 KDa |
| Physical State | Liquid |
| Immunogen | KLH conjugated synthetic peptide derived from human Naked1 |
| Epitope Specificity | 301-400/470 |
| Isotype | IgG |
| Purity | |
| affinity purified by Protein A | |
| Buffer | 0.01M TBS (pH7.4) with 1% BSA, 0.02% Proclin300 and 50% Glycerol. |
| SUBCELLULAR LOCATION | Cell membrane By similarity. Cytoplasm |
| SIMILARITY | Belongs to the NKD family. Contains 1 EF-hand domain. |
| SUBUNIT | Interacts with DVL1, DVL2, DVL3 and PPP2R3A. |
| Important Note | This product as supplied is intended for research use only, not for use in human, therapeutic or diagnostic applications. |

Background Descriptions

In the mouse, Nkd is a Dishevelled (see DVL1; MIM 601365)-binding protein that functions as a negative regulator of the Wnt (see WNT1; MIM 164820)-beta-catenin (see MIM 116806)-Tcf (see MIM 602272) signaling pathway.[supplied by OMIM, Jun 2003]

Naked1 Polyclonal Antibody - Additional Information

Gene ID 85407

Other Names

Protein naked cuticle homolog 1, Naked-1, hNkd, hNkd1, NKD1, NKD

Target/Specificity

Expressed in colon, heart, kidney, leukocyte, liver, lung, ovary, pancreas, placenta, prostate, skeletal muscle, small intestine and spleen.

Dilution

WB~~1:1000<br \>IHC-P~~N/A<br \><span class =

=<div>IHC-F</div>~<div>N/A</div><br \><div>IF</div>~<div>1:50~200</div><br \><div>ICC</div>~<div>N/A</div>

Storage

Store at -20 °C for one year. Avoid repeated freeze/thaw cycles. When reconstituted in sterile pH 7.4 0.01M PBS or diluent of antibody the antibody is stable for at least two weeks at 2-4 °C.

Naked1 Polyclonal Antibody - Protein Information

Name NKD1

Synonyms NKD

Function

Cell autonomous antagonist of the canonical Wnt signaling pathway. May activate a second Wnt signaling pathway that controls planar cell polarity.

Cellular Location

Cell membrane. Cytoplasm

Tissue Location

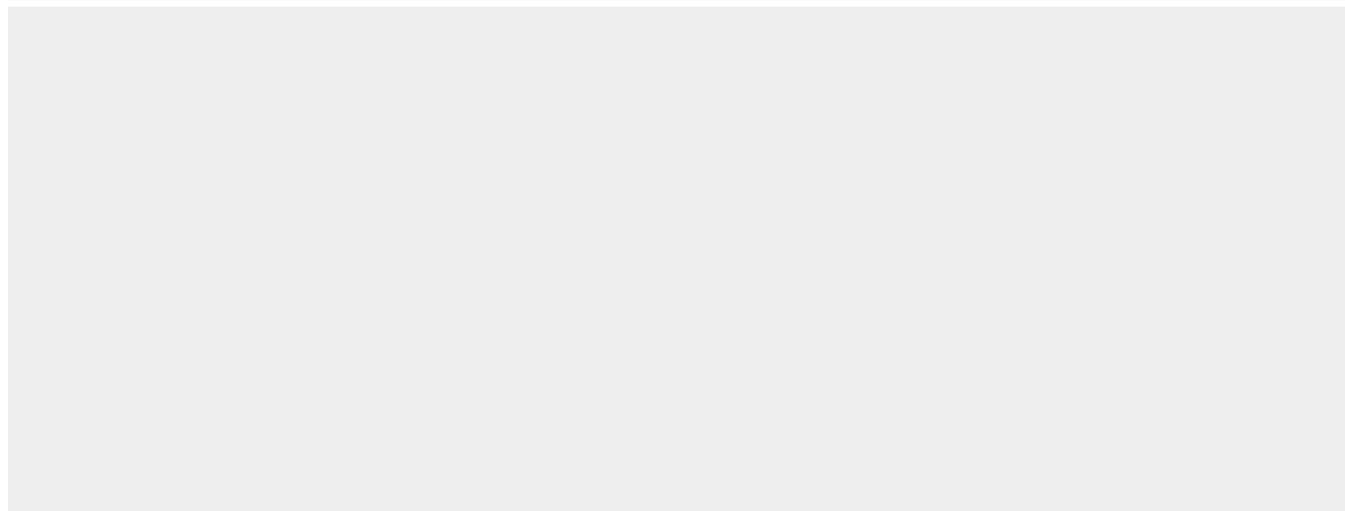
Expressed in colon, heart, kidney, leukocyte, liver, lung, ovary, pancreas, placenta, prostate, skeletal muscle, small intestine and spleen.

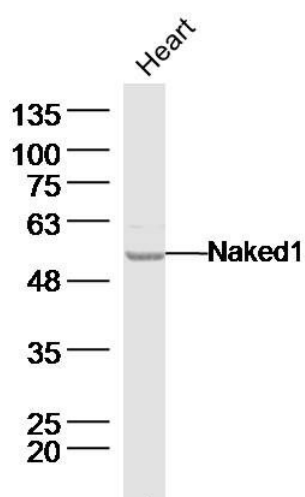
Naked1 Polyclonal Antibody - Protocols

Provided below are standard protocols that you may find useful for product applications.

- [Western Blot](#)
- [Blocking Peptides](#)
- [Dot Blot](#)
- [Immunohistochemistry](#)
- [Immunofluorescence](#)
- [Immunoprecipitation](#)
- [Flow Cytometry](#)
- [Cell Culture](#)

Naked1 Polyclonal Antibody - Images





Sample: Heart (Mouse) Lysate at 40 ug
Primary: Anti-Naked1 (bs-19005R) at 1/300 dilution
Secondary: IRDye800CW Goat Anti-Rabbit IgG at 1/20000 dilution
Predicted band size: 52 kD
Observed band size: 52 kD