

NAP1L4 Polyclonal Antibody
Purified Rabbit Polyclonal Antibody (Pab)
Catalog # AP57353**Specification****NAP1L4 Polyclonal Antibody - Product Information**

Application	IHC-P, IHC-F, IF, ICC
Primary Accession	Q99733
Reactivity	Rat, Pig, Dog, Bovine
Host	Rabbit
Clonality	Polyclonal
Calculated MW	43 KDa
Physical State	Liquid
Immunogen	KLH conjugated synthetic peptide derived from human NAP1L4
Epitope Specificity	2-100/375
Isotype	IgG
Purity	
affinity purified by Protein A	
Buffer	0.01M TBS (pH7.4) with 1% BSA, 0.02% Proclin300 and 50% Glycerol.
SUBCELLULAR LOCATION	Ubiquitous. Biallelically expressed in fetal and adult tissues. Highest levels in testis. Belongs to the nucleosome assembly protein (NAP) family.
SIMILARITY	Polyglutamylated by TTLL4, a modification that occurs exclusively on glutamate residues and results in polyglutamate chains on the gamma-carboxyl group. Some residues may also be monoglycylated but not polyglycylated due to the absence of functional TTLL10 in human.
Post-translational modifications	
Important Note	This product as supplied is intended for research use only, not for use in human, therapeutic or diagnostic applications.

Background Descriptions

This gene encodes a member of the nucleosome assembly protein (NAP) family which can interact with both core and linker histones. It can shuttle between the cytoplasm and nucleus, suggesting a role as a histone chaperone. This gene is one of several located near the imprinted gene domain of 11p15.5, an important tumor-suppressor gene region. Alterations in this region have been associated with the Beckwith-Wiedemann syndrome, Wilms tumor, rhabdomyosarcoma, adrenocortical carcinoma, and lung, ovarian, and breast cancer. [provided by RefSeq, Jul 2008]

NAP1L4 Polyclonal Antibody - Additional Information**Gene ID 4676**

Other Names

Nucleosome assembly protein 1-like 4, Nucleosome assembly protein 2, NAP-2, NAP1L4 ([HGNC:7640](http://www.genenames.org/cgi-bin/gene_symbol_report?hgnc_id=7640))

Dilution

IHC-P ~ N/A
IHC-F ~ N/A
IF ~ 1:50 ~ 200
ICC ~ N/A

Format

0.01M TBS(pH7.4), 0.09% (W/V) sodium azide and 50% Glyce

Storage

Store at -20 °C for one year. Avoid repeated freeze/thaw cycles. When reconstituted in sterile pH 7.4 0.01M PBS or diluent of antibody the antibody is stable for at least two weeks at 2-4 °C.

NAP1L4 Polyclonal Antibody - Protein Information

Name NAP1L4 ([HGNC:7640](#))

Function

Acts as a histone chaperone in nucleosome assembly.

Cellular Location

Nucleus. Cytoplasm. Note=Present in the cytoplasm and excluded from the nucleus during G0/G1 phase, then relocates to the nucleus by the time cells are in S phase (PubMed:9325046). Phosphorylated form localizes in the cytoplasm during the G0/G1 transition, whereas dephosphorylation leads to relocalization into the nucleus at the G1/S- boundary (PubMed:10764593).

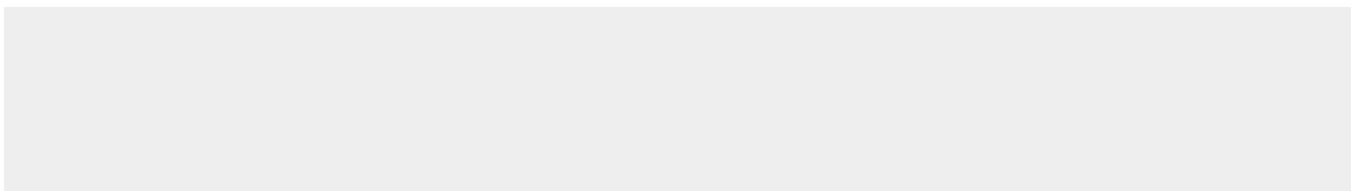
Tissue Location

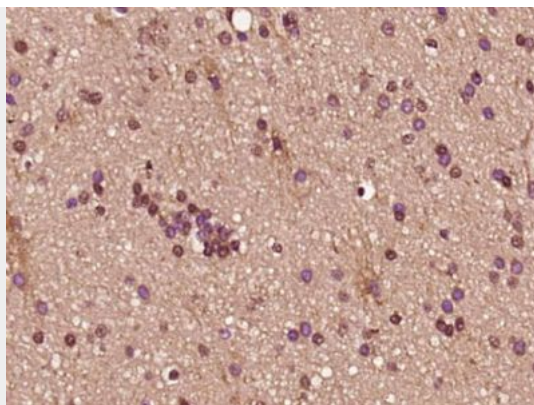
Ubiquitous. Biallelically expressed in fetal and adult tissues. Highest levels in testis.

NAP1L4 Polyclonal Antibody - Protocols

Provided below are standard protocols that you may find useful for product applications.

- [Western Blot](#)
- [Blocking Peptides](#)
- [Dot Blot](#)
- [Immunohistochemistry](#)
- [Immunofluorescence](#)
- [Immunoprecipitation](#)
- [Flow Cytometry](#)
- [Cell Culture](#)

NAP1L4 Polyclonal Antibody - Images



Paraformaldehyde-fixed, paraffin embedded (Human brain glioma); Antigen retrieval by boiling in sodium citrate buffer (pH6.0) for 15min; Block endogenous peroxidase by 3% hydrogen peroxide for 20 minutes; Blocking buffer (normal goat serum) at 37°C for 30min; Antibody incubation with (NAP1L4) Polyclonal Antibody, Unconjugated (bs-19011R) at 1:400 overnight at 4°C, followed by operating according to SP Kit(Rabbit) (sp-0023) instructions and DAB staining.