

EBPL Antibody (C-term)
Affinity Purified Rabbit Polyclonal Antibody (Pab)
Catalog # AP5735B**Specification**

EBPL Antibody (C-term) - Product Information

| | |
|-------------------|-----------------------------|
| Application | WB, IHC-P, FC,E |
| Primary Accession | Q9BY08 |
| Other Accession | NP_115954.1 |
| Reactivity | Human |
| Host | Rabbit |
| Clonality | Polyclonal |
| Isotype | Rabbit IgG |
| Calculated MW | 23204 |
| Antigen Region | 177-206 |

EBPL Antibody (C-term) - Additional Information**Gene ID** 84650**Other Names**

Emopamil-binding protein-like, Emopamil-binding-related protein, EBPL, EBRP, ERP

Target/Specificity

This EBPL antibody is generated from rabbits immunized with a KLH conjugated synthetic peptide between 177-206 amino acids from the C-terminal region of human EBPL.

Dilution

WB~~1:1000
IHC-P~~1:50~100
FC~~1:10~50

Format

Purified polyclonal antibody supplied in PBS with 0.09% (W/V) sodium azide. This antibody is purified through a protein A column, followed by peptide affinity purification.

Storage

Maintain refrigerated at 2-8°C for up to 2 weeks. For long term storage store at -20°C in small aliquots to prevent freeze-thaw cycles.

Precautions

EBPL Antibody (C-term) is for research use only and not for use in diagnostic or therapeutic procedures.

EBPL Antibody (C-term) - Protein Information**Name** EBPL

Synonyms EBRP, ERP

Function Does not possess sterol isomerase activity and does not bind sigma ligands.

Cellular Location

Endoplasmic reticulum membrane; Multi-pass membrane protein

Tissue Location

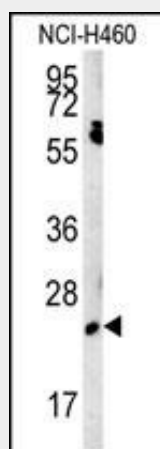
Widely expressed with highest levels in liver, lung and kidney.

EBPL Antibody (C-term) - Protocols

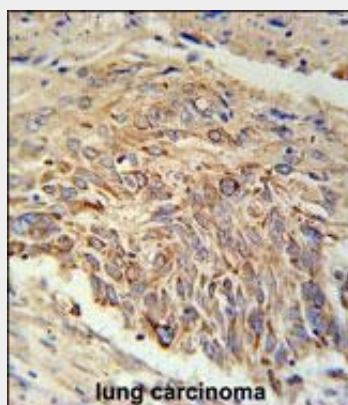
Provided below are standard protocols that you may find useful for product applications.

- [Western Blot](#)
- [Blocking Peptides](#)
- [Dot Blot](#)
- [Immunohistochemistry](#)
- [Immunofluorescence](#)
- [Immunoprecipitation](#)
- [Flow Cytometry](#)
- [Cell Culture](#)

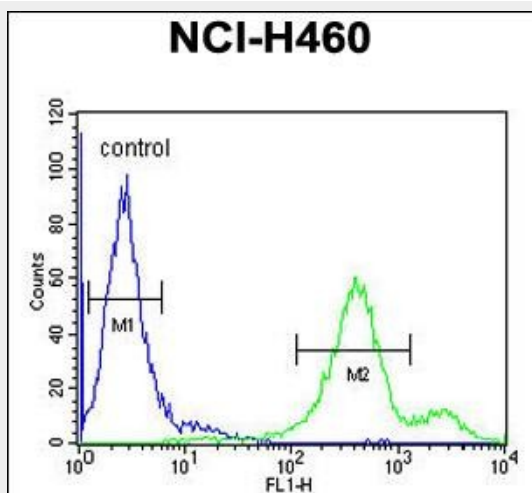
EBPL Antibody (C-term) - Images



EBPL Antibody (C-term) (Cat. #AP5735b) western blot analysis in NCI-H460 cell line lysates (15ug/lane). This demonstrates the EBPL antibody detected the EBPL protein (arrow).



EBPL Antibody (C-term) (Cat. #AP5735b) immunohistochemistry analysis in formalin fixed and paraffin embedded human lung carcinoma followed by peroxidase conjugation of the secondary antibody and DAB staining. This data demonstrates the use of the EBPL Antibody (C-term) for immunohistochemistry. Clinical relevance has not been evaluated.



EBPL Antibody (C-term) (Cat. #AP5735b) flow cytometric analysis of NCI-H460 cells (right histogram) compared to a negative control cell (left histogram). FITC-conjugated goat-anti-rabbit secondary antibodies were used for the analysis.

EBPL Antibody (C-term) - Background

EBPL does not possess sterol isomerase activity and does not bind sigma ligands.

EBPL Antibody (C-term) - References

Ma, J., et al. Atherosclerosis 191(1):63-72(2007)
 Moebius, F.F., et al. Biochem. J. 374 (PT 1), 229-237 (2003) :