

NDFIP2 Polyclonal Antibody
Purified Rabbit Polyclonal Antibody (Pab)
Catalog # AP57376**Specification**

NDFIP2 Polyclonal Antibody - Product Information

Application	WB, IHC-P, IHC-F, IF, ICC, E
Primary Accession	O9NV92
Reactivity	Rat, Pig, Dog, Bovine
Host	Rabbit
Clonality	Polyclonal
Calculated MW	36390

NDFIP2 Polyclonal Antibody - Additional Information**Gene ID** 54602**Other Names**

NEDD4 family-interacting protein 2, NEDD4 WW domain-binding protein 5A, Putative MAPK-activating protein PM04/PM05/PM06/PM07, Putative NF-kappa-B-activating protein 413, NDFIP2, KIAA1165, N4WBP5A

Dilution

WB~~1:1000<br \>IHC-P~~N/A<br \>IHC-F~~N/A<br \>IF~~1:50~200<br \>ICC~~N/A<br \>E~~N/A

Format

0.01M TBS(pH7.4), 0.09% (W/V) sodium azide and 50% Glyce

Storage

Store at -20 °C for one year. Avoid repeated freeze/thaw cycles. When reconstituted in sterile pH 7.4 0.01M PBS or diluent of antibody the antibody is stable for at least two weeks at 2-4 °C.

NDFIP2 Polyclonal Antibody - Protein Information**Name** NDFIP2**Synonyms** KIAA1165, N4WBP5A**Function**

Activates HECT domain-containing E3 ubiquitin-protein ligases, including ITCH, NEDD4, NEDD4L, SMURF2, WWP1 and WWP2, and consequently modulates the stability of their targets. As a result, may control many cellular processes. Recruits ITCH, NEDD4 and SMURF2 to endosomal membranes. Negatively regulates KCNH2 potassium channel activity by decreasing its cell-surface expression and interfering with channel maturation through recruitment of NEDD4L to the Golgi

apparatus and multivesicular body where it mediates KCNH2 degradation (PubMed:26363003). May modulate EGFR signaling. Together with NDFIP1, limits the cytokine signaling and expansion of effector Th2 T-cells by promoting degradation of JAK1, probably by ITCH- and NEDD4L-mediated ubiquitination (By similarity).

Cellular Location

Endosome membrane; Multi-pass membrane protein. Golgi apparatus membrane. Endosome, multivesicular body membrane

Tissue Location

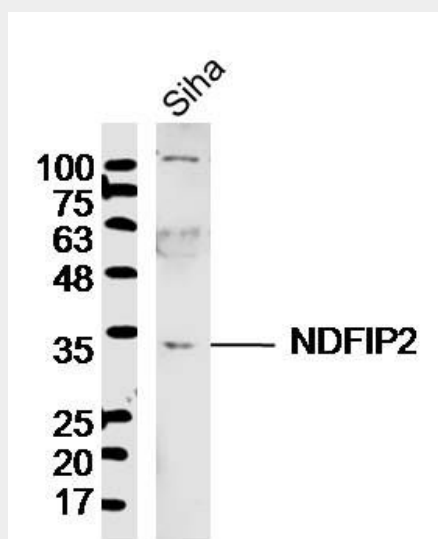
Expressed in brain, lung, heart, skeletal muscle, kidney, liver and placenta.

NDFIP2 Polyclonal Antibody - Protocols

Provided below are standard protocols that you may find useful for product applications.

- [Western Blot](#)
- [Blocking Peptides](#)
- [Dot Blot](#)
- [Immunohistochemistry](#)
- [Immunofluorescence](#)
- [Immunoprecipitation](#)
- [Flow Cytometry](#)
- [Cell Culture](#)

NDFIP2 Polyclonal Antibody - Images



Sample: Siha Cell (Human) Lysate at 40 ug
Primary: Anti- NDFIP2 (bs-19059R) at 1/300 dilution
Secondary: IRDye800CW Goat Anti-Rabbit IgG at 1/20000 dilution
Predicted band size: 36 kD
Observed band size: 34 kD