

MXRA8 Polyclonal Antibody
Purified Rabbit Polyclonal Antibody (Pab)
Catalog # AP57401**Specification****MXRA8 Polyclonal Antibody - Product Information**

Application	WB, IHC-P, IHC-F, IF, ICC, E
Primary Accession	Q9BRK3
Reactivity	Rat, Pig, Dog, Bovine
Host	Rabbit
Clonality	Polyclonal
Calculated MW	47 KDa
Physical State	Liquid
Immunogen	KLH conjugated synthetic peptide derived from human MXRA8
Epitope Specificity	181-280/442
Isotype	IgG
Purity	
affinity purified by Protein A	
Buffer	0.01M TBS (pH7.4) with 1% BSA, 0.02% Proclin300 and 50% Glycerol.
SUBCELLULAR LOCATION	Membrane.
SIMILARITY	Contains 2 Ig-like V-type (immunoglobulin-like) domains.
Important Note	This product as supplied is intended for research use only, not for use in human, therapeutic or diagnostic applications.

Background Descriptions

MXRA8 is a 442 amino acid single-pass type I membrane protein that is implicated in the maintenance and maturation of the blood-brain barrier. Containing two Ig-like V-type (immunoglobulin-like) domains, MXRA8 exists as two alternatively spliced isoforms that are encoded by a gene that maps to human chromosome 1p36.33. Human chromosome 1 spans 260 million base pairs, contains over 3,000 genes and comprises nearly 8% of the human genome. Chromosome 1 houses a large number of disease-associated genes, including those that are involved in familial adenomatous polyposis, Stickler syndrome, Parkinson's disease, Gaucher disease, schizophrenia and Usher syndrome. Aberrations in chromosome 1 are found in a variety of cancers, including head and neck cancer, malignant melanoma and multiple myeloma

MXRA8 Polyclonal Antibody - Additional Information**Gene ID** 54587**Other Names**

Matrix remodeling-associated protein 8, Limitrin, MXRA8

Dilution

WB~~1:1000<br \>IHC-P~~N/A<br \><span class

=["dilution_IHC-F">IHC-F~N/A](#)<br \><span class
=["dilution_IF">IF~1:50~200](#)<br \>ICC~N/A](#)<br
\>E~N/A](#)

Format

0.01M TBS(pH7.4), 0.09% (W/V) sodium azide and 50% Glyce

Storage

Store at -20 °C for one year. Avoid repeated freeze/thaw cycles. When reconstituted in sterile pH 7.4 0.01M PBS or diluent of antibody the antibody is stable for at least two weeks at 2-4 °C.

MXRA8 Polyclonal Antibody - Protein Information**Name** MXRA8**Function**

Transmembrane protein which can modulate activity of various signaling pathways, probably via binding to integrin ITGAV:ITGB3 (PubMed:22492581, PubMed:23386276). Mediates heterophilic cell-cell interactions in vitro (By similarity). Inhibits osteoclastogenesis downstream of TNFSF11/RANKL and CSF1, where it may function by attenuating signaling via integrin ITGB3 and MAP kinase p38 (By similarity). Plays a role in cartilage formation where it promotes proliferation and maturation of growth plate chondrocytes (By similarity). Stimulates formation of primary cilia in chondrocytes (By similarity). Enhances expression of genes involved in the hedgehog signaling pathway in chondrocytes, including the hedgehog signaling molecule IHH; may also promote signaling via the PTHLH/PTHrP pathway (By similarity). Plays a role in angiogenesis where it suppresses migration of endothelial cells and also promotes their apoptosis (PubMed:23386276). Inhibits VEGF-induced activation of AKT and p38 MAP kinase in endothelial cells (PubMed:23386276). Also inhibits VTN (vitronectin)-mediated integrin ITGAV:ITGB3 signaling and activation of PTK2/FAK (PubMed:23386276). May play a role in the maturation and maintenance of the blood-brain barrier (By similarity).

Cellular Location

Cell membrane; Single-pass type I membrane protein. Cell junction, tight junction {ECO:0000250|UniProtKB:Q9DBV4}. Cytoplasm {ECO:0000250|UniProtKB:Q9DBV4}. Cell projection, cilium membrane {ECO:0000250|UniProtKB:Q9DBV4}. Nucleus Note=Primarily localizes to the cell membrane (PubMed:23386276) Detected in the cilium of primary chondrocytes (By similarity). Highly expressed at areas of cell-cell contact and may localize to tight junctions (By similarity). Also found in the nucleus where it is detected in the soluble (as opposed to chromatin-bound) fraction (PubMed:23386276). {ECO:0000250|UniProtKB:Q9DBV4, ECO:0000269|PubMed:23386276}

Tissue Location

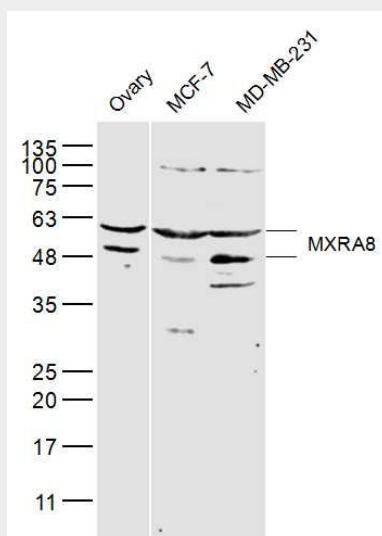
Detected in endothelial cells in mammary tissue, in both large vessels (left internal mammary artery) and small capillaries (vasa vasorum of the adventitia).

MXRA8 Polyclonal Antibody - Protocols

Provided below are standard protocols that you may find useful for product applications.

- [Western Blot](#)
- [Blocking Peptides](#)
- [Dot Blot](#)
- [Immunohistochemistry](#)
- [Immunofluorescence](#)
- [Immunoprecipitation](#)
- [Flow Cytometry](#)
- [Cell Culture](#)

MXRA8 Polyclonal Antibody - Images



Sample:

Ovary (Mouse) Lysate at 40 ug

MCF-7(Human) Cell Lysate at 30 ug

MD-MB-231(Human) Cell Lysate at 30 ug

Primary: Anti-MXRA8 (bs-19118R) at 1/300 dilution

Secondary: IRDye800CW Goat Anti-Rabbit IgG at 1/20000 dilution

Predicted band size: 47 kD

Observed band size: 47 kD