

Myeloid Marker Polyclonal Antibody
Purified Rabbit Polyclonal Antibody (Pab)
Catalog # AP57410**Specification****Myeloid Marker Polyclonal Antibody - Product Information**

Application	WB, IHC-P, IHC-F, IF, ICC, E
Primary Accession	Q96S97
Reactivity	Pig
Host	Rabbit
Clonality	Polyclonal
Calculated MW	36 KDa
Physical State	Liquid
Immunogen	KLH conjugated synthetic peptide derived from human Myeloid Marker
Epitope Specificity	51-150/322
Isotype	IgG
Purity	
affinity purified by Protein A	
Buffer	0.01M TBS (pH7.4) with 1% BSA, 0.02% Proclin300 and 50% Glycerol.
SUBCELLULAR LOCATION	Membrane.
SIMILARITY	Belongs to the MAL family. Contains 2 MARVEL domains.
Important Note	This product as supplied is intended for research use only, not for use in human, therapeutic or diagnostic applications.

Background Descriptions

Myeloid cells originate in the bone marrow during hematopoiesis and encompass all hemopoietic cells except the lymphoid cells (T cells, B cells, NK cells and dendritic cells). Vascular endothelial cells can differentiate from common myeloid progenitors, and these cells that form the bone marrow-derived myeloid lineage express markers such as CD31, von Willebrand factor and Tie2. Other myeloid markers may be used to track certain diseases, such as Kawasaki disease, a self-limited vasculitis that affects many organs, including the skin and mucous membranes, lymph nodes, blood vessel walls and heart.

Myeloid Marker Polyclonal Antibody - Additional Information**Gene ID** 91663**Other Names**

Myeloid-associated differentiation marker, Protein SB135, MYADM

Target/Specificity

Widely expressed. Not detected in thymus.

Dilution

WB~~1:1000<br \><span class

=IHC-P~~N/A<br \>IHC-F~~N/A<br \>IF~~1:50~200<br \>ICC~~N/A<br \>E~~N/A

Storage

Store at -20 °C for one year. Avoid repeated freeze/thaw cycles. When reconstituted in sterile pH 7.4 0.01M PBS or diluent of antibody the antibody is stable for at least two weeks at 2-4 °C.

Myeloid Marker Polyclonal Antibody - Protein Information

Name MYADM

Cellular Location

Membrane; Multi-pass membrane protein

Tissue Location

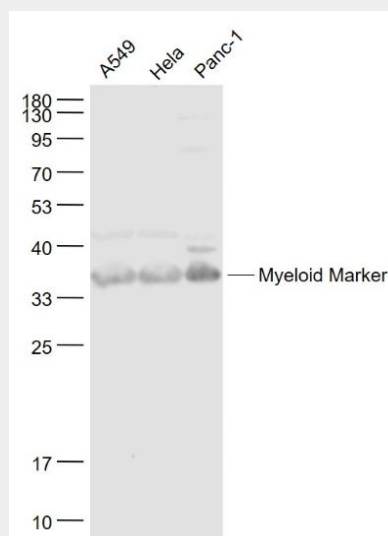
Widely expressed. Not detected in thymus.

Myeloid Marker Polyclonal Antibody - Protocols

Provided below are standard protocols that you may find useful for product applications.

- [Western Blot](#)
- [Blocking Peptides](#)
- [Dot Blot](#)
- [Immunohistochemistry](#)
- [Immunofluorescence](#)
- [Immunoprecipitation](#)
- [Flow Cytometry](#)
- [Cell Culture](#)

Myeloid Marker Polyclonal Antibody - Images



Sample:

A549(Human) Cell Lysate at 30 ug
Hela(Human) Cell Lysate at 30 ug
Panc-1(Human) Cell Lysate at 30 ug
Primary: Anti- Myeloid Marker (bs-19143R) at 1/300 dilution
Secondary: IRDye800CW Goat Anti-Rabbit IgG at 1/20000 dilution
Predicted band size: 36 kD
Observed band size: 36 kD