

**Prolyl Endopeptidase Polyclonal Antibody**  
**Purified Rabbit Polyclonal Antibody (Pab)**  
**Catalog # AP57432**

**Specification**

**Prolyl Endopeptidase Polyclonal Antibody - Product Information**

Application	WB, IHC-P, IHC-F, IF, ICC, E
Primary Accession	<a href="#">P48147</a>
Reactivity	Rat, Bovine
Host	Rabbit
Clonality	Polyclonal
Calculated MW	81 KDa
Physical State	Liquid
Immunogen	KLH conjugated synthetic peptide derived from human Prolyl Endopeptidase
Epitope Specificity	141-240/710
Isotype	IgG
<b>Purity</b>	
affinity purified by Protein A	
Buffer	0.01M TBS (pH7.4) with 1% BSA, 0.02% Proclin300 and 50% Glycerol.
SIMILARITY	Belongs to the peptidase S9A family.
Post-translational modifications	The N-terminus is blocked.
Important Note	This product as supplied is intended for research use only, not for use in human, therapeutic or diagnostic applications.

**Background Descriptions**

The protein encoded by this gene is a cytosolic prolyl endopeptidase that cleaves peptide bonds on the C-terminal side of prolyl residues within peptides that are up to approximately 30 amino acids long. Prolyl endopeptidases have been reported to be involved in the maturation and degradation of peptide hormones and neuropeptides. [provided by RefSeq, Jul 2008]

**Prolyl Endopeptidase Polyclonal Antibody - Additional Information**

**Gene ID** 5550

**Other Names**

Prolyl endopeptidase, PE, 3.4.21.26, Post-proline cleaving enzyme, PREP, PEP

**Target/Specificity**

Cytoplasm.

**Dilution**

<span class = "dilution\_WB">WB~~1:1000</span><br \><span class = "dilution\_IHC-P">IHC-P~~N/A</span><br \><span class = "dilution\_IHC-F">IHC-F~~N/A</span><br \><span class = "dilution\_IF">IF~~1:50~200</span><br \><span class = "dilution\_ICC">ICC~~N/A</span><br \><span class = "dilution\_E">E~~N/A</span>

**Format**

0.01M TBS(pH7.4), 0.09% (W/V) sodium azide and 50% Glyce

**Storage**

Store at -20 °C for one year. Avoid repeated freeze/thaw cycles. When reconstituted in sterile pH 7.4 0.01M PBS or diluent of antibody the antibody is stable for at least two weeks at 2-4 °C.

**Prolyl Endopeptidase Polyclonal Antibody - Protein Information**

**Name** PREP

**Synonyms** PEP

**Function**

Cleaves peptide bonds on the C-terminal side of prolyl residues within peptides that are up to approximately 30 amino acids long.

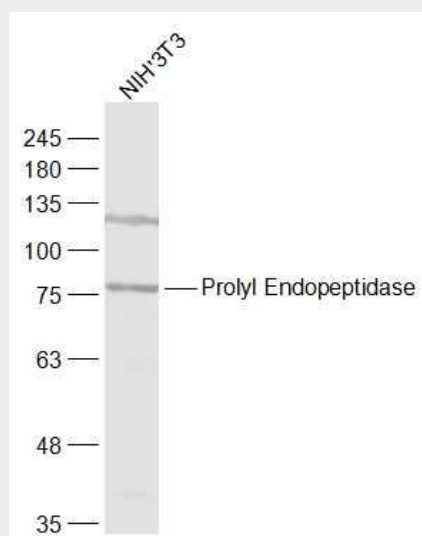
**Cellular Location**

Cytoplasm.

**Prolyl Endopeptidase Polyclonal Antibody - Protocols**

Provided below are standard protocols that you may find useful for product applications.

- [Western Blot](#)
- [Blocking Peptides](#)
- [Dot Blot](#)
- [Immunohistochemistry](#)
- [Immunofluorescence](#)
- [Immunoprecipitation](#)
- [Flow Cytometry](#)
- [Cell Culture](#)

**Prolyl Endopeptidase Polyclonal Antibody - Images**

Sample:

NIH/3T3(Mouse) Cell Lysate at 30 ug

Primary: Anti-Prolyl Endopeptidase (bs-19182R) at 1/1000 dilution

Secondary: IRDye800CW Goat Anti-Rabbit IgG at 1/20000 dilution

Predicted band size: 81 kD

Observed band size: 81 kD