

RNF208 Antibody (Center)
Affinity Purified Rabbit Polyclonal Antibody (Pab)
Catalog # AP5743c**Specification**

RNF208 Antibody (Center) - Product Information

Application	WB, IHC-P, FC,E
Primary Accession	O9H0X6
Other Accession	NP_112587.2
Reactivity	Human
Host	Rabbit
Clonality	Polyclonal
Isotype	Rabbit IgG
Antigen Region	86-115

RNF208 Antibody (Center) - Additional Information**Gene ID** 727800**Other Names**

RING finger protein 208, RNF208

Target/Specificity

This RNF208 antibody is generated from rabbits immunized with a KLH conjugated synthetic peptide between 86-115 amino acids from the Central region of human RNF208.

Dilution

WB~~1:1000
IHC-P~~1:50~100
FC~~1:10~50

Format

Purified polyclonal antibody supplied in PBS with 0.09% (W/V) sodium azide. This antibody is purified through a protein A column, followed by peptide affinity purification.

Storage

Maintain refrigerated at 2-8°C for up to 2 weeks. For long term storage store at -20°C in small aliquots to prevent freeze-thaw cycles.

Precautions

RNF208 Antibody (Center) is for research use only and not for use in diagnostic or therapeutic procedures.

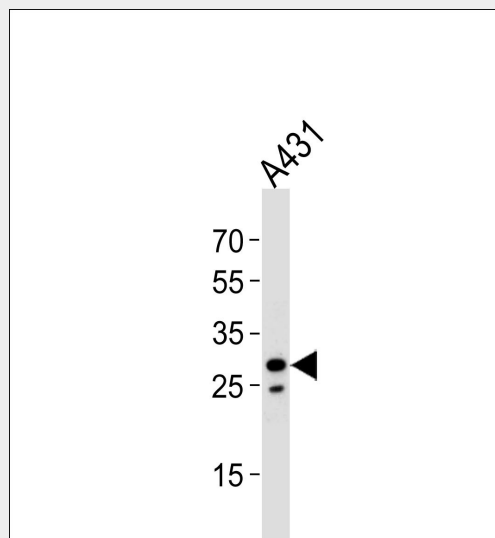
RNF208 Antibody (Center) - Protein Information**Name** RNF208

RNF208 Antibody (Center) - Protocols

Provided below are standard protocols that you may find useful for product applications.

- [Western Blot](#)
- [Blocking Peptides](#)
- [Dot Blot](#)
- [Immunohistochemistry](#)
- [Immunofluorescence](#)
- [Immunoprecipitation](#)
- [Flow Cytometry](#)
- [Cell Culture](#)

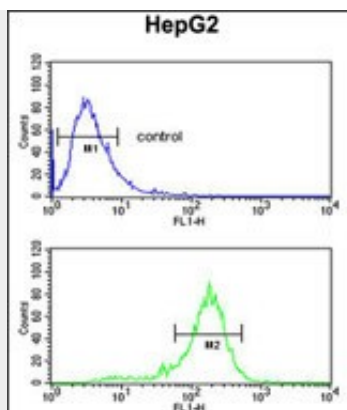
RNF208 Antibody (Center) - Images



Western blot analysis of lysate from A431 cell line, using RNF208 Antibody (Center)(Cat. #AP5743c). AP5743c was diluted at 1:1000 at each lane. A goat anti-rabbit IgG H&L(HRP) at 1:5000 dilution was used as the secondary antibody. Lysate at 35ug per lane.



RNF208 Antibody (Center) (Cat. #AP5743c) immunohistochemistry analysis in formalin fixed and paraffin embedded human brain tissue followed by peroxidase conjugation of the secondary antibody and DAB staining. This data demonstrates the use of the RNF208 Antibody (Center) for immunohistochemistry. Clinical relevance has not been evaluated.



RNF208 Antibody (Center) (Cat. #AP5743c) flow cytometric analysis of HepG2 cells (bottom histogram) compared to a negative control cell (top histogram). FITC-conjugated goat-anti-rabbit secondary antibodies were used for the analysis.

RNF208 Antibody (Center) - References

Simpson, J.C., et al. EMBO Rep. 1(3):287-292(2000)