

LYSMD1 Antibody (C-term)
Affinity Purified Rabbit Polyclonal Antibody (Pab)
Catalog # AP5745B**Specification**

LYSMD1 Antibody (C-term) - Product Information

Application	WB, IHC-P,E
Primary Accession	O96S90
Other Accession	O9N012 , A0JN11 , NP_997716.1
Reactivity	Human, Mouse
Predicted	Bovine, Monkey
Host	Rabbit
Clonality	Polyclonal
Isotype	Rabbit IgG
Calculated MW	25003
Antigen Region	198-227

LYSMD1 Antibody (C-term) - Additional Information**Gene ID** 388695**Other Names**

LysM and putative peptidoglycan-binding domain-containing protein 1, LYSMD1

Target/Specificity

This LYSMD1 antibody is generated from rabbits immunized with a KLH conjugated synthetic peptide between 198-227 amino acids from the C-terminal region of human LYSMD1.

Dilution

WB~~1:1000

IHC-P~~1:50~100

Format

Purified polyclonal antibody supplied in PBS with 0.09% (W/V) sodium azide. This antibody is purified through a protein A column, followed by peptide affinity purification.

Storage

Maintain refrigerated at 2-8°C for up to 2 weeks. For long term storage store at -20°C in small aliquots to prevent freeze-thaw cycles.

Precautions

LYSMD1 Antibody (C-term) is for research use only and not for use in diagnostic or therapeutic procedures.

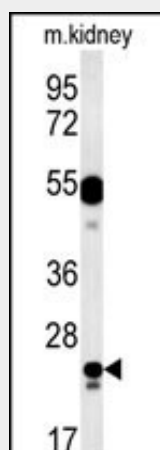
LYSMD1 Antibody (C-term) - Protein Information**Name** LYSMD1

LYSMD1 Antibody (C-term) - Protocols

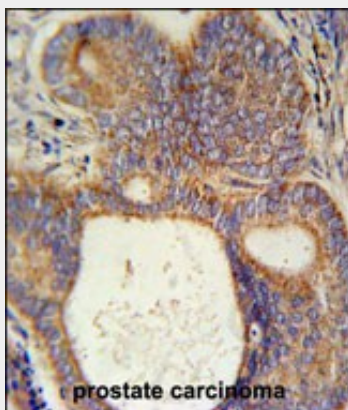
Provided below are standard protocols that you may find useful for product applications.

- [Western Blot](#)
- [Blocking Peptides](#)
- [Dot Blot](#)
- [Immunohistochemistry](#)
- [Immunofluorescence](#)
- [Immunoprecipitation](#)
- [Flow Cytometry](#)
- [Cell Culture](#)

LYSMD1 Antibody (C-term) - Images



LYSMD1 Antibody (C-term) (Cat. #AP5745b) western blot analysis in mouse kidney tissue lysates (15ug/lane). This demonstrates the LYSMD1 antibody detected LYSMD1 protein (arrow).



LYSMD1 Antibody (C-term) (Cat. #AP5745b) immunohistochemistry analysis in formalin fixed and paraffin embedded human prostate carcinoma followed by peroxidase conjugation of the secondary antibody and DAB staining. This data demonstrates the use of the LYSMD1 Antibody (C-term) for immunohistochemistry. Clinical relevance has not been evaluated.

LYSMD1 Antibody (C-term) - Background

The specific function of this protein remains unknown but it may be involved in the chemical reactions and pathways resulting in the breakdown of macromolecules that form part of a cell wall.

LYSMD1 Antibody (C-term) - References

Sugiyama, N., et al. Mol. Cell Proteomics 6(6):1103-1109(2007)
Gregory, S.G., et al. Nature 441(7091):315-321(2006)