

NLRC5 Polyclonal Antibody

Purified Rabbit Polyclonal Antibody (Pab)

Catalog # AP57462

Specification

NLRC5 Polyclonal Antibody - Product Information

| | |
|--------------------------------|---|
| Application | IHC-P, IHC-F, IF, ICC, E |
| Primary Accession | Q86WI3 |
| Host | Rabbit |
| Clonality | Polyclonal |
| Calculated MW | 204 KDa |
| Physical State | Liquid |
| Immunogen | KLH conjugated synthetic peptide derived from human NLRC5 |
| Epitope Specificity | 651-750/1866 |
| Isotype | IgG |
| Purity | |
| affinity purified by Protein A | |
| Buffer | 0.01M TBS (pH7.4) with 1% BSA, 0.02% Proclin300 and 50% Glycerol. |
| SUBCELLULAR LOCATION | Cytoplasm. |
| SIMILARITY | Belongs to the NLRP family. Contains 26 LRR (leucine-rich) repeats. Contains 1 NACHT domain. |
| Important Note | This product as supplied is intended for research use only, not for use in human, therapeutic or diagnostic applications. |

Background Descriptions

This gene encodes a member of the caspase recruitment domain-containing NLR family. This gene plays a role in cytokine response and antiviral immunity through its inhibition of NF-kappa-B activation and negative regulation of type I interferon signaling pathways. [provided by RefSeq, Oct 2011]

NLRC5 Polyclonal Antibody - Additional Information

Gene ID 84166

Other Names

Protein NLRC5, Caterpillar protein 16.1, CLR16.1, Nucleotide-binding oligomerization domain protein 27, Nucleotide-binding oligomerization domain protein 4, NLRC5, NOD27, NOD4

Target/Specificity

Expressed in spleen, thymus, lung, brain, tonsil, heart and prostate.

Dilution

IHC-P ~ ~ N/A
IHC-F ~ ~ N/A
IF ~ ~ 1:50 ~ 200
ICC ~ ~ N/A

\>E~~N/A

Format

0.01M TBS(pH7.4), 0.09% (W/V) sodium azide and 50% Glyce

Storage

Store at -20 °C for one year. Avoid repeated freeze/thaw cycles. When reconstituted in sterile pH 7.4 0.01M PBS or diluent of antibody the antibody is stable for at least two weeks at 2-4 °C.

NLRC5 Polyclonal Antibody - Protein Information

Name NLRC5

Synonyms NOD27, NOD4

Function

Probable regulator of the NF-kappa-B and type I interferon signaling pathways. May also regulate the type II interferon signaling pathway. Plays a role in homeostatic control of innate immunity and in antiviral defense mechanisms.

Cellular Location

Cytoplasm

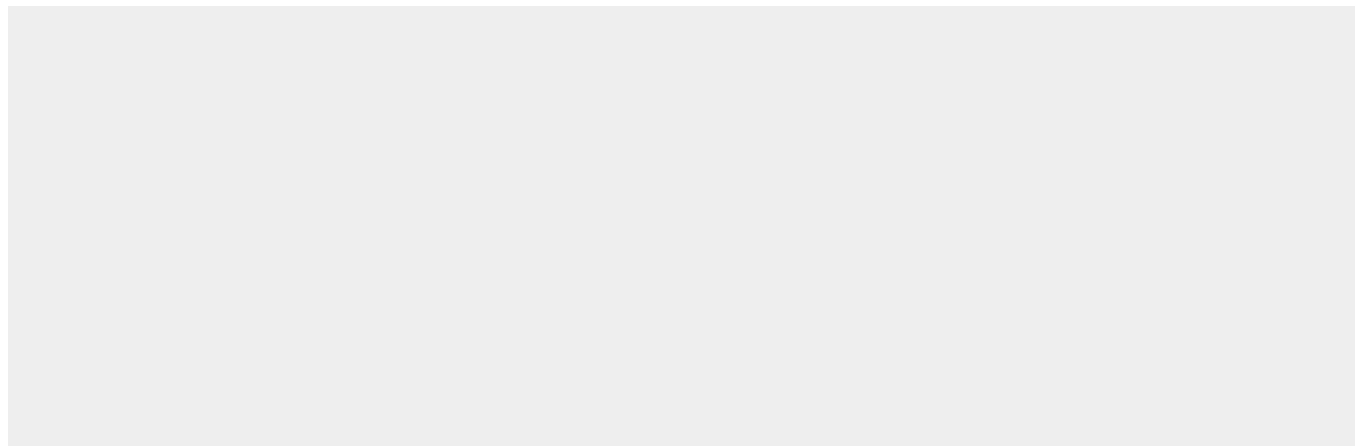
Tissue Location

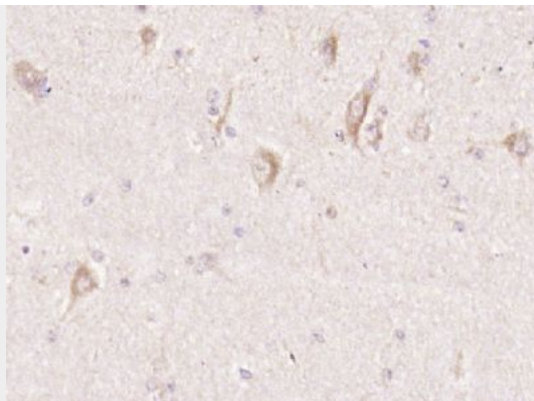
Expressed in spleen, thymus, lung, brain, tonsil, heart and prostate.

NLRC5 Polyclonal Antibody - Protocols

Provided below are standard protocols that you may find useful for product applications.

- [Western Blot](#)
- [Blocking Peptides](#)
- [Dot Blot](#)
- [Immunohistochemistry](#)
- [Immunofluorescence](#)
- [Immunoprecipitation](#)
- [Flow Cytometry](#)
- [Cell Culture](#)

NLRC5 Polyclonal Antibody - Images



Paraformaldehyde-fixed, paraffin embedded (Human brain glioma); Antigen retrieval by boiling in sodium citrate buffer (pH6.0) for 15min; Block endogenous peroxidase by 3% hydrogen peroxide for 20 minutes; Blocking buffer (normal goat serum) at 37°C for 30min; Antibody incubation with (NLRC5) Polyclonal Antibody, Unconjugated (bs-19284R) at 1:400 overnight at 4°C, followed by operating according to SP Kit(Rabbit) (sp-0023) instructions and DAB staining.