

**NPEPL1 Polyclonal Antibody**  
**Purified Rabbit Polyclonal Antibody (Pab)**  
**Catalog # AP57476****Specification**

---

**NPEPL1 Polyclonal Antibody - Product Information**

Application	WB, IHC-P, IHC-F, IF, ICC, E
Primary Accession	<a href="#">Q9HAU8</a>
Reactivity	Rat, Dog, Bovine
Host	Rabbit
Clonality	Polyclonal
Calculated MW	55 KDa
Physical State	Liquid
Immunogen	KLH conjugated synthetic peptide derived from human NPEPL1
Epitope Specificity	371-470/494
Isotype	IgG
<b>Purity</b>	
affinity purified by Protein A	
Buffer	0.01M TBS (pH7.4) with 1% BSA, 0.02% Proclin300 and 50% Glycerol.
SIMILARITY	Belongs to the peptidase M17 family.
Important Note	This product as supplied is intended for research use only, not for use in human, therapeutic or diagnostic applications.

**Background Descriptions**

Aminopeptidases are widely distributed in eukaryotes and prokaryotes. These enzymes catalyze the removal of amino acids from the N-termini of proteins or peptide substrates. Aminopeptidases are involved in regulating hormone levels and are essential for digestive and intracellular protein metabolism. NPEPL1, also referred to as aminopeptidase-like 1, is a 523 amino acid protein that belongs to the peptidase M17 family and is ubiquitously expressed. NPEPL1 may be involved in the processing, catabolism and degradation of intracellular proteins by catalyzing the removal of unsubstituted N-terminal amino acids from various peptides. NPEPL1 contains several zinc binding sites and is expressed as three isoforms due to alternative splicing events.

**NPEPL1 Polyclonal Antibody - Additional Information****Gene ID** 57140**Other Names**

Aminopeptidase RNPEPL1, 3.4.11.-, Arginyl aminopeptidase-like 1  
{ECO:0000312|HGNC:HGNC:10079}, Methionyl aminopeptidase, 3.4.11.18, RNPEPL1  
{ECO:0000303|PubMed:11017071, ECO:0000312|HGNC:HGNC:10079}

**Target/Specificity**

Ubiquitously expressed.

**Dilution**

<span class = "dilution\_WB">WB~~1:1000</span><br \><span class = "dilution\_IHC-P">IHC-P~~N/A</span><br \><span class = "dilution\_IHC-F">IHC-F~~N/A</span><br \><span class = "dilution\_IF">IF~~1:50~200</span><br \><span class = "dilution\_ICC">ICC~~N/A</span><br \><span class = "dilution\_E">E~~N/A</span>

**Format**

0.01M TBS(pH7.4), 0.09% (W/V) sodium azide and 50% Glyce

**Storage**

Store at -20 °C for one year. Avoid repeated freeze/thaw cycles. When reconstituted in sterile pH 7.4 0.01M PBS or diluent of antibody the antibody is stable for at least two weeks at 2-4 °C.

**NPEPL1 Polyclonal Antibody - Protein Information**

**Name** RNPEPL1 {ECO:0000303|PubMed:11017071, ECO:0000312|HGNC:HGNC:10079}

**Function**

Broad specificity aminopeptidase which preferentially hydrolyzes an N-terminal methionine, citrulline or glutamine.

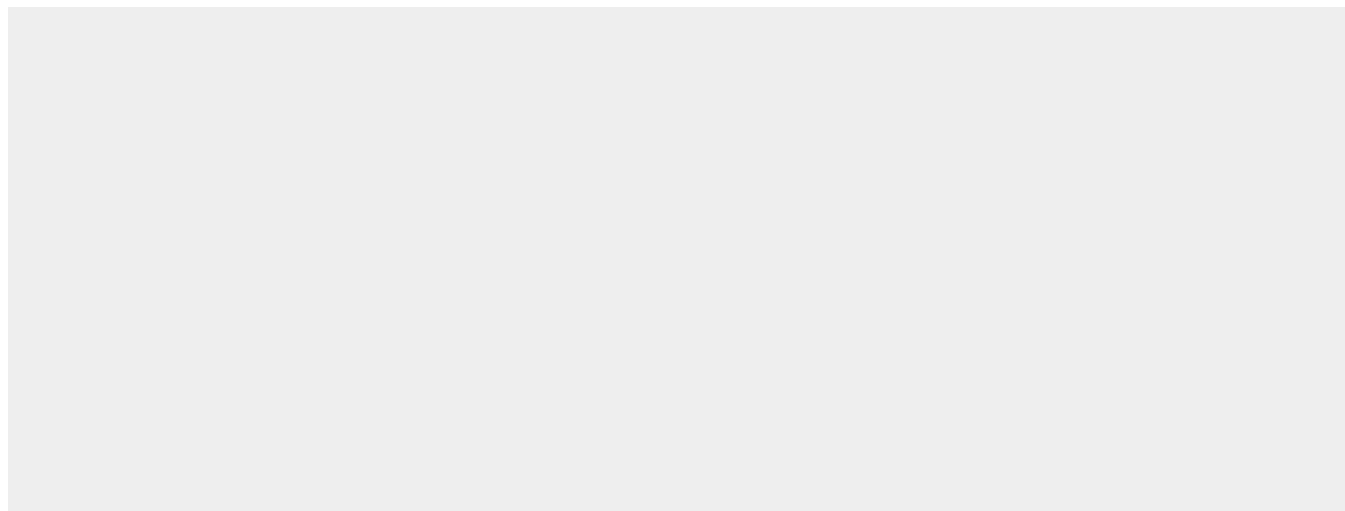
**Tissue Location**

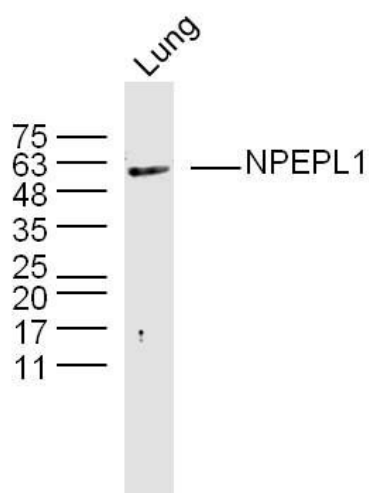
Ubiquitously expressed. Expressed at relatively higher levels in heart and skeletal muscle

**NPEPL1 Polyclonal Antibody - Protocols**

Provided below are standard protocols that you may find useful for product applications.

- [Western Blot](#)
- [Blocking Peptides](#)
- [Dot Blot](#)
- [Immunohistochemistry](#)
- [Immunofluorescence](#)
- [Immunoprecipitation](#)
- [Flow Cytometry](#)
- [Cell Culture](#)

**NPEPL1 Polyclonal Antibody - Images**



Sample: lung (mouse) Lysate at 40 ug  
Primary: Anti-NPEPL1(bs-19327R) at 1/300 dilution  
Secondary: IRDye800CW Goat Anti-Rabbit IgG at 1/20000 dilution  
Predicted band size: 55 kD  
Observed band size: 55 kD