

Nucleoplasmin 3 Polyclonal Antibody
Purified Rabbit Polyclonal Antibody (Pab)
Catalog # AP57479

Specification

Nucleoplasmin 3 Polyclonal Antibody - Product Information

Application	IHC-P, IHC-F, IF, ICC, E
Primary Accession	O75607
Reactivity	Rat, Dog, Bovine
Host	Rabbit
Clonality	Polyclonal
Calculated MW	19 KDa
Physical State	Liquid
Immunogen	KLH conjugated synthetic peptide derived from human Nucleoplasmin 3
Epitope Specificity	2-100/178
Isotype	IgG
Purity	
affinity purified by Protein A	
Buffer	0.01M TBS (pH7.4) with 1% BSA, 0.02% Proclin300 and 50% Glycerol.
SUBCELLULAR LOCATION	Nucleus.
SIMILARITY	Belongs to the nucleoplasmin family.
Post-translational modifications	Phosphorylated.
Important Note	This product as supplied is intended for research use only, not for use in human, therapeutic or diagnostic applications.

Background Descriptions

The protein encoded by this gene is related to the nuclear chaperone phosphoproteins, nucleoplasmin and nucleophosmin. This protein is strongly expressed in diverse cell types where it localizes primarily to the nucleus. Based on its similarity to nucleoplasmin and nucleophosmin, this protein likely functions as a molecular chaperone in the cell nucleus. [provided by RefSeq, Oct 2008]

Nucleoplasmin 3 Polyclonal Antibody - Additional Information

Gene ID 10360

Other Names

Nucleoplasmin-3, NPM3

Target/Specificity

Ubiquitous.

Dilution

IHC-P ~ ~ N/A
IHC-F ~ ~ N/A
IF ~ ~ 1:50 ~ 200
ICC ~ ~ N/A

\>E~~N/A

Storage

Store at -20 °C for one year. Avoid repeated freeze/thaw cycles. When reconstituted in sterile pH 7.4 0.01M PBS or diluent of antibody the antibody is stable for at least two weeks at 2-4 °C.

Nucleoplasmin 3 Polyclonal Antibody - Protein Information

Name NPM3

Function

Plays a role in the regulation of diverse cellular processes such as ribosome biogenesis, chromatin remodeling or protein chaperoning (PubMed:20073534, PubMed:22362753). Modulates the histone chaperone function and the RNA-binding activity of nucleolar phosphoprotein B23/NPM (PubMed:22362753). Efficiently mediates chromatin remodeling when included in a pentamer containing NPM3 and NPM (PubMed:15596447).

Cellular Location

Nucleus. Nucleus, nucleolus Note=Mainly found in the granular component of the nucleolus

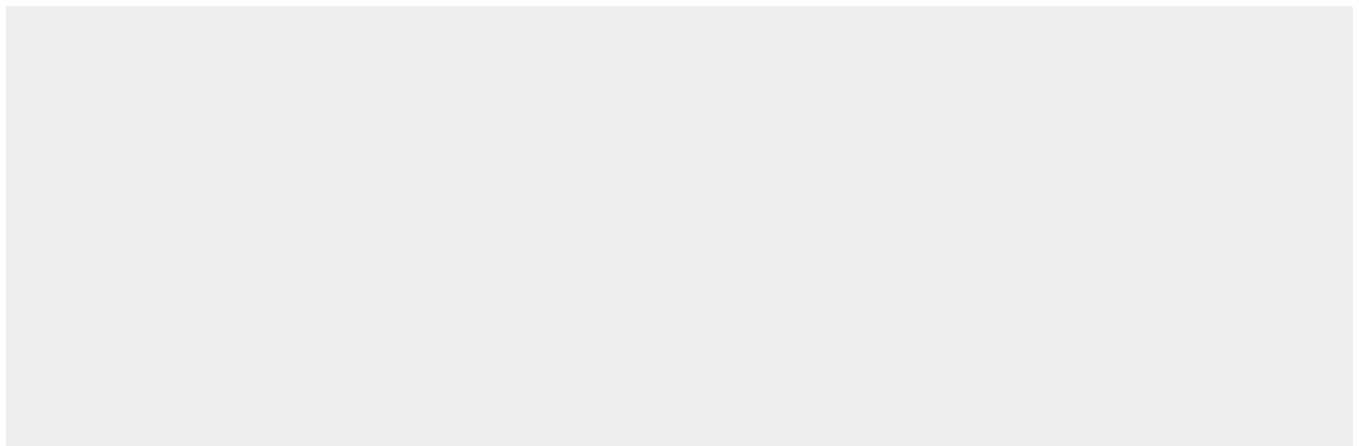
Tissue Location

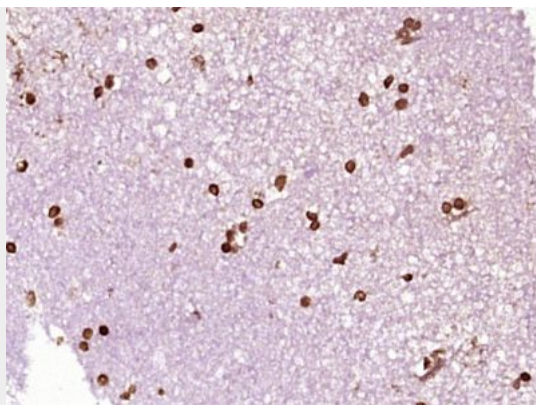
Ubiquitous..

Nucleoplasmin 3 Polyclonal Antibody - Protocols

Provided below are standard protocols that you may find useful for product applications.

- [Western Blot](#)
- [Blocking Peptides](#)
- [Dot Blot](#)
- [Immunohistochemistry](#)
- [Immunofluorescence](#)
- [Immunoprecipitation](#)
- [Flow Cytometry](#)
- [Cell Culture](#)

Nucleoplasmin 3 Polyclonal Antibody - Images



Paraformaldehyde-fixed, paraffin embedded (human brain glioma); Antigen retrieval by boiling in sodium citrate buffer (pH6.0) for 15min; Block endogenous peroxidase by 3% hydrogen peroxide for 20 minutes; Blocking buffer (normal goat serum) at 37°C for 30min; Antibody incubation with (Nucleoplasmin 3) Polyclonal Antibody, Unconjugated (bs-19336R) at 1:400 overnight at 4°C, followed by operating according to SP Kit(Rabbit) (sp-0023) instructions and DAB staining.