

Sarcalumenin Polyclonal Antibody
Purified Rabbit Polyclonal Antibody (Pab)
Catalog # AP57502**Specification****Sarcalumenin Polyclonal Antibody - Product Information**

Application	WB, IHC-P, IHC-F, IF, ICC, E
Primary Accession	Q86TD4
Host	Rabbit
Clonality	Polyclonal
Calculated MW	54 KDa
Physical State	Liquid
Immunogen	KLH conjugated synthetic peptide derived from human Sarcalumenin,Isoform 2
Epitope Specificity	451-550/932
Isotype	IgG
Purity	
affinity purified by Protein A	
Buffer	0.01M TBS (pH7.4) with 1% BSA, 0.02% Proclin300 and 50% Glycerol.
SUBCELLULAR LOCATION	Sarcoplasmic reticulum lumen. Associated through calcium with the membrane.
SIMILARITY	Belongs to the TRAFAC class dynamin-like GTPase superfamily. Dynamin/Fzo/YdjA family. {ECO:0000305}. Contains 1 dynamin-type G (guanine nucleotide-binding) domain.
Important Note	This product as supplied is intended for research use only, not for use in human, therapeutic or diagnostic applications.

Sarcalumenin Polyclonal Antibody - Additional Information**Gene ID** 6345**Other Names**

Sarcalumenin, SRL

Dilution

WB~~1:1000<br \>IHC-P~~N/A<br \>IHC-F~~N/A<br \>IF~~1:50~200<br \>ICC~~N/A<br \>E~~N/A

Format

0.01M TBS(pH7.4), 0.09% (W/V) sodium azide and 50% Glyce

Storage

Store at -20 °C for one year. Avoid repeated freeze/thaw cycles. When reconstituted in sterile pH 7.4 0.01M PBS or diluent of antibody the antibody is stable for at least two weeks at 2-4 °C.

Sarcalumenin Polyclonal Antibody - Protein Information

Name SRL

Cellular Location

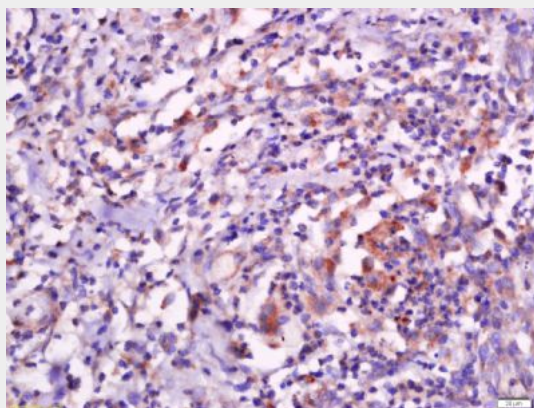
Sarcoplasmic reticulum lumen {ECO:0000250|UniProtKB:P13666}. Sarcoplasmic reticulum membrane {ECO:0000250|UniProtKB:P13666}; Peripheral membrane protein {ECO:0000250|UniProtKB:P13666}. Note=May associate with the sarcoplasmic reticulum membrane, via a calcium-dependent mechanism {ECO:0000250|UniProtKB:P13666}

Sarcalumenin Polyclonal Antibody - Protocols

Provided below are standard protocols that you may find useful for product applications.

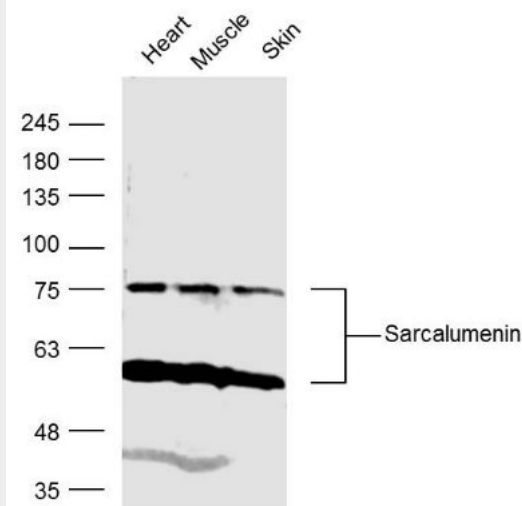
- [Western Blot](#)
- [Blocking Peptides](#)
- [Dot Blot](#)
- [Immunohistochemistry](#)
- [Immunofluorescence](#)
- [Immunoprecipitation](#)
- [Flow Cytometry](#)
- [Cell Culture](#)

Sarcalumenin Polyclonal Antibody - Images



Tissue/cell: human esophageal carcinoma; 4% Paraformaldehyde-fixed and paraffin-embedded;
Antigen retrieval: citrate buffer (0.01M, pH 6.0), Boiling bathing for 15min; Block endogenous peroxidase by 3% Hydrogen peroxide for 30min; Blocking buffer (normal goat serum,C-0005) at 37°C for 20 min;

Incubation: Anti-Sarcalumenin Polyclonal Antibody, Unconjugated(bs-19394R) 1:500, overnight at 4°C, followed by conjugation to the secondary antibody(SP-0023) and DAB(C-0010) staining



Sample:

Heart (Mouse) Lysate at 40 ug

Muscle (Mouse) Lysate at 40 ug

Skin (Mouse) Lysate at 40 ug

Primary: Anti- Sarcalumenin (bs-19394R) at 1/300 dilution

Secondary: IRDye800CW Goat Anti-Rabbit IgG at 1/20000 dilution

Predicted band size: 97kD

Observed band size: 75 kD