

FOXC2 Antibody (Center S174)
Affinity Purified Rabbit Polyclonal Antibody (Pab)
Catalog # AP5750c

Specification

FOXC2 Antibody (Center S174) - Product Information

Application	FC, IHC-P, WB,E
Primary Accession	O99958
Other Accession	NP_005242
Reactivity	Human
Host	Rabbit
Clonality	Polyclonal
Isotype	Rabbit IgG
Calculated MW	53719
Antigen Region	159-186

FOXC2 Antibody (Center S174) - Additional Information

Gene ID 2303

Other Names

Forkhead box protein C2, Forkhead-related protein FKHL14, Mesenchyme fork head protein 1, MFH-1 protein, Transcription factor FKH-14, FOXC2, FKHL14, MFH1

Target/Specificity

This FOXC2 antibody is generated from rabbits immunized with a KLH conjugated synthetic peptide between 159-186 amino acids from the Central region of human FOXC2.

Dilution

FC~~1:10~50

IHC-P~~1:50~100

WB~~1:1000

E~~Use at an assay dependent concentration.

Format

Purified polyclonal antibody supplied in PBS with 0.09% (W/V) sodium azide. This antibody is purified through a protein A column, followed by peptide affinity purification.

Storage

Maintain refrigerated at 2-8°C for up to 2 weeks. For long term storage store at -20°C in small aliquots to prevent freeze-thaw cycles.

Precautions

FOXC2 Antibody (Center S174) is for research use only and not for use in diagnostic or therapeutic procedures.

FOXC2 Antibody (Center S174) - Protein Information

Name FOXC2

Synonyms FKHL14, MFH1

Function Transcriptional activator.

Cellular Location

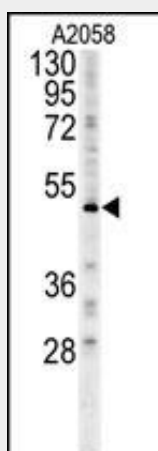
Nucleus {ECO:0000255|PROSITE-ProRule:PRU00089, ECO:0000269|PubMed:23878394, ECO:0000269|PubMed:28179430}

FOXC2 Antibody (Center S174) - Protocols

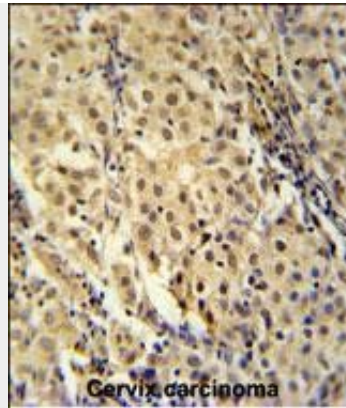
Provided below are standard protocols that you may find useful for product applications.

- [Western Blot](#)
- [Blocking Peptides](#)
- [Dot Blot](#)
- [Immunohistochemistry](#)
- [Immunofluorescence](#)
- [Immunoprecipitation](#)
- [Flow Cytometry](#)
- [Cell Culture](#)

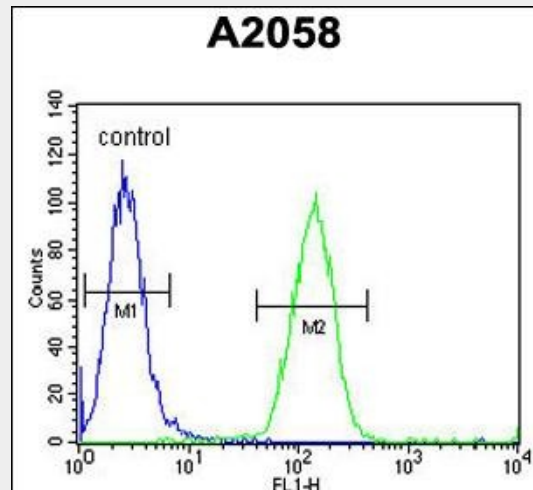
FOXC2 Antibody (Center S174) - Images



FOXC2 Antibody (Center S174) (Cat. #AP5750c) western blot analysis in A2058 cell line lysates (15ug/lane). This demonstrates the FOXC2 antibody detected the FOXC2 protein (arrow).



FOXC2 Antibody (Center S174) (Cat. #AP5750c) immunohistochemistry analysis in formalin fixed and paraffin embedded human cervix carcinoma followed by peroxidase conjugation of the secondary antibody and DAB staining. This data demonstrates the use of the FOXC2 Antibody (Center S174) for immunohistochemistry. Clinical relevance has not been evaluated.



FOXC2 Antibody (Center S174) (Cat. #AP5750c) flow cytometric analysis of A2058 cells (right histogram) compared to a negative control cell (left histogram). FITC-conjugated goat-anti-rabbit secondary antibodies were used for the analysis.

FOXC2 Antibody (Center S174) - Background

FOXC2 belongs to the forkhead family of transcription factors which is characterized by a distinct DNA-binding forkhead domain. The specific function of this gene has not yet been determined; however, it may play a role in the development of mesenchymal tissues.

FOXC2 Antibody (Center S174) - References

- van Dongen, M.J., et al. J. Mol. Biol. 296(2):351-359(2000)
- Mangion, J., et al. Am. J. Hum. Genet. 65(2):427-432(1999)
- Miura, N., et al. Genomics 41(3):489-492(1997)
- Kaestner, K.H., et al. Development 122(6):1751-1758(1996)