

Nucleobindin 1 Polyclonal Antibody
Purified Rabbit Polyclonal Antibody (Pab)
Catalog # AP57550**Specification**

Nucleobindin 1 Polyclonal Antibody - Product Information

Application	WB, IHC-P
Primary Accession	Q02818
Reactivity	Rat, Pig, Dog, Bovine
Host	Rabbit
Clonality	Polyclonal
Calculated MW	53879

Nucleobindin 1 Polyclonal Antibody - Additional Information**Gene ID** 4924**Other Names**

Nucleobindin-1, CALNUC, NUCB1, NUC

Format

0.01M TBS(pH7.4), 0.09% (W/V) sodium azide and 50% Glyce

Storage

Store at -20 °C for one year. Avoid repeated freeze/thaw cycles. When reconstituted in sterile pH 7.4 0.01M PBS or diluent of antibody the antibody is stable for at least two weeks at 2-4 °C.

Nucleobindin 1 Polyclonal Antibody - Protein Information**Name** NUCB1**Synonyms** NUC**Function**

Major calcium-binding protein of the Golgi which may have a role in calcium homeostasis (By similarity). Acts as a non-receptor guanine nucleotide exchange factor which binds to and activates alpha subunits of guanine nucleotide-binding proteins (G proteins) (By similarity).

Cellular Location

Golgi apparatus, cis-Golgi network membrane {ECO:0000250|UniProtKB:Q63083}; Peripheral membrane protein {ECO:0000250|UniProtKB:Q63083}; Lumenal side {ECO:0000250|UniProtKB:Q63083}. Cytoplasm {ECO:0000250|UniProtKB:Q63083}. Secreted {ECO:0000250|UniProtKB:Q63083}. Note=A small fraction of the protein may be cytoplasmic. {ECO:0000250|UniProtKB:Q63083}

Tissue Location

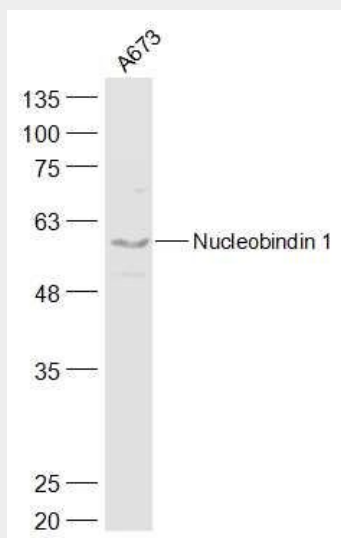
Expressed both in fetal and adult heart, lung, liver, kidney and brain, and in adult skeletal muscle, placenta and pancreas

Nucleobindin 1 Polyclonal Antibody - Protocols

Provided below are standard protocols that you may find useful for product applications.

- [Western Blot](#)
- [Blocking Peptides](#)
- [Dot Blot](#)
- [Immunohistochemistry](#)
- [Immunofluorescence](#)
- [Immunoprecipitation](#)
- [Flow Cytometry](#)
- [Cell Culture](#)

Nucleobindin 1 Polyclonal Antibody - Images



Sample:

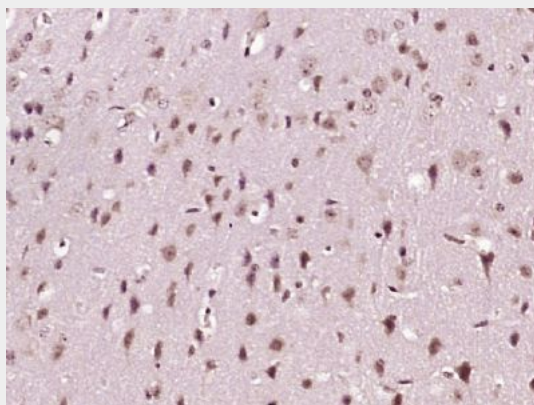
A673(Human) Cell Lysate at 30 ug

Primary: Anti-alpha smooth muscle Actin (bs-19500R) at 1/500 dilution

Secondary: IRDye800CW Goat Anti-Rabbit IgG at 1/20000 dilution

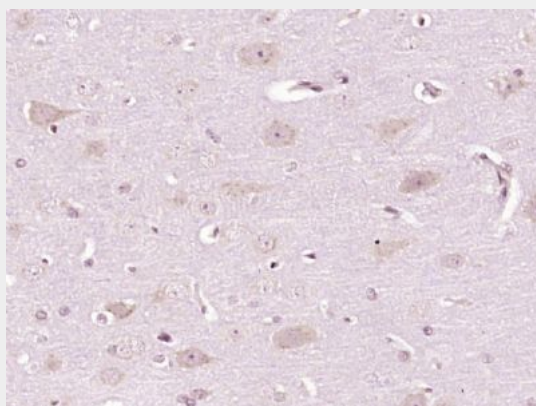
Predicted band size: 54 kD

Observed band size: 54 kD



Paraformaldehyde-fixed, paraffin embedded (mouse brain tissue); Antigen retrieval by boiling in

sodium citrate buffer (pH6.0) for 15min; Block endogenous peroxidase by 3% hydrogen peroxide for 20 minutes; Blocking buffer (normal goat serum) at 37°C for 30min; Antibody incubation with (Nucleobindin 1) Polyclonal Antibody, Unconjugated (bs-19500R) at 1:400 overnight at 4°C, followed by operating according to SP Kit(Rabbit) (sp-0023) instructions and DAB staining.



Paraformaldehyde-fixed, paraffin embedded (rat brain tissue); Antigen retrieval by boiling in sodium citrate buffer (pH6.0) for 15min; Block endogenous peroxidase by 3% hydrogen peroxide for 20 minutes; Blocking buffer (normal goat serum) at 37°C for 30min; Antibody incubation with (Nucleobindin 1) Polyclonal Antibody, Unconjugated (bs-19500R) at 1:400 overnight at 4°C, followed by operating according to SP Kit(Rabbit) (sp-0023) instructions and DAB staining.