

**SYN3 Antibody (Center)**  
**Affinity Purified Rabbit Polyclonal Antibody (Pab)**  
**Catalog # AP5755c**

**Specification**

---

**SYN3 Antibody (Center) - Product Information**

Application	WB, IHC-P,E
Primary Accession	<a href="#">O14994</a>
Other Accession	<a href="#">NP_003481.3</a>
Reactivity	Human
Host	Rabbit
Clonality	Polyclonal
Isotype	Rabbit IgG
Calculated MW	63303
Antigen Region	363-388

**SYN3 Antibody (Center) - Additional Information**

**Gene ID** 8224

**Other Names**

Synapsin-3, Synapsin III, SYN3

**Target/Specificity**

This SYN3 antibody is generated from rabbits immunized with a KLH conjugated synthetic peptide between 363-388 amino acids from the Central region of human SYN3.

**Dilution**

WB~~1:1000

IHC-P~~1:50~100

**Format**

Purified polyclonal antibody supplied in PBS with 0.09% (W/V) sodium azide. This antibody is purified through a protein A column, followed by peptide affinity purification.

**Storage**

Maintain refrigerated at 2-8°C for up to 2 weeks. For long term storage store at -20°C in small aliquots to prevent freeze-thaw cycles.

**Precautions**

SYN3 Antibody (Center) is for research use only and not for use in diagnostic or therapeutic procedures.

**SYN3 Antibody (Center) - Protein Information**

**Name** SYN3

**Function** May be involved in the regulation of neurotransmitter release and synaptogenesis.

**Cellular Location**

Cytoplasmic vesicle, secretory vesicle, synaptic vesicle membrane; Peripheral membrane protein; Cytoplasmic side Note=Peripheral membrane protein localized to the cytoplasmic surface of synaptic vesicles

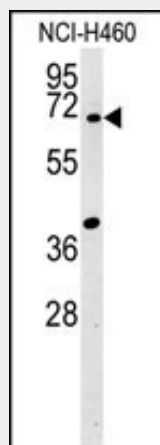
**Tissue Location**

Neuron specific. Detected predominantly in brain.

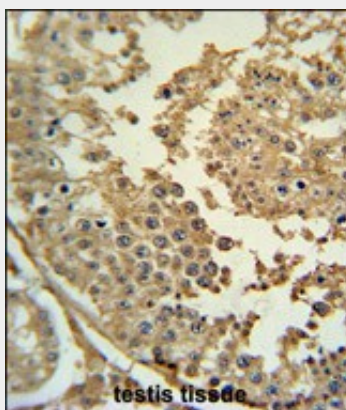
**SYN3 Antibody (Center) - Protocols**

Provided below are standard protocols that you may find useful for product applications.

- [Western Blot](#)
- [Blocking Peptides](#)
- [Dot Blot](#)
- [Immunohistochemistry](#)
- [Immunofluorescence](#)
- [Immunoprecipitation](#)
- [Flow Cytometry](#)
- [Cell Culture](#)

**SYN3 Antibody (Center) - Images**

SYN3 Antibody (Center) (Cat. #AP5755c) western blot analysis in NCI-H460 cell line lysates (15ug/lane). This demonstrates the SYN3 antibody detected the SYN3 protein (arrow).



SYN3 Antibody (Center) (Cat. #AP5755c) immunohistochemistry analysis in formalin fixed and

paraffin embedded human testis tissue followed by peroxidase conjugation of the secondary antibody and DAB staining. This data demonstrates the use of the SYN3 Antibody (Center) for immunohistochemistry. Clinical relevance has not been evaluated.

### **SYN3 Antibody (Center) - Background**

This gene is a member of the synapsin gene family. Synapsins encode neuronal phosphoproteins which associate with the cytoplasmic surface of synaptic vesicles. Family members are characterized by common protein domains, and they are implicated in synaptogenesis and the modulation of neurotransmitter release, suggesting a potential role in several neuropsychiatric diseases. The protein encoded by this gene shares the synapsin family domain model, with domains A, C, and E exhibiting the highest degree of conservation. The protein contains a unique domain J, located between domains C and E. Based on this gene's localization to 22q12.3, a possible schizophrenia susceptibility locus, and the established neurobiological roles of the synapsins, this family member may represent a candidate gene for schizophrenia. The TIMP3 gene is located within an intron of this gene and is transcribed in the opposite direction.

### **SYN3 Antibody (Center) - References**

Tsai, M.T., et al. Am. J. Med. Genet. 114(1):79-83(2002)  
Kao, H.T., et al. J. Exp. Zool. 285(4):360-377(1999)  
Porton, B., et al. J. Neurochem. 73(6):2266-2271(1999)  
Kao, H.T., et al. Proc. Natl. Acad. Sci. U.S.A. 95(8):4667-4672(1998)