

PSMG1 Polyclonal Antibody
Purified Rabbit Polyclonal Antibody (Pab)
Catalog # AP57582

Specification

PSMG1 Polyclonal Antibody - Product Information

Application	WB, IHC-P, IHC-F, IF, ICC, E
Primary Accession	O95456
Host	Rabbit
Clonality	Polyclonal
Calculated MW	32854

PSMG1 Polyclonal Antibody - Additional Information

Gene ID 8624

Other Names

Proteasome assembly chaperone 1, PAC-1, Chromosome 21 leucine-rich protein, C21-LRP, Down syndrome critical region protein 2, PSMG1, C21LRP, DSCR2, PAC1

Dilution

WB~~1:1000<br \>IHC-P~~N/A<br \>IHC-F~~N/A<br \>IF~~1:50~200<br \>ICC~~N/A<br \>E~~N/A

Format

0.01M TBS(pH7.4), 0.09% (W/V) sodium azide and 50% Glyce

Storage

Store at -20 °C for one year. Avoid repeated freeze/thaw cycles. When reconstituted in sterile pH 7.4 0.01M PBS or diluent of antibody the antibody is stable for at least two weeks at 2-4 °C.

PSMG1 Polyclonal Antibody - Protein Information

Name PSMG1 ([HGNC:3043](#))

Synonyms C21LRP, DSCR2, PAC1

Function

Chaperone protein which promotes assembly of the 20S proteasome as part of a heterodimer with PSMG2. The PSMG1-PSMG2 heterodimer binds to the PSMA5 and PSMA7 proteasome subunits, promotes assembly of the proteasome alpha subunits into the heteroheptameric alpha ring and prevents alpha ring dimerization.

Cellular Location

Cytoplasm. Endoplasmic reticulum.

Tissue Location

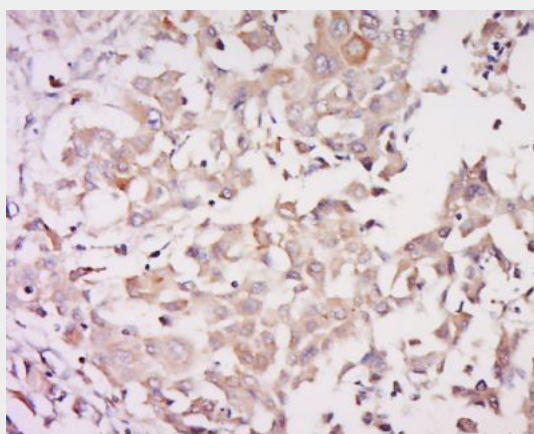
In the adult, detected in brain, colon, leukocytes, breast and testis. Widely expressed in the fetus. Also expressed in a variety of proliferating cell lines.

PSMG1 Polyclonal Antibody - Protocols

Provided below are standard protocols that you may find useful for product applications.

- [Western Blot](#)
- [Blocking Peptides](#)
- [Dot Blot](#)
- [Immunohistochemistry](#)
- [Immunofluorescence](#)
- [Immunoprecipitation](#)
- [Flow Cytometry](#)
- [Cell Culture](#)

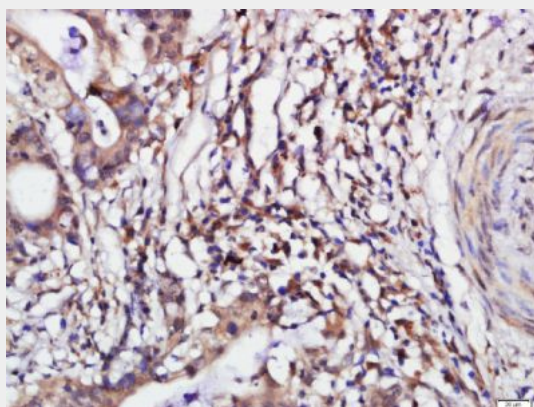
PSMG1 Polyclonal Antibody - Images



Tissue/cell: human breast carcinoma; 4% Paraformaldehyde-fixed and paraffin-embedded;

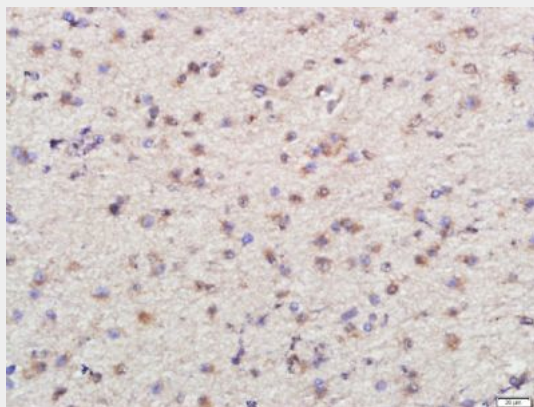
Antigen retrieval: citrate buffer (0.01M, pH 6.0), Boiling bathing for 15min; Block endogenous peroxidase by 3% Hydrogen peroxide for 30min; Blocking buffer (normal goat serum,C-0005) at 37°C for 20 min;

Incubation: Anti-PSMG1 Polyclonal Antibody, Unconjugated(bs-19577R) 1:500, overnight at 4°C, followed by conjugation to the secondary antibody(SP-0023) and DAB(C-0010) staining



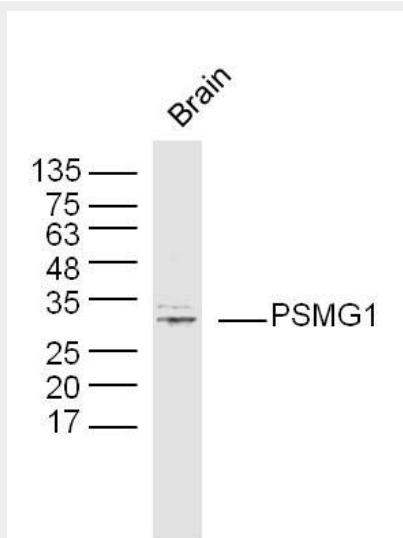
Tissue/cell: human cervix carcinoma; 4% Paraformaldehyde-fixed and paraffin-embedded;
Antigen retrieval: citrate buffer (0.01M, pH 6.0), Boiling bathing for 15min; Block endogenous peroxidase by 3% Hydrogen peroxide for 30min; Blocking buffer (normal goat serum,C-0005) at 37n for 20 min;

Incubation: Anti-PSMG1 Polyclonal Antibody, Unconjugated(bs-19577R) 1:200, overnight at 4ΣC, followed by conjugation to the secondary antibody(SP-0023) and DAB(C-0010) staining



Tissue/cell: human brain glioma; 4% Paraformaldehyde-fixed and paraffin-embedded;
Antigen retrieval: citrate buffer (0.01M, pH 6.0), Boiling bathing for 15min; Block endogenous peroxidase by 3% Hydrogen peroxide for 30min; Blocking buffer (normal goat serum,C-0005) at 37n for 20 min;

Incubation: Anti-PSMG1 Polyclonal Antibody, Unconjugated(bs-19577R) 1:200, overnight at 4ΣC, followed by conjugation to the secondary antibody(SP-0023) and DAB(C-0010) staining



Protein: brain(mouse) lysate at 40ug;
Primary: rabbit Anti-PSME1 (bs-19575R) at 1:300;
Secondary: IRDye800CW Goat Anti-Rabbit IgG at 1/20000 dilution
Predicted band size: 29 kD
Observed band size: 29 kD