

**SEPHS1 Polyclonal Antibody**  
**Purified Rabbit Polyclonal Antibody (Pab)**  
**Catalog # AP57603****Specification**

---

**SEPHS1 Polyclonal Antibody - Product Information**

Application	WB
Primary Accession	<a href="#">P49903</a>
Reactivity	Rat, Pig, Dog, Bovine
Host	Rabbit
Clonality	Polyclonal
Calculated MW	42911

**SEPHS1 Polyclonal Antibody - Additional Information****Gene ID** 22929**Other Names**

Selenide, water dikinase 1, 2.7.9.3, Selenium donor protein 1, Selenophosphate synthase 1, SEPHS1, SELD, SPS, SPS1

**Format**

0.01M TBS(pH7.4), 0.09% (W/V) sodium azide and 50% Glyce

**Storage**

Store at -20 °C for one year. Avoid repeated freeze/thaw cycles. When reconstituted in sterile pH 7.4 0.01M PBS or diluent of antibody the antibody is stable for at least two weeks at 2-4 °C.

**SEPHS1 Polyclonal Antibody - Protein Information****Name** SEPHS1**Synonyms** SELD, SPS, SPS1**Function**

Synthesizes selenophosphate from selenide and ATP.

**Cellular Location**

[Isoform 1]: Cell membrane; Peripheral membrane protein. Nucleus membrane; Peripheral membrane protein [Isoform 3]: Cytoplasm

**Tissue Location**

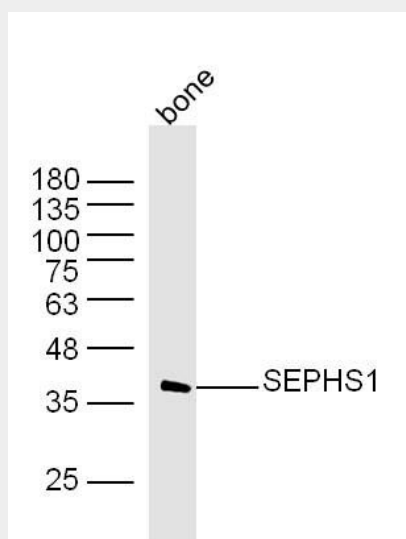
[Isoform 1]: Gradually expressed during the cell cycle until G2/M phase and then decreases  
[Isoform 3]: Gradually expressed during the cell cycle until S phase and then decreases.

**SEPHS1 Polyclonal Antibody - Protocols**

Provided below are standard protocols that you may find useful for product applications.

- [Western Blot](#)
- [Blocking Peptides](#)
- [Dot Blot](#)
- [Immunohistochemistry](#)
- [Immunofluorescence](#)
- [Immunoprecipitation](#)
- [Flow Cytometry](#)
- [Cell Culture](#)

#### **SEPHS1 Polyclonal Antibody - Images**



Protein: bone(mouse) lysate at 40ug;  
Primary: rabbit Anti-SEPHS1(bs-19627R) at 1:300;  
Secondary: IRDye800CW Goat Anti-Rabbit IgG at 1/20000 dilution  
Predicted band size: 43 kD  
Observed band size: 36 kD