

SERGEF Polyclonal Antibody
Purified Rabbit Polyclonal Antibody (Pab)
Catalog # AP57608**Specification**

SERGEF Polyclonal Antibody - Product Information

Application	WB, IHC-P, IHC-F, IF, ICC, E
Primary Accession	O9UGK8
Reactivity	Rat
Host	Rabbit
Clonality	Polyclonal
Calculated MW	48981

SERGEF Polyclonal Antibody - Additional Information**Gene ID** 26297**Other Names**

Secretion-regulating guanine nucleotide exchange factor, Deafness locus-associated putative guanine nucleotide exchange factor, DelGEF, Guanine nucleotide exchange factor-related protein, SERGEF, DELGEF, GNEFR

Dilution

WB~1:1000<br \>IHC-P~N/A<br \>IHC-F~N/A<br \>IF~1:50~200<br \>ICC~N/A<br \>E~N/A

Format

0.01M TBS(pH7.4), 0.09% (W/V) sodium azide and 50% Glyce

Storage

Store at -20 °C for one year. Avoid repeated freeze/thaw cycles. When reconstituted in sterile pH 7.4 0.01M PBS or diluent of antibody the antibody is stable for at least two weeks at 2-4 °C.

SERGEF Polyclonal Antibody - Protein Information**Name** SERGEF**Synonyms** DELGEF, GNEFR**Function**

Probable guanine nucleotide exchange factor (GEF), which may be involved in the secretion process.

Cellular Location

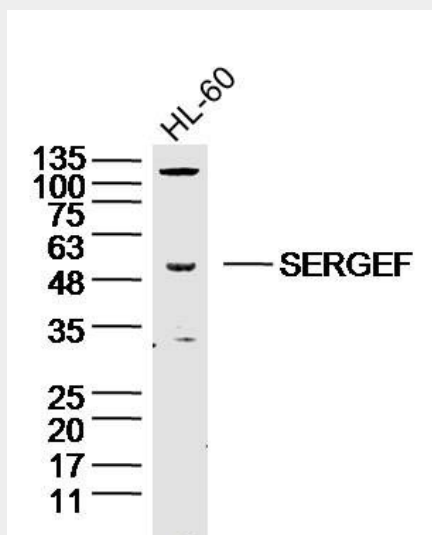
Cytoplasm. Nucleus

SERGEF Polyclonal Antibody - Protocols

Provided below are standard protocols that you may find useful for product applications.

- [Western Blot](#)
- [Blocking Peptides](#)
- [Dot Blot](#)
- [Immunohistochemistry](#)
- [Immunofluorescence](#)
- [Immunoprecipitation](#)
- [Flow Cytometry](#)
- [Cell Culture](#)

SERGEF Polyclonal Antibody - Images



Sample: HL-60 Cell (Human) Lysate at 40 ug
Primary: Anti-SERGEF(bs-19655R) at 1/300 dilution
Secondary: IRDye800CW Goat Anti-Rabbit IgG at 1/20000 dilution
Predicted band size: 50kD
Observed band size: 50kD