

**RAI14 Polyclonal Antibody**  
**Purified Rabbit Polyclonal Antibody (Pab)**  
**Catalog # AP57641****Specification**

---

**RAI14 Polyclonal Antibody - Product Information**

Application	IHC-P, WB
Primary Accession	<a href="#">Q9P0K7</a>
Host	Rabbit
Clonality	Polyclonal
Calculated MW	110041

**RAI14 Polyclonal Antibody - Additional Information****Gene ID** 26064**Other Names**

Ankycorbin, Ankyrin repeat and coiled-coil structure-containing protein, Novel retinal pigment epithelial cell protein, Retinoic acid-induced protein 14, RAI14, KIAA1334, NORPEG

**Format**

0.01M TBS(pH7.4), 0.09% (W/V) sodium azide and 50% Glyce

**Storage**

Store at -20 °C for one year. Avoid repeated freeze/thaw cycles. When reconstituted in sterile pH 7.4 0.01M PBS or diluent of antibody the antibody is stable for at least two weeks at 2-4 °C.

**RAI14 Polyclonal Antibody - Protein Information****Name** RAI14**Synonyms** KIAA1334, NORPEG**Function**

Plays a role in actin regulation at the ectoplasmic specialization, a type of cell junction specific to testis. Important for establishment of sperm polarity and normal spermatid adhesion. May also promote integrity of Sertoli cell tight junctions at the blood- testis barrier.

**Cellular Location**

Cytoplasm, cytoskeleton. Cytoplasm, cytoskeleton, stress fiber {ECO:0000250|UniProtKB:Q9EP71}. Cytoplasm, cell cortex {ECO:0000250|UniProtKB:Q5U312}. Cell junction {ECO:0000250|UniProtKB:Q5U312}. Nucleus Note=Associated with the cortical actin cytoskeleton structures in terminal web and cell-cell adhesion sites (By similarity). Highly expressed at the ectoplasmic specialization, an actin-rich cell junction specific to the testis (By similarity). Predominantly nuclear in nonconfluent cells (PubMed:16729964). {ECO:0000250|UniProtKB:Q5U312, ECO:0000269|PubMed:16729964}

**Tissue Location**

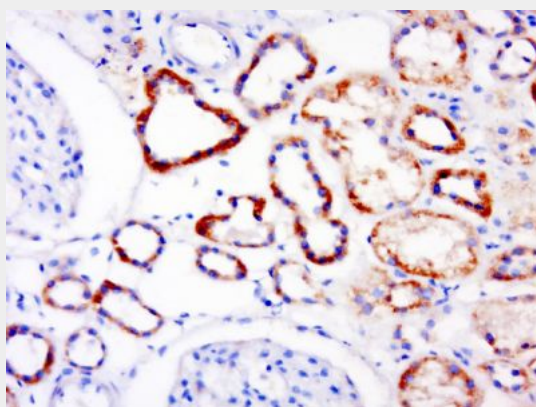
Highly expressed in placenta, muscle, kidney and testis. Moderately expressed in heart, brain, lung, liver and intestine. Isoform 2 is widely expressed and expressed in fetal and adult testes, and spermatozoa.

### **RAI14 Polyclonal Antibody - Protocols**

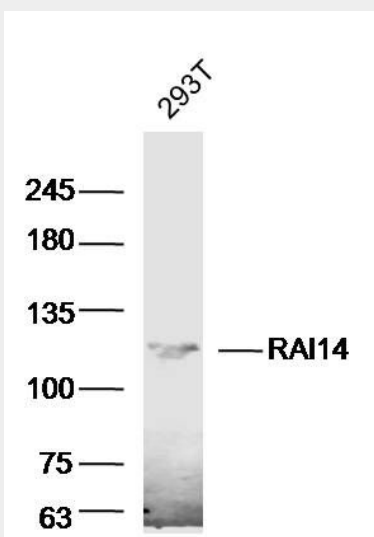
Provided below are standard protocols that you may find useful for product applications.

- [Western Blot](#)
- [Blocking Peptides](#)
- [Dot Blot](#)
- [Immunohistochemistry](#)
- [Immunofluorescence](#)
- [Immunoprecipitation](#)
- [Flow Cytometry](#)
- [Cell Culture](#)

### **RAI14 Polyclonal Antibody - Images**



Paraformaldehyde-fixed, paraffin embedded (human kidney); Antigen retrieval by boiling in sodium citrate buffer (pH6.0) for 15min; Block endogenous peroxidase by 3% hydrogen peroxide for 20 minutes; Blocking buffer (normal goat serum) at 37°C for 30min; Antibody incubation with (RAI14) Polyclonal Antibody, Unconjugated (bs-19728R) at 1:500 overnight at 4°C, followed by a conjugated secondary (sp-0023) for 20 minutes and DAB staining.



Sample: 293T Cell (Human) Lysate at 30 ug  
Primary: Anti-RAI14 (bs-19728R) at 1/300 dilution  
Secondary: IRDye800CW Goat Anti-Rabbit IgG at 1/20000 dilution  
Predicted band size: 110kD  
Observed band size: 120kD