

RBMS1/Cervical cancer oncogene 4 Polyclonal Antibody
Purified Rabbit Polyclonal Antibody (Pab)
Catalog # AP57658**Specification**

RBMS1/Cervical cancer oncogene 4 Polyclonal Antibody - Product Information

Application	WB
Primary Accession	P29558
Reactivity	Rat, Pig, Dog, Bovine
Host	Rabbit
Clonality	Polyclonal
Calculated MW	44505

RBMS1/Cervical cancer oncogene 4 Polyclonal Antibody - Additional Information**Gene ID** 5937**Other Names**

RNA-binding motif, single-stranded-interacting protein 1, Single-stranded DNA-binding protein
MSSP-1, Suppressor of CDC2 with RNA-binding motif 2, RBMS1, C2orf12, MSSP, MSSP1, SCR2

Format

0.01M TBS(pH7.4), 0.09% (W/V) sodium azide and 50% Glyce

Storage

Store at -20 °C for one year. Avoid repeated freeze/thaw cycles. When reconstituted in sterile pH 7.4 0.01M PBS or diluent of antibody the antibody is stable for at least two weeks at 2-4 °C.

RBMS1/Cervical cancer oncogene 4 Polyclonal Antibody - Protein Information**Name** RBMS1**Synonyms** C2orf12, MSSP, MSSP1, SCR2**Function**

Single-stranded DNA binding protein that interacts with the region upstream of the MYC gene. Binds specifically to the DNA sequence motif 5'-[AT]CT[AT][AT]T-3'. Probably has a role in DNA replication.

Cellular Location

Nucleus.

Tissue Location

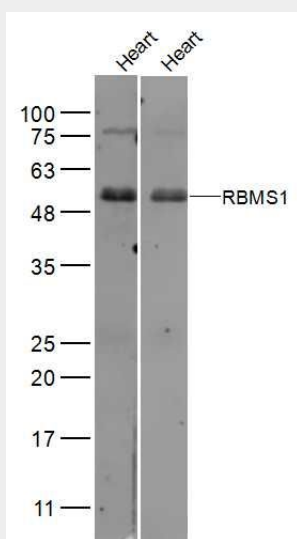
Highest amounts are found in placenta, lung and heart

RBMS1/Cervical cancer oncogene 4 Polyclonal Antibody - Protocols

Provided below are standard protocols that you may find useful for product applications.

- [Western Blot](#)
- [Blocking Peptides](#)
- [Dot Blot](#)
- [Immunohistochemistry](#)
- [Immunofluorescence](#)
- [Immunoprecipitation](#)
- [Flow Cytometry](#)
- [Cell Culture](#)

RBMS1/Cervical cancer oncogene 4 Polyclonal Antibody - Images



Sample:

Heart (Mouse) Lysate at 40 ug

Heart (Mouse) Lysate at 40 ug

Primary: Anti-RBMS1 (bs-19776R) at 1/500 dilution

Anti-RBMS1 (bs-19776R) at 1/20000 dilution

Secondary: IRDye800CW Goat Anti-Rabbit IgG at 1/20000 dilution

Predicted band size: 45 kD

Observed band size: 50 kD