

**NFKBID Polyclonal Antibody**  
**Purified Rabbit Polyclonal Antibody (Pab)**  
**Catalog # AP57661****Specification****NFKBID Polyclonal Antibody - Product Information**

Application	WB, IHC-P, IHC-F, IF, ICC, E
Primary Accession	<a href="#">Q8NI38</a>
Reactivity	Rat
Host	Rabbit
Clonality	Polyclonal
Calculated MW	33 KDa
Physical State	Liquid
Immunogen	KLH conjugated synthetic peptide derived from human NFKBID
Epitope Specificity	151-250/313
<b>Purity</b>	
affinity purified by Protein A	
Buffer	0.01M TBS (pH7.4) with 1% BSA, 0.02% Proclin300 and 50% Glycerol.
SUBCELLULAR LOCATION	Nucleus.
SIMILARITY	Belongs to the NF-kappa-B inhibitor family. Contains 6 ANK repeats.
SUBUNIT	Interacts with NFKB1, RELA and RELB; in the nucleus.
Important Note	This product as supplied is intended for research use only, not for use in human, therapeutic or diagnostic applications.

**NFKBID Polyclonal Antibody - Additional Information****Gene ID** 84807**Other Names**

NF-kappa-B inhibitor delta, NFKB inhibitor delta, I-kappa-B-delta, Ikb-delta, IkappaBdelta, IkappaBNS, T-cell activation NFKB-like protein, TA-NFKBH, NFKBID, IKBNS

**Dilution**

<span class = "dilution\_WB">WB~~1:1000</span><br \><span class = "dilution\_IHC-P">IHC-P~~N/A</span><br \><span class = "dilution\_IHC-F">IHC-F~~N/A</span><br \><span class = "dilution\_IF">IF~~1:50~200</span><br \><span class = "dilution\_ICC">ICC~~N/A</span><br \><span class = "dilution\_E">E~~N/A</span>

**Storage**

Store at -20 °C for one year. Avoid repeated freeze/thaw cycles. When reconstituted in sterile pH 7.4 0.01M PBS or diluent of antibody the antibody is stable for at least two weeks at 2-4 °C.

## NFKBID Polyclonal Antibody - Protein Information

**Name** NFKBID

**Synonyms** IKBNS

### Function

Regulates the expression of IL-2, IL-6, and other cytokines through regulation on NF-kappa-B activity. Functions in the regulation of inflammatory responses. Involved in the induction of T helper 17 cells (Th17) differentiation upon recognition of antigen by T cell antigen receptor (TCR). May also regulate TCR-induced negative selection of thymocytes.

### Cellular Location

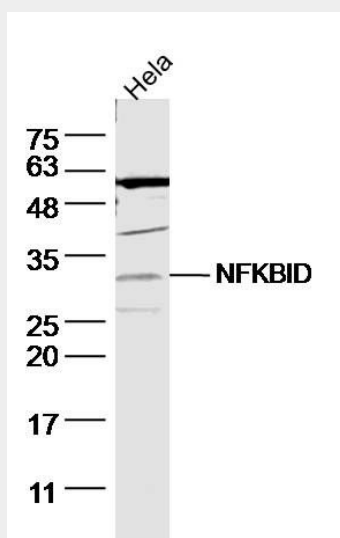
Nucleus {ECO:0000250|UniProtKB:Q2TB02}.

## NFKBID Polyclonal Antibody - Protocols

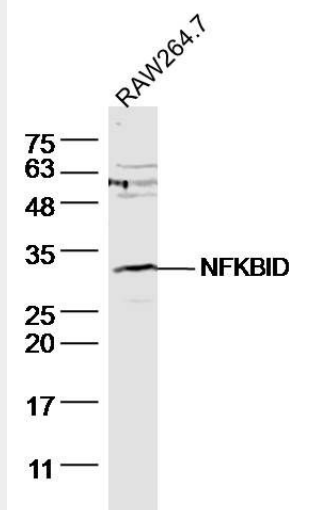
Provided below are standard protocols that you may find useful for product applications.

- [Western Blot](#)
- [Blocking Peptides](#)
- [Dot Blot](#)
- [Immunohistochemistry](#)
- [Immunofluorescence](#)
- [Immunoprecipitation](#)
- [Flow Cytometry](#)
- [Cell Culture](#)

## NFKBID Polyclonal Antibody - Images



Sample: HeLa (Human) Cell Lysate at 40 ug  
Primary: Anti-NFKBID (bs-19789R) at 1/300 dilution  
Secondary: IRDye800CW Goat Anti-Rabbit IgG at 1/20000 dilution  
Predicted band size: 33 kD  
Observed band size: 33 kD



Sample: RAW264.7 (Mouse) Cell Lysate at 40 ug  
Primary: Anti-NFKBID (bs-19789R) at 1/300 dilution  
Secondary: IRDye800CW Goat Anti-Rabbit IgG at 1/20000 dilution  
Predicted band size: 33 kD  
Observed band size: 33 kD