

PASD1/CT63 Polyclonal Antibody
Purified Rabbit Polyclonal Antibody (Pab)
Catalog # AP57703**Specification****PASD1/CT63 Polyclonal Antibody - Product Information**

Application	WB, IHC-P, IHC-F, IF, ICC, E
Primary Accession	Q8IV76
Host	Rabbit
Clonality	Polyclonal
Calculated MW	70 KDa
Physical State	Liquid
Immunogen	KLH conjugated synthetic peptide derived from human PASD1/CT63
Epitope Specificity	1-100/773
Isotype	IgG
Purity	
affinity purified by Protein A	
Buffer	0.01M TBS (pH7.4) with 1% BSA, 0.02% Proclin300 and 50% Glycerol.
SUBCELLULAR LOCATION	Nucleus.
SIMILARITY	Contains 1 PAS (PER-ARNT-SIM) domain.
Important Note	This product as supplied is intended for research use only, not for use in human, therapeutic or diagnostic applications.

Background Descriptions

This gene encodes a protein that is thought to function as a transcription factor. The protein is a cancer-associated antigen that can stimulate autologous T-cell responses, and it is therefore considered to be a potential immunotherapeutic target for the treatment of various hematopoietic malignancies, including diffuse large B-cell lymphoma. [provided by RefSeq, May 2010]

PASD1/CT63 Polyclonal Antibody - Additional Information**Gene ID** 139135**Other Names**

Circadian clock protein PASD1, Cancer/testis antigen 63, CT63, OX-TES-1, PAS domain-containing protein 1 {ECO:0000303|PubMed:15162151, ECO:0000312|HGNC:HGNC:20686}, PASD1 (http://www.genenames.org/cgi-bin/gene_symbol_report?hgnc_id=20686)

Target/Specificity

Testis-specific. Found in histologically normal tissues from patients with uterus, lung and small intestine cancers. Widespread expression seen in solid tumors and diffuse large B-cell lymphoma (DLBCL)-derived cell lines. Isoform 2 is expressed in all DLBCL-derived cell lines, while isoform 1 is preferentially expressed in cell lines derived from non-germinal center DLBCL.

Dilution

WB~~1:1000<br \>IHC-P~~N/A<br \>IHC-F~~N/A<br \>IF~~1:50~200<br \>ICC~~N/A<br \>E~~N/A

Format

0.01M TBS(pH7.4), 0.09% (W/V) sodium azide and 50% Glyce

Storage

Store at -20 °C for one year. Avoid repeated freeze/thaw cycles. When reconstituted in sterile pH 7.4 0.01M PBS or diluent of antibody the antibody is stable for at least two weeks at 2-4 °C.

PASD1/CT63 Polyclonal Antibody - Protein Information

Name PASD1 ([HGNC:20686](#))

Function

Functions as a suppressor of the biological clock that drives the daily circadian rhythms of cells throughout the body (PubMed:25936801). Acts as a nuclear repressor of the CLOCK-BMAL1 heterodimer-mediated transcriptional activation of the core clock components (PubMed:25936801). Inhibits circadian clock function in cancer cells, when overexpressed (PubMed:25936801).

Cellular Location

[Isoform 1]: Nucleus. Note=Associates preferentially at the periphery of the nucleus with heterochromatin (PubMed:25936801)

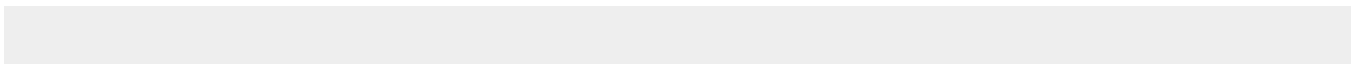
Tissue Location

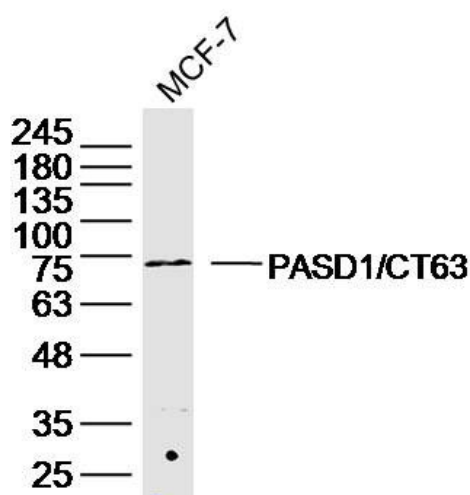
Testis-specific (PubMed:25936801). Expressed in a broad range of cancer cells, including melanoma, lung cancer, and breast cancer (at protein level). Testis-specific (PubMed:15162151) Found in histologically normal tissues from patients with uterus, lung and small intestine cancers. Widespread expression seen in solid tumors and diffuse large B-cell lymphoma (DLBCL)-derived cell lines. Isoform 2 is expressed in all DLBCL-derived cell lines, while isoform 1 is preferentially expressed in cell lines derived from non-germinal center DLBCL (PubMed:15162151).

PASD1/CT63 Polyclonal Antibody - Protocols

Provided below are standard protocols that you may find useful for product applications.

- [Western Blot](#)
- [Blocking Peptides](#)
- [Dot Blot](#)
- [Immunohistochemistry](#)
- [Immunofluorescence](#)
- [Immunoprecipitation](#)
- [Flow Cytometry](#)
- [Cell Culture](#)

PASD1/CT63 Polyclonal Antibody - Images



Sample: MCF-7 Cell (Human) Lysate at 40 ug
Primary: Anti-PASD1/CT63 (bs-19895R) at 1/300 dilution
Secondary: IRDye800CW Goat Anti-Rabbit IgG at 1/20000 dilution
Predicted band size: 70 kD
Observed band size: 73 kD