

PATL2 Polyclonal Antibody
Purified Rabbit Polyclonal Antibody (Pab)
Catalog # AP57705

Specification

PATL2 Polyclonal Antibody - Product Information

| | |
|--------------------------------|---|
| Application | WB, IHC-P, IHC-F, IF, ICC, E |
| Primary Accession | C9JE40 |
| Reactivity | Rat, Dog |
| Host | Rabbit |
| Clonality | Polyclonal |
| Calculated MW | 61 KDa |
| Physical State | Liquid |
| Immunogen | KLH conjugated synthetic peptide derived from human PATL2 |
| Epitope Specificity | 301-400/543 |
| Isotype | IgG |
| Purity | |
| affinity purified by Protein A | |
| Buffer | 0.01M TBS (pH7.4) with 1% BSA, 0.02% Proclin300 and 50% Glycerol. |
| SUBCELLULAR LOCATION | Cytoplasm. Nucleus. |
| SIMILARITY | Belongs to the PAT1 family. |
| SUBUNIT | Interacts with LSM1. |
| Important Note | This product as supplied is intended for research use only, not for use in human, therapeutic or diagnostic applications. |

PATL2 Polyclonal Antibody - Additional Information

Gene ID 197135

Other Names

Protein PAT1 homolog 2, PAT1-like protein 2, Protein PAT1 homolog a, Pat1a, hPat1a, PATL2

Dilution

WB~~1:1000<br \>IHC-P~~N/A<br \>IHC-F~~N/A<br \>IF~~1:50~200<br \>ICC~~N/A<br \>E~~N/A

Storage

Store at -20 °C for one year. Avoid repeated freeze/thaw cycles. When reconstituted in sterile pH 7.4 0.01M PBS or diluent of antibody the antibody is stable for at least two weeks at 2-4 °C.

PATL2 Polyclonal Antibody - Protein Information

Name PATL2

Function

RNA-binding protein that acts as a translational repressor.

Cellular Location

Cytoplasm. Nucleus {ECO:0000250|UniProtKB:A2ARM1}

Tissue Location

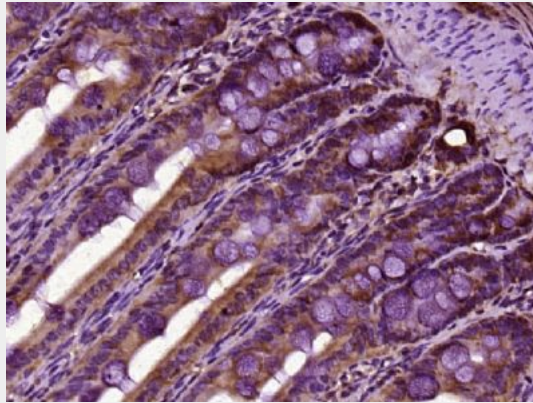
Highly expressed in oocytes.

PATL2 Polyclonal Antibody - Protocols

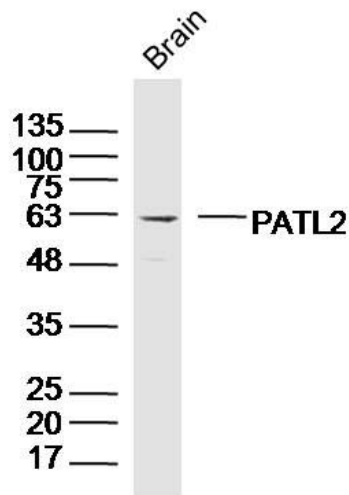
Provided below are standard protocols that you may find useful for product applications.

- [Western Blot](#)
- [Blocking Peptides](#)
- [Dot Blot](#)
- [Immunohistochemistry](#)
- [Immunofluorescence](#)
- [Immunoprecipitation](#)
- [Flow Cytometry](#)
- [Cell Culture](#)

PATL2 Polyclonal Antibody - Images



Paraformaldehyde-fixed, paraffin embedded (rat intestine tissue); Antigen retrieval by boiling in sodium citrate buffer (pH6.0) for 15min; Block endogenous peroxidase by 3% hydrogen peroxide for 20 minutes; Blocking buffer (normal goat serum) at 37°C for 30min; Antibody incubation with (PATL2) Polyclonal Antibody, Unconjugated (bs-19898R) at 1:400 overnight at 4°C, followed by operating according to SP Kit(Rabbit) (sp-0023) instructions and DAB staining.



Sample: Brain (Mouse) Lysate at 40 ug
Primary: Anti- PATL2 (bs-19898R) at 1/300 dilution
Secondary: IRDye800CW Goat Anti-Rabbit IgG at 1/20000 dilution
Predicted band size: 61 kD
Observed band size: 61 kD