

ARP1B/PC3 Polyclonal Antibody
Purified Rabbit Polyclonal Antibody (Pab)
Catalog # AP57707

Specification

ARP1B/PC3 Polyclonal Antibody - Product Information

Application	WB, IHC-P, IHC-F, IF, ICC, E
Primary Accession	P42025
Reactivity	Pig, Dog, Bovine
Host	Rabbit
Clonality	Polyclonal
Calculated MW	42 KDa
Physical State	Liquid
Immunogen	KLH conjugated synthetic peptide derived from human ARP1B
Epitope Specificity	301-376/376
Isotype	IgG
Purity	
affinity purified by Protein A	
Buffer	0.01M TBS (pH7.4) with 1% BSA, 0.02% Proclin300 and 50% Glycerol.
SUBCELLULAR LOCATION	Cytoplasm > cytoskeleton. Cytoplasm > cytoskeleton > centrosome.
SIMILARITY	Belongs to the actin family. ARP1 subfamily.
Important Note	This product as supplied is intended for research use only, not for use in human, therapeutic or diagnostic applications.

Background Descriptions

This gene encodes a 42.3 kD subunit of dynactin, a macromolecular complex consisting of 10 subunits ranging in size from 22 to 150 kD. Dynactin binds to both microtubules and cytoplasmic dynein and is involved in a diverse array of cellular functions, including ER-to-Golgi transport, the centripetal movement of lysosomes and endosomes, spindle formation, chromosome movement, nuclear positioning, and axonogenesis. This subunit, like ACTR1A, is an actin-related protein. These two proteins, which are of equal length and share 90% amino acid identity, are present in a constant ratio of approximately 1:15 in the dynactin complex. [provided by RefSeq, Aug 2008]

ARP1B/PC3 Polyclonal Antibody - Additional Information

Gene ID 10120

Other Names

Beta-centractin, Actin-related protein 1B, ARP1B, ACTR1B, CTRN2

Dilution

WB~~1:1000<br \>IHC-P~~N/A<br \>IHC-F~~N/A<br \><span class =

=IF~~1:50~200<br \>ICC~~N/A<br \>E~~N/A

Format

0.01M TBS(pH7.4), 0.09% (W/V) sodium azide and 50% Glyce

Storage

Store at -20 °C for one year. Avoid repeated freeze/thaw cycles. When reconstituted in sterile pH 7.4 0.01M PBS or diluent of antibody the antibody is stable for at least two weeks at 2-4 °C.

ARP1B/PC3 Polyclonal Antibody - Protein Information

Name ACTR1B

Synonyms CTRN2

Function

Component of a multi-subunit complex involved in microtubule based vesicle motility. It is associated with the centrosome.

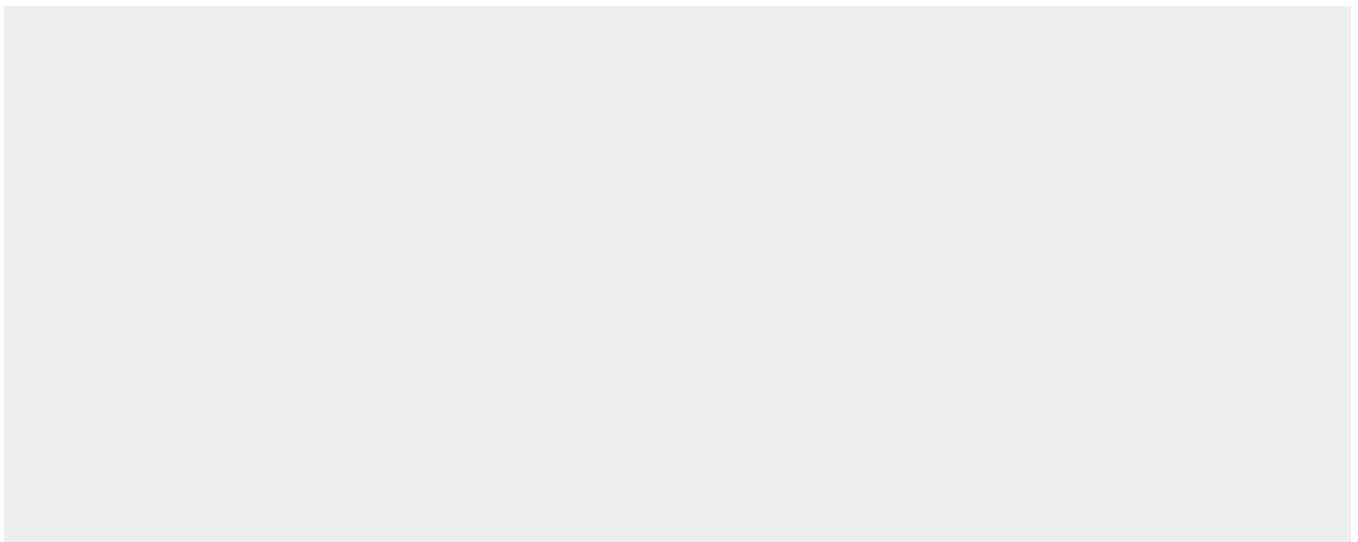
Cellular Location

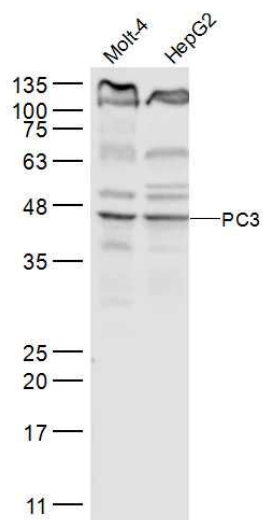
Cytoplasm, cytoskeleton. Cytoplasm, cytoskeleton, microtubule organizing center, centrosome

ARP1B/PC3 Polyclonal Antibody - Protocols

Provided below are standard protocols that you may find useful for product applications.

- [Western Blot](#)
- [Blocking Peptides](#)
- [Dot Blot](#)
- [Immunohistochemistry](#)
- [Immunofluorescence](#)
- [Immunoprecipitation](#)
- [Flow Cytometry](#)
- [Cell Culture](#)

ARP1B/PC3 Polyclonal Antibody - Images

**Sample:**

Molt-4(Human) Cell Lysate at 30 ug

HepG2(Human) Cell Lysate at 30 ug

Primary: Anti-PC3 (bs-19902R) at 1/300 dilution

Secondary: IRDye800CW Goat Anti-Rabbit IgG at 1/20000 dilution

Predicted band size: 42 kD

Observed band size: 42 kD