

PCTAIRE1 Polyclonal Antibody
Purified Rabbit Polyclonal Antibody (Pab)
Catalog # AP57712**Specification**

PCTAIRE1 Polyclonal Antibody - Product Information

Application	WB, IHC-P, IHC-F, IF, ICC, E
Primary Accession	Q00536
Reactivity	Rat, Pig, Dog, Bovine
Host	Rabbit
Clonality	Polyclonal
Calculated MW	56 KDa
Physical State	Liquid
Immunogen	KLH conjugated synthetic peptide derived from human PCTAIRE1
Epitope Specificity	61-160/496
Isotype	IgG
Purity	
affinity purified by Protein A	
Buffer	0.01M TBS (pH7.4) with 1% BSA, 0.02% Proclin300 and 50% Glycerol.
SUBCELLULAR LOCATION	Cytoplasm. Cytoplasmic vesicle, secretory vesicle. Cell membrane; Peripheral membrane protein; Cytoplasmic side. Cell junction, synapse, synaptosome
SIMILARITY	Belongs to the protein kinase superfamily. CMGC Ser/Thr protein kinase family. CDC2/CDKX subfamily. Contains 1 protein kinase domain.
SUBUNIT	Found in a complex containing CABLES1, CDK17 and TDRD7. Interacts with YWHAH, YWHAQ and YWHAZ. Interacts with NSF. Identified in a complex with NSF, syntaxin-1, synaptotagmin, SYN1, SYP and CDK5R1 (By similarity). Interacts with BRSK2. Interacts with CCNY; this increases the CDK16 kinase activity.
Important Note	This product as supplied is intended for research use only, not for use in human, therapeutic or diagnostic applications.

Background Descriptions

The protein encoded by this gene belongs to the cdc2/cdkx subfamily of the ser/thr family of protein kinases. It may play a role in signal transduction cascades in terminally differentiated cells; in exocytosis; and in transport of secretory cargo from the endoplasmic reticulum. This gene is thought to escape X inactivation. Alternative splicing results in multiple transcript variants encoding different isoforms. [provided by RefSeq, Dec 2009]

PCTAIRE1 Polyclonal Antibody - Additional Information

Gene ID 5127**Other Names**

Cyclin-dependent kinase 16, 2.7.11.22, Cell division protein kinase 16, PCTAIRE-motif protein kinase 1, Serine/threonine-protein kinase PCTAIRE-1, CDK16, PCTAIRE1, PCTK1

Dilution

WB~~1:1000<br \>IHC-P~~N/A<br \>IHC-F~~N/A<br \>IF~~1:50~200<br \>ICC~~N/A<br \>E~~N/A

Format

0.01M TBS(pH7.4), 0.09% (W/V) sodium azide and 50% Glyce

Storage

Store at -20 °C for one year. Avoid repeated freeze/thaw cycles. When reconstituted in sterile pH 7.4 0.01M PBS or diluent of antibody the antibody is stable for at least two weeks at 2-4 °C.

PCTAIRE1 Polyclonal Antibody - Protein Information

Name CDK16

Synonyms PCTAIRE1, PCTK1

Function

Protein kinase that plays a role in vesicle-mediated transport processes and exocytosis. Regulates GH1 release by brain neurons. Phosphorylates NSF, and thereby regulates NSF oligomerization. Required for normal spermatogenesis. Regulates neuron differentiation and dendrite development (By similarity). Plays a role in the regulation of insulin secretion in response to changes in blood glucose levels. Can phosphorylate CCNY at 'Ser-336' (in vitro).

Cellular Location

Cytoplasm. Cytoplasmic vesicle, secretory vesicle {ECO:0000250|UniProtKB:Q63686} Cell membrane; Peripheral membrane protein; Cytoplasmic side. Synapse, synaptosome {ECO:0000250|UniProtKB:Q63686}. Note=Colocalizes with insulin in pancreas islets. Recruited to the cell membrane by CCNY

Tissue Location

Detected in pancreas islets (at protein level). Detected in brain and pancreas.

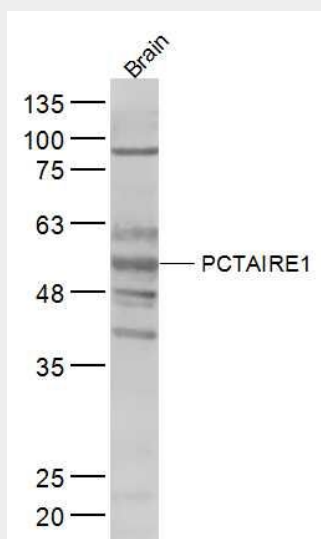
PCTAIRE1 Polyclonal Antibody - Protocols

Provided below are standard protocols that you may find useful for product applications.

- [Western Blot](#)
- [Blocking Peptides](#)
- [Dot Blot](#)
- [Immunohistochemistry](#)
- [Immunofluorescence](#)
- [Immunoprecipitation](#)
- [Flow Cytometry](#)

- [Cell Culture](#)

PCTAIRE1 Polyclonal Antibody - Images



Sample:

Brain (Mouse) Lysate at 40 ug

Primary: Anti-PCTAIRE1 (bs-19916R) at 1/300 dilution

Secondary: IRDye800CW Goat Anti-Rabbit IgG at 1/20000 dilution

Predicted band size: 56 kD

Observed band size: 56 kD