

**AFTPH Antibody (C-term)**  
**Affinity Purified Rabbit Polyclonal Antibody (Pab)**  
**Catalog # AP5771b****Specification**

---

**AFTPH Antibody (C-term) - Product Information**

Application	FC, IHC-P, WB,E
Primary Accession	<a href="#">Q6ULP2</a>
Other Accession	<a href="#">Q80WT5</a> , <a href="#">NP_001002243.1</a>
Reactivity	Human
Predicted	Mouse
Host	Rabbit
Clonality	Polyclonal
Isotype	Rabbit IgG
Calculated MW	102113
Antigen Region	844-871

**AFTPH Antibody (C-term) - Additional Information****Gene ID** 54812**Other Names**

Aftiphilin, AFTPH, AFTH

**Target/Specificity**

This AFTPH antibody is generated from rabbits immunized with a KLH conjugated synthetic peptide between 844-871 amino acids from the C-terminal region of human AFTPH.

**Dilution**

FC~~1:10~50

IHC-P~~1:50~100

WB~~1:2000

E~~Use at an assay dependent concentration.

**Format**

Purified polyclonal antibody supplied in PBS with 0.09% (W/V) sodium azide. This antibody is purified through a protein A column, followed by peptide affinity purification.

**Storage**

Maintain refrigerated at 2-8°C for up to 2 weeks. For long term storage store at -20°C in small aliquots to prevent freeze-thaw cycles.

**Precautions**

AFTPH Antibody (C-term) is for research use only and not for use in diagnostic or therapeutic procedures.

**AFTPH Antibody (C-term) - Protein Information**

**Name** AFTPH

**Synonyms** AFTH

**Function** Component of clathrin-coated vesicles (PubMed:[15758025](#)). Component of the aftiphilin/p200/gamma-synergin complex, which plays roles in AP1G1/AP-1-mediated protein trafficking including the trafficking of transferrin from early to recycling endosomes, and the membrane trafficking of furin and the lysosomal enzyme cathepsin D between the trans-Golgi network (TGN) and endosomes (PubMed:[15758025](#)).

**Cellular Location**

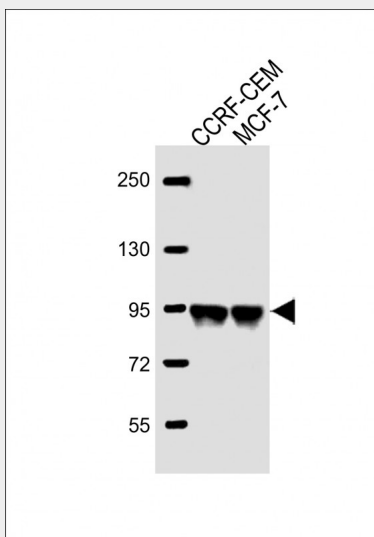
Cytoplasm. Cytoplasm, perinuclear region. Cytoplasmic vesicle, clathrin-coated vesicle.  
Note=Co-localizes with AP1G1/AP- 1 in the cytoplasm (PubMed:14665628, PubMed:15758025). Recruited to the perinuclear region by AP1G1/AP-1 (PubMed:15758025)

**AFTPH Antibody (C-term) - Protocols**

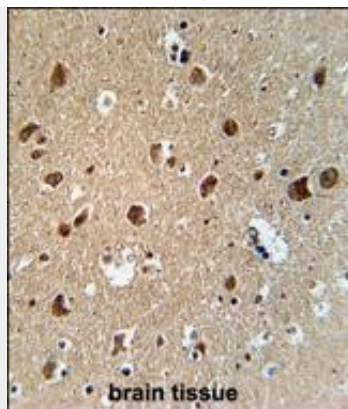
Provided below are standard protocols that you may find useful for product applications.

- [Western Blot](#)
- [Blocking Peptides](#)
- [Dot Blot](#)
- [Immunohistochemistry](#)
- [Immunofluorescence](#)
- [Immunoprecipitation](#)
- [Flow Cytometry](#)
- [Cell Culture](#)

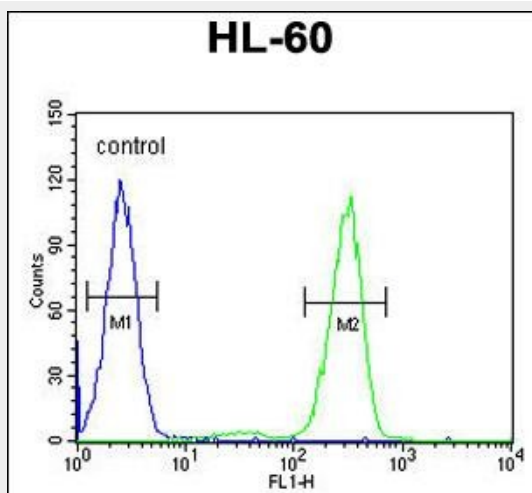
**AFTPH Antibody (C-term) - Images**



All lanes : Anti-AFTPH Antibody (C-term) at 1:2000 dilution Lane 1: CCRF-CEM whole cell lysate Lane 2: MCF-7 whole cell lysate Lysates/proteins at 20 µg per lane. Secondary Goat Anti-Rabbit IgG, (H+L), Peroxidase conjugated at 1/10000 dilution. Predicted band size : 102 kDa Blocking/Dilution buffer: 5% NFDM/TBST.



AFTPH Antibody (C-term) (Cat. #AP5771b) immunohistochemistry analysis in formalin fixed and paraffin embedded human brain tissue followed by peroxidase conjugation of the secondary antibody and DAB staining. This data demonstrates the use of the AFTPH Antibody (C-term) for immunohistochemistry. Clinical relevance has not been evaluated.



AFTPH Antibody (C-term) (Cat. #AP5771b) flow cytometric analysis of HL-60 cells (right histogram) compared to a negative control cell (left histogram). FITC-conjugated goat-anti-rabbit secondary antibodies were used for the analysis.

#### **AFTPH Antibody (C-term) - Background**

AFTPH may play a role in membrane trafficking.

#### **AFTPH Antibody (C-term) - References**

- Lui-Roberts, W.W., et al. Mol. Biol. Cell 19(12):5072-5081(2008)
- Beausoleil, S.A., et al. Nat. Biotechnol. 24(10):1285-1292(2006)
- Hirst, J., et al. Mol. Biol. Cell 16(5):2554-2565(2005)
- Burman, J.L., et al. FEBS Lett. 579(10):2177-2184(2005)
- Beausoleil, S.A., et al. Proc. Natl. Acad. Sci. U.S.A. 101(33):12130-12135(2004)
- Beausoleil, S.A., et al. Proc. Natl. Acad. Sci. U.S.A. 101(33):12130-12135(2004)
- Mattera, R., et al. J. Biol. Chem. 279(9):8018-8028(2004)