

Prickle 2 Polyclonal Antibody
Purified Rabbit Polyclonal Antibody (Pab)
Catalog # AP57733

Specification

Prickle 2 Polyclonal Antibody - Product Information

Application	IHC-P, IHC-F, IF, ICC
Primary Accession	Q7Z3G6
Reactivity	Rat, Pig, Dog
Host	Rabbit
Clonality	Polyclonal
Calculated MW	96 KDa
Physical State	Liquid
Immunogen	KLH conjugated synthetic peptide derived from human Prickle 2
Epitope Specificity	401-500/844
Isotype	IgG
Purity	
affinity purified by Protein A	
Buffer	0.01M TBS (pH7.4) with 1% BSA, 0.02% Proclin300 and 50% Glycerol.
SUBCELLULAR LOCATION	Nucleus membrane.
SIMILARITY	Belongs to the prickle / espinas / testin family. Contains 3 LIM zinc-binding domains. Contains 1 PET domain.
DISEASE	Epilepsy, progressive myoclonic 5.
Important Note	This product as supplied is intended for research use only, not for use in human, therapeutic or diagnostic applications.

Background Descriptions

This gene encodes a homolog of Drosophila prickle. The exact function of this gene is not known, however, studies in mice suggest that it may be involved in seizure prevention. Mutations in this gene are associated with progressive myoclonic epilepsy type 5. [provided by RefSeq, Dec 2011]

Prickle 2 Polyclonal Antibody - Additional Information

Gene ID 166336

Other Names

Prickle-like protein 2, PRICKLE2

Target/Specificity

Expressed in brain, eye and testis. Additionally in fetal brain, adult cartilage, pancreatic islet, gastric cancer and uterus tumors.

Dilution

IHC-P~~N/A
IHC-F~~N/A

="dilution_IF">IF~~1:50~200<br \>ICC~~N/A

Format

0.01M TBS(pH7.4), 0.09% (W/V) sodium azide and 50% Glyce

Storage

Store at -20 °C for one year. Avoid repeated freeze/thaw cycles. When reconstituted in sterile pH 7.4 0.01M PBS or diluent of antibody the antibody is stable for at least two weeks at 2-4 °C.

Prickle 2 Polyclonal Antibody - Protein Information

Name PRICKLE2

Cellular Location

Nucleus membrane.

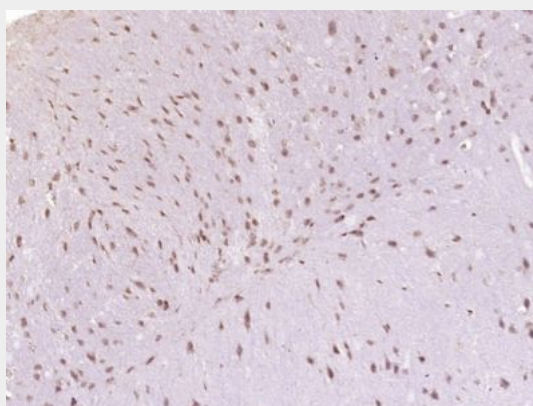
Tissue Location

Expressed in brain, eye and testis. Additionally in fetal brain, adult cartilage, pancreatic islet, gastric cancer and uterus tumors.

Prickle 2 Polyclonal Antibody - Protocols

Provided below are standard protocols that you may find useful for product applications.

- [Western Blot](#)
- [Blocking Peptides](#)
- [Dot Blot](#)
- [Immunohistochemistry](#)
- [Immunofluorescence](#)
- [Immunoprecipitation](#)
- [Flow Cytometry](#)
- [Cell Culture](#)

Prickle 2 Polyclonal Antibody - Images

Paraformaldehyde-fixed, paraffin embedded (Mouse brain); Antigen retrieval by boiling in sodium citrate buffer (pH6.0) for 15min; Block endogenous peroxidase by 3% hydrogen peroxide for 20 minutes; Blocking buffer (normal goat serum) at 37°C for 30min; Antibody incubation with (Prickle 2) Polyclonal Antibody, Unconjugated (bs-19961R) at 1:400 overnight at 4°C, followed by

operating according to SP Kit(Rabbit) (sp-0023) instructions and DAB staining.