

PPP3CC Polyclonal Antibody
Purified Rabbit Polyclonal Antibody (Pab)
Catalog # AP57737

Specification

PPP3CC Polyclonal Antibody - Product Information

Application	WB, IHC-P, IHC-F, IF, ICC, E
Primary Accession	P48454
Reactivity	Rat, Pig, Dog, Bovine
Host	Rabbit
Clonality	Polyclonal
Calculated MW	58 KDa
Physical State	Liquid
Immunogen	KLH conjugated synthetic peptide derived from human PPP3CC
Epitope Specificity	51-150/512
Isotype	IgG
Purity	
affinity purified by Protein A	
Buffer	0.01M TBS (pH7.4) with 1% BSA, 0.02% Proclin300 and 50% Glycerol.
SIMILARITY	Belongs to the PPP phosphatase family. PP-2B subfamily.
SUBUNIT	Composed of two components (A and B), the A component is the catalytic subunit and the B component confers calcium sensitivity.
Important Note	This product as supplied is intended for research use only, not for use in human, therapeutic or diagnostic applications.

Background Descriptions

Calcineurin is a calcium-dependent, calmodulin-stimulated protein phosphatase involved in the downstream regulation of dopaminergic signal transduction. Calcineurin is composed of a regulatory subunit and a catalytic subunit. The protein encoded by this gene represents one of the regulatory subunits that has been found for calcineurin. Three transcript variants encoding different isoforms have been found for this gene. [provided by RefSeq, Sep 2011]

PPP3CC Polyclonal Antibody - Additional Information

Gene ID 5533

Other Names

Serine/threonine-protein phosphatase 2B catalytic subunit gamma isoform, 3.1.3.16, CAM-PRP catalytic subunit, Calcineurin, testis-specific catalytic subunit, Calmodulin-dependent calcineurin A subunit gamma isoform, PPP3CC, CALNA3, CNA3

Target/Specificity

Testis.

Dilution

WB~~1:1000<br \>IHC-P~~N/A<br \>IHC-F~~N/A<br \>IF~~1:50~200<br \>ICC~~N/A<br \>E~~N/A

Format

0.01M TBS(pH7.4), 0.09% (W/V) sodium azide and 50% Glyce

Storage

Store at -20 °C for one year. Avoid repeated freeze/thaw cycles. When reconstituted in sterile pH 7.4 0.01M PBS or diluent of antibody the antibody is stable for at least two weeks at 2-4 °C.

PPP3CC Polyclonal Antibody - Protein Information

Name PPP3CC

Synonyms CALNA3, CNA3

Function

Calcium-dependent, calmodulin-stimulated protein phosphatase which plays an essential role in the transduction of intracellular Ca(2+)-mediated signals. Dephosphorylates and activates transcription factor NFATC1. Dephosphorylates and inactivates transcription factor ELK1. Dephosphorylates DARPP32.

Cellular Location

Mitochondrion {ECO:0000250|UniProtKB:P48455}. Note=Localizes in the mitochondria in a SPATA33-dependent manner {ECO:0000250|UniProtKB:P48455}

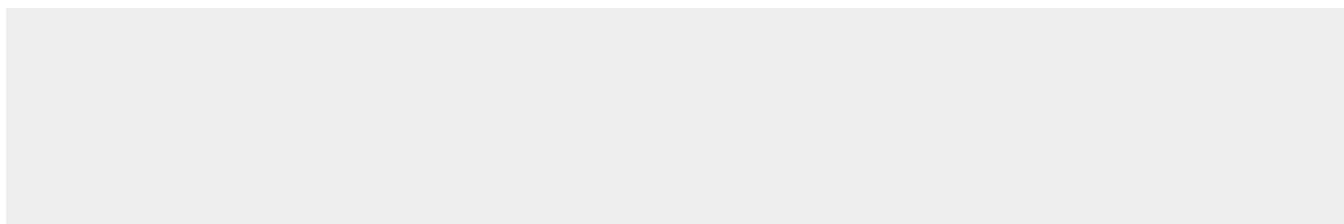
Tissue Location

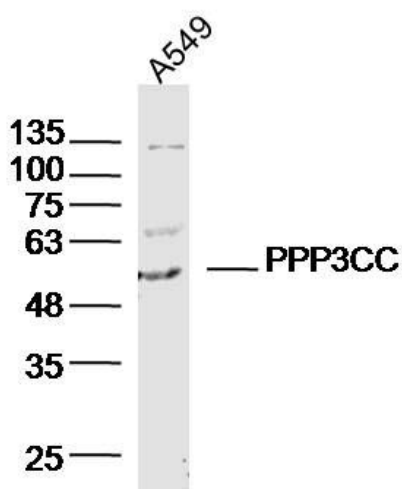
Testis..

PPP3CC Polyclonal Antibody - Protocols

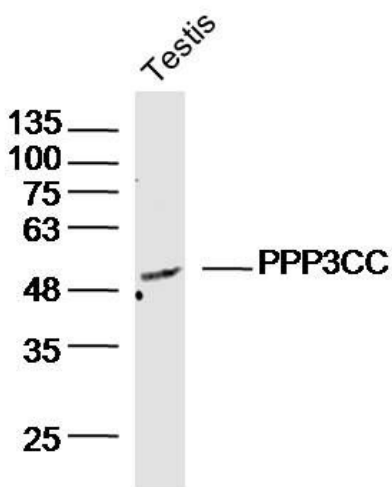
Provided below are standard protocols that you may find useful for product applications.

- [Western Blot](#)
- [Blocking Peptides](#)
- [Dot Blot](#)
- [Immunohistochemistry](#)
- [Immunofluorescence](#)
- [Immunoprecipitation](#)
- [Flow Cytometry](#)
- [Cell Culture](#)

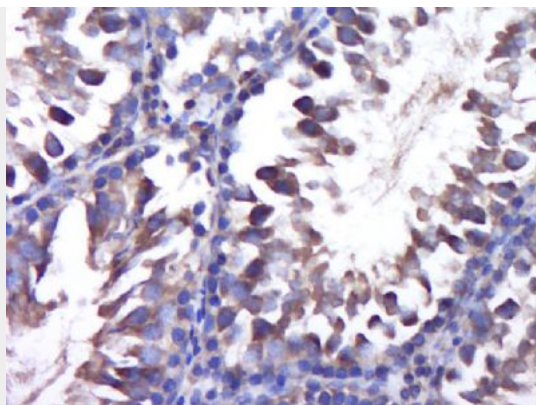
PPP3CC Polyclonal Antibody - Images



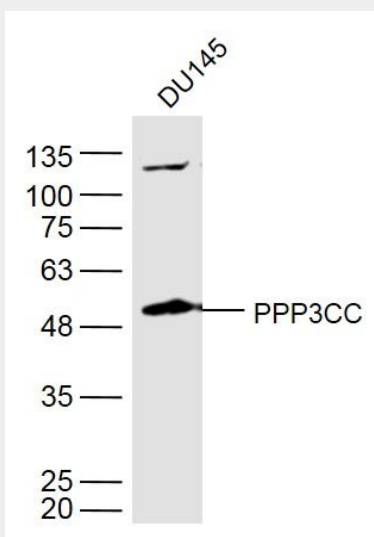
Sample: A549 (Human)Cell Lysate at 40 ug
Primary: Anti-PPP3CC(bs-19973R)at 1/300 dilution
Secondary: IRDye800CW Goat Anti-RabbitIgG at 1/20000 dilution
Predicted band size: 58kD
Observed band size: 58kD



Sample: Testis(Mouse)Lysate at 40 ug
Primary: Anti-PPP3CC(bs-19973R)at 1/300 dilution
Secondary: IRDye800CW Goat Anti-RabbitIgG at 1/20000 dilution
Predicted band size: 58kD
Observed band size: 58kD



Paraformaldehyde-fixed, paraffin embedded (Rat testis); Antigen retrieval by boiling in sodium citrate buffer (pH6.0) for 15min; Block endogenous peroxidase by 3% hydrogen peroxide for 20 minutes; Blocking buffer (normal goat serum) at 37°C for 30min; Antibody incubation with (PPP3CC) Polyclonal Antibody, Unconjugated (bs-19973R) at 1:400 overnight at 4°C, followed by operating according to SP Kit(Rabbit) (sp-0023) instructions and DAB staining.



Sample:

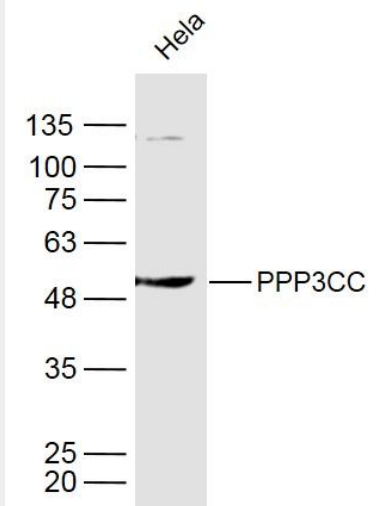
DU145(Human) Cell Lysate at 40 ug

Primary: Anti-PPP3CC (bs-19973R) at 1/300 dilution

Secondary: IRDye800CW Goat Anti-Rabbit IgG at 1/20000 dilution

Predicted band size: 58 kD

Observed band size: 58 kD



Sample:

HeLa(Human) Cell Lysate at 40 ug

Primary: Anti-PPP3CC (bs-19973R) at 1/300 dilution

Secondary: IRDye800CW Goat Anti-Rabbit IgG at 1/20000 dilution

Predicted band size: 58 kD

Observed band size: 58 kD