

PPPDE1/FAM152A Polyclonal Antibody
Purified Rabbit Polyclonal Antibody (Pab)
Catalog # AP57738

Specification

PPPDE1/FAM152A Polyclonal Antibody - Product Information

Application	WB, IHC-P, IHC-F, IF, ICC
Primary Accession	O9BSY9
Reactivity	Rat, Pig, Dog, Bovine
Host	Rabbit
Clonality	Polyclonal
Calculated MW	21 KDa
Physical State	Liquid
Immunogen	KLH conjugated synthetic peptide derived from human PPPDE1/FAM152A
Epitope Specificity	21-100/194
Isotype	IgG
Purity	
affinity purified by Protein A	
Buffer	0.01M TBS (pH7.4) with 1% BSA, 0.02% Proclin300 and 50% Glycerol.
SUBCELLULAR LOCATION	Cytoplasm
SIMILARITY	Belongs to the UPF0326 family. Contains 1 PPPDE peptidase domain.
SUBUNIT	
Important Note	This product as supplied is intended for research use only, not for use in human, therapeutic or diagnostic applications.

PPPDE1/FAM152A Polyclonal Antibody - Additional Information

Gene ID 51029

Other Names

Deubiquitinase DESI2, 3.4.19.12, Desumoylating isopeptidase 2, DeSI-2, PPPDE peptidase domain-containing protein 1, Protein FAM152A, DESI2

Dilution

WB~~1:1000<br \>IHC-P~~N/A<br \>IHC-F~~N/A<br \>IF~~1:50~200<br \>ICC~~N/A

Format

0.01M TBS(pH7.4), 0.09% (W/V) sodium azide and 50% Glyce

Storage

Store at -20 °C for one year. Avoid repeated freeze/thaw cycles. When reconstituted in sterile pH 7.4 0.01M PBS or diluent of antibody the antibody is stable for at least two weeks at 2-4 °C.

PPPDE1/FAM152A Polyclonal Antibody - Protein Information

Name DESI2

Function

Has deubiquitinating activity towards 'Lys-48'- and 'Lys-63'- linked polyubiquitin chains. Deubiquitinates 'Lys-48'-linked polyubiquitination of RPS7 leading to its stabilization (PubMed:28483520). Exhibits palmitoyl protein thioesterase (S- depalmitoylation) activity towards synthetic substrates 4-methylumbelliferyl-6-S-palmitoyl-beta-D-glucopyranoside and S- depalmitoylation probe 5 (DPP-5) (PubMed:35427157).

Cellular Location

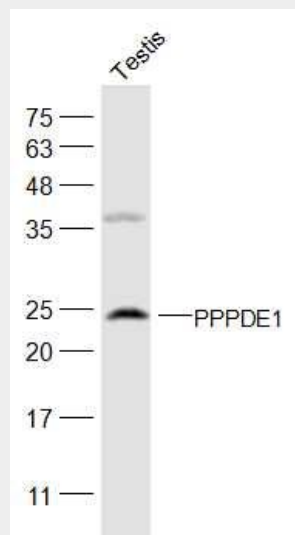
Cytoplasm {ECO:0000250|UniProtKB:Q9D291}.

PPPDE1/FAM152A Polyclonal Antibody - Protocols

Provided below are standard protocols that you may find useful for product applications.

- [Western Blot](#)
- [Blocking Peptides](#)
- [Dot Blot](#)
- [Immunohistochemistry](#)
- [Immunofluorescence](#)
- [Immunoprecipitation](#)
- [Flow Cytometry](#)
- [Cell Culture](#)

PPPDE1/FAM152A Polyclonal Antibody - Images



Sample:

Testis (Mouse) Lysate at 40 ug

Primary: Anti-PPPDE1 (bs-19976R) at 1/300 dilution

Secondary: IRDye800CW Goat Anti-Rabbit IgG at 1/20000 dilution

Predicted band size: 23 kD

Observed band size: 23 kD