

**MTA3 Polyclonal Antibody**  
**Purified Rabbit Polyclonal Antibody (Pab)**  
**Catalog # AP57753**

**Specification**

**MTA3 Polyclonal Antibody - Product Information**

Application	IHC-P, IHC-F, IF, ICC, E
Primary Accession	<a href="#">Q9BTC8</a>
Reactivity	Rat, Dog, Bovine
Host	Rabbit
Clonality	Polyclonal
Calculated MW	67 KDa
Physical State	Liquid
Immunogen	KLH conjugated synthetic peptide derived from human MTA3
Epitope Specificity	501-594/594
Isotype	IgG
<b>Purity</b>	
affinity purified by Protein A	
Buffer	0.01M TBS (pH7.4) with 1% BSA, 0.02% Proclin300 and 50% Glycerol.
SUBCELLULAR LOCATION	Nucleus.
SIMILARITY	Contains 1 BAH domain. Contains 1 ELM2 domain. Contains 1 GATA-type zinc finger. Contains 1 SANT domain.
Important Note	This product as supplied is intended for research use only, not for use in human, therapeutic or diagnostic applications.

**Background Descriptions**

Metastasis-associated protein 3 (MTA3) is a subunit of the Mi-2/NuRD transcriptional corepressor complex. MTA3 and the Mi-2/NuRD complex mediate repression of Snail in breast cancer cells where MTA3 works to maintain a differentiated, epithelial status. The protein is involved in gene expression regulation by covalent modifications of histone proteins. There are two known isoforms of MTA3, a short and a long form. The short isoform binds to ER and sequesters it to the cytoplasm and better non-genomic responses, whereas the long form is found in the nucleus. MTA3 is widely expressed in with highest expression in brain, adrenal glands, ovaries and virgin mammary glands. It has been found to be expressed in higher levels in tumors than in adjacent normal tissue in the same individual.

**MTA3 Polyclonal Antibody - Additional Information**

**Other Names**

Metastasis-associated protein MTA3, MTA3, KIAA1266

**Dilution**

<span class = "dilution\_IHC-P">IHC-P~~N/A</span><br \><span class = "dilution\_IHC-F">IHC-F~~N/A</span><br \><span class = "dilution\_IF">IF~~1:50~200</span><br \><span class = "dilution\_ICC">ICC~~N/A</span><br \>

\><span class = "dilution\_E">E~~N/A</span>

**Format**

0.01M TBS(pH7.4), 0.09% (W/V) sodium azide and 50% Glyce

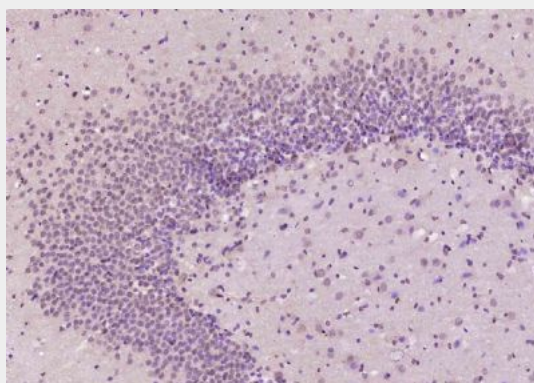
**Storage**

Store at -20 °C for one year. Avoid repeated freeze/thaw cycles. When reconstituted in sterile pH 7.4 0.01M PBS or diluent of antibody the antibody is stable for at least two weeks at 2-4 °C.

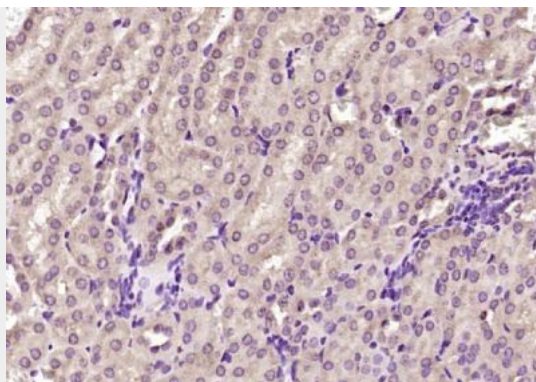
**MTA3 Polyclonal Antibody - Protein Information****MTA3 Polyclonal Antibody - Protocols**

Provided below are standard protocols that you may find useful for product applications.

- [Western Blot](#)
- [Blocking Peptides](#)
- [Dot Blot](#)
- [Immunohistochemistry](#)
- [Immunofluorescence](#)
- [Immunoprecipitation](#)
- [Flow Cytometry](#)
- [Cell Culture](#)

**MTA3 Polyclonal Antibody - Images**

Paraformaldehyde-fixed, paraffin embedded (rat brain); Antigen retrieval by boiling in sodium citrate buffer (pH6.0) for 15min; Block endogenous peroxidase by 3% hydrogen peroxide for 20 minutes; Blocking buffer (normal goat serum) at 37°C for 30min; Antibody incubation with (MTA3) Polyclonal Antibody, Unconjugated (bs-20028R) at 1:200 overnight at 4°C, followed by operating according to SP Kit(Rabbit) (sp-0023) instructions and DAB staining.



Paraformaldehyde-fixed, paraffin embedded (mouse kidney); Antigen retrieval by boiling in sodium citrate buffer (pH6.0) for 15min; Block endogenous peroxidase by 3% hydrogen peroxide for 20 minutes; Blocking buffer (normal goat serum) at 37°C for 30min; Antibody incubation with (MTA3) Polyclonal Antibody, Unconjugated (bs-20028R) at 1:200 overnight at 4°C, followed by operating according to SP Kit(Rabbit) (sp-0023) instructions and DAB staining.