

C16orf5 Polyclonal Antibody
Purified Rabbit Polyclonal Antibody (Pab)
Catalog # AP57784**Specification**

C16orf5 Polyclonal Antibody - Product Information

Application	IHC-P
Primary Accession	Q9H305
Reactivity	Rat, Dog, Bovine
Host	Rabbit
Clonality	Polyclonal
Calculated MW	21892

C16orf5 Polyclonal Antibody - Additional Information**Gene ID** 29965**Other Names**

Cell death-inducing p53-target protein 1, Cell death involved p53-target, Cell death-inducing protein, LITAF-like protein, Lipopolysaccharide-induced tumor necrosis factor-alpha-like protein, Transmembrane protein I1, CDIP1, C16orf5, CDIP, LITAF1

Format

0.01M TBS(pH7.4), 0.09% (W/V) sodium azide and 50% Glyce

Storage

Store at -20 °C for one year. Avoid repeated freeze/thaw cycles. When reconstituted in sterile pH 7.4 0.01M PBS or diluent of antibody the antibody is stable for at least two weeks at 2-4 °C.

C16orf5 Polyclonal Antibody - Protein Information**Name** CDIP1**Synonyms** C16orf5, CDIP, LITAF1**Function**

Acts as an important p53/TP53-apoptotic effector. Regulates TNF-alpha-mediated apoptosis in a p53/TP53-dependent manner.

Cellular Location

Late endosome membrane; Peripheral membrane protein; Cytoplasmic side. Lysosome membrane; Peripheral membrane protein; Cytoplasmic side

Tissue Location

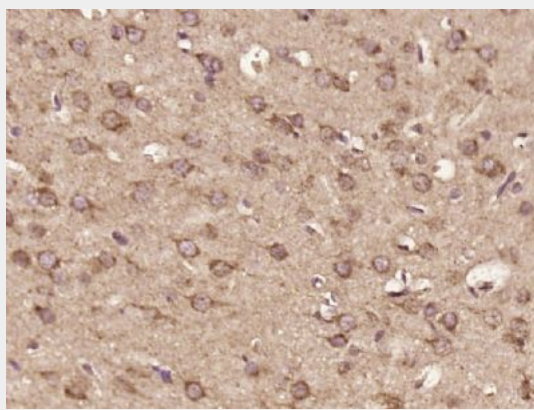
Highly expressed in brain. Expressed at lower level in heart, skeletal muscle, kidney, pancreas and liver. Weakly or not expressed in placenta and lung.

C16orf5 Polyclonal Antibody - Protocols

Provided below are standard protocols that you may find useful for product applications.

- [Western Blot](#)
- [Blocking Peptides](#)
- [Dot Blot](#)
- [Immunohistochemistry](#)
- [Immunofluorescence](#)
- [Immunoprecipitation](#)
- [Flow Cytometry](#)
- [Cell Culture](#)

C16orf5 Polyclonal Antibody - Images



Paraformaldehyde-fixed, paraffin embedded (Rat brain); Antigen retrieval by boiling in sodium citrate buffer (pH6.0) for 15min; Block endogenous peroxidase by 3% hydrogen peroxide for 20 minutes; Blocking buffer (normal goat serum) at 37°C for 30min; Antibody incubation with (C16orf5) Polyclonal Antibody, Unconjugated (bs-20282R) at 1:400 overnight at 4°C, followed by operating according to SP Kit(Rabbit) (sp-0023) instructions and DAB staining.