

AMPD1 Polyclonal Antibody
Purified Rabbit Polyclonal Antibody (Pab)
Catalog # AP57809

Specification

AMPD1 Polyclonal Antibody - Product Information

Application	IHC-P, IHC-F, IF, E
Primary Accession	Q3V1D3
Reactivity	Rat, Dog, Bovine
Host	Rabbit
Clonality	Polyclonal
Calculated MW	86 KDa
Physical State	Liquid
Immunogen	KLH conjugated synthetic peptide derived from mouse AMP deaminase 1
Epitope Specificity	101-200/745
Isotype	IgG
Purity	
affinity purified by Protein A	
Buffer	0.01M TBS (pH7.4) with 1% BSA, 0.02% Proclin300 and 50% Glycerol.
SIMILARITY	Belongs to the adenosine and AMP deaminases family.
SUBUNIT	Homotetramer
Important Note	This product as supplied is intended for research use only, not for use in human, therapeutic or diagnostic applications.

Background Descriptions

AMP deaminase (AMPD) is an allosteric enzyme that plays a critical role in energy metabolism. There are three functional isoforms of AMPD. AMPD1 is the skeletal muscle-specific isoform M located in type II muscle fibers, neuromuscular junctions and in capillaries. Defects in AMPD1 are the cause of adenosine monophosphate deaminase deficiency muscle type (AMPDDM). AMPDDM is a metabolic disorder resulting in exercise-related myopathy. It is characterized by exercise-induced muscle aches, cramps, and early fatigue.

AMPD1 Polyclonal Antibody - Additional Information

Gene ID 229665

Other Names

AMP deaminase 1, 3.5.4.6, AMP deaminase isoform M, Myoadenylate deaminase, Ampd1

Dilution

IHC-P~~N/A<br \>IHC-F~~N/A<br \>IF~~1:50~200<br \>E~~N/A

Format

0.01M TBS(pH7.4), 0.09% (W/V) sodium azide and 50% Glyce

Storage

Store at -20 °C for one year. Avoid repeated freeze/thaw cycles. When reconstituted in sterile pH 7.4 0.01M PBS or diluent of antibody the antibody is stable for at least two weeks at 2-4 °C.

AMPD1 Polyclonal Antibody - Protein Information

Name Ampd1 {ECO:0000312|MGI:MGI:88015}

Function

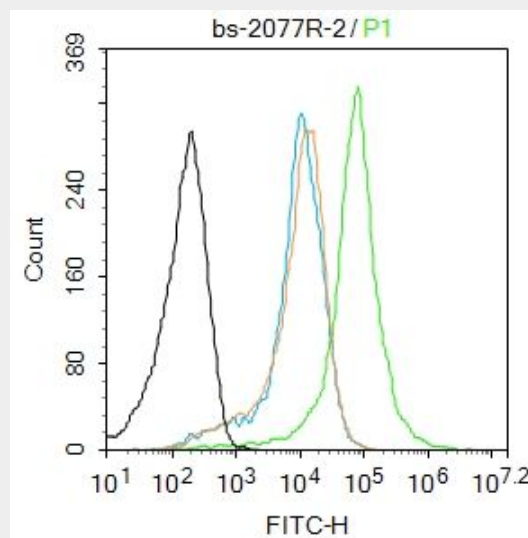
AMP deaminase plays a critical role in energy metabolism.

AMPD1 Polyclonal Antibody - Protocols

Provided below are standard protocols that you may find useful for product applications.

- [Western Blot](#)
- [Blocking Peptides](#)
- [Dot Blot](#)
- [Immunohistochemistry](#)
- [Immunofluorescence](#)
- [Immunoprecipitation](#)
- [Flow Cytometry](#)
- [Cell Culture](#)

AMPD1 Polyclonal Antibody - Images



Blank control: Mouse spleen.

Primary Antibody (green line): Rabbit Anti-AMPD1 antibody (bs-2077R)

Dilution: 2 µg /10⁶ cells;

Isotype Control Antibody (orange line): Rabbit IgG .

Secondary Antibody : Goat anti-rabbit IgG-AF488

Dilution: 1 µg /test.

Protocol

The cells were fixed with 70% ethanol (10min at room temperature) and then were incubated in 5%BSA to block non-specific protein-protein interactions for 30 min at room temperature .Cells stained with Primary Antibody for 30 min at room temperature. The secondary antibody used for 40 min at room temperature. Acquisition of 20,000 events was performed.