

**RAG1AP1 Polyclonal Antibody**  
**Purified Rabbit Polyclonal Antibody (Pab)**  
**Catalog # AP57810****Specification****RAG1AP1 Polyclonal Antibody - Product Information**

|                                |   |
|--------------------------------|---|
| Application                    | WB, IHC-P, IHC-F, IF, ICC, E  |
| Primary Accession              | <a href="#">Q9BRV3</a>  |
| Reactivity                     | Rat   |
| Host                           | Rabbit  |
| Clonality                      | Polyclonal  |
| Calculated MW                  | 25 KDa  |
| Physical State                 | Liquid  |
| Immunogen                      | KLH conjugated synthetic peptide derived from human RAG1AP1   |
| Epitope Specificity            | 101-200/221   |
| Isotype                        | IgG   |
| <b>Purity</b>                  |   |
| affinity purified by Protein A |   |
| Buffer                         | 0.01M TBS (pH7.4) with 1% BSA, 0.02% Proclin300 and 50% Glycerol.   |
| SUBCELLULAR LOCATION           | Golgi apparatus membrane. Cell membrane. May also localize to the endoplasmic reticulum.                                  |
| SIMILARITY                     | Belongs to the SWEET sugar transporter family. Contains 2 MtN3/slv domains  |
| Important Note                 | This product as supplied is intended for research use only, not for use in human, therapeutic or diagnostic applications. |

**RAG1AP1 Polyclonal Antibody - Additional Information****Gene ID** 55974**Other Names**

Sugar transporter SWEET1, HsSWEET1, RAG1-activating protein 1, Solute carrier family 50 member 1, Stromal cell protein, SLC50A1, RAG1AP1, SCP

**Target/Specificity**

Ubiquitously expressed with highest expression in oviduct, epididymis and intestine.

**Dilution**

<span class = "dilution\_WB">WB~~1:1000</span><br \><span class = "dilution\_IHC-P">IHC-P~~N/A</span><br \><span class = "dilution\_IHC-F">IHC-F~~N/A</span><br \><span class = "dilution\_IF">IF~~1:50~200</span><br \><span class = "dilution\_ICC">ICC~~N/A</span><br \><span class = "dilution\_E">E~~N/A</span>

**Format**

0.01M TBS(pH7.4), 0.09% (W/V) sodium azide and 50% Glyce

**Storage**

Store at -20 °C for one year. Avoid repeated freeze/thaw cycles. When reconstituted in sterile pH 7.4 0.01M PBS or diluent of antibody the antibody is stable for at least two weeks at 2-4 °C.

**RAG1AP1 Polyclonal Antibody - Protein Information**

**Name** SLC50A1

**Synonyms** RAG1AP1, SCP

**Function**

Mediates sugar transport across membranes. May stimulate V(D)J recombination by the activation of RAG1.

**Cellular Location**

Golgi apparatus membrane; Multi-pass membrane protein. Cell membrane; Multi-pass membrane protein. Note=May also localize to the endoplasmic reticulum.

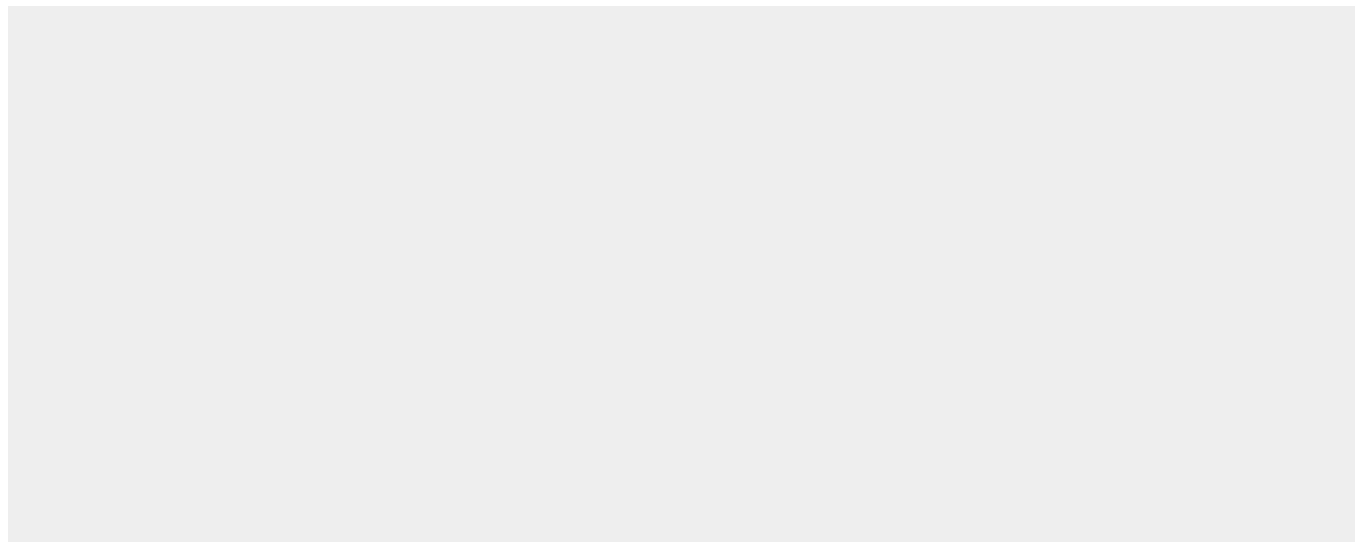
**Tissue Location**

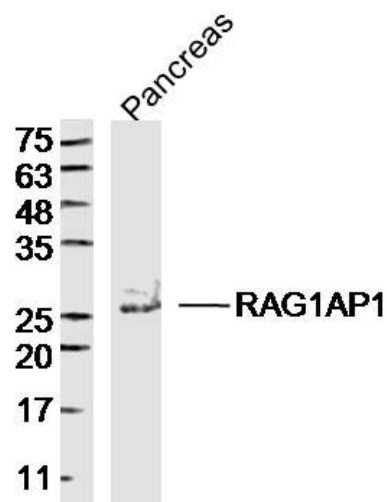
Ubiquitously expressed with highest expression in oviduct, epididymis and intestine.

**RAG1AP1 Polyclonal Antibody - Protocols**

Provided below are standard protocols that you may find useful for product applications.

- [Western Blot](#)
- [Blocking Peptides](#)
- [Dot Blot](#)
- [Immunohistochemistry](#)
- [Immunofluorescence](#)
- [Immunoprecipitation](#)
- [Flow Cytometry](#)
- [Cell Culture](#)

**RAG1AP1 Polyclonal Antibody - Images**



Sample: Pancreas (Mouse) Lysate at 40 ug  
Primary: Anti-RAG1AP1 (bs-20809R) at 1/300 dilution  
Secondary: IRDye800CW Goat Anti-Rabbit IgG at 1/20000 dilution  
Predicted band size: 25 kD  
Observed band size: 25 kD