

**SERPIN A11 Polyclonal Antibody**  
**Purified Rabbit Polyclonal Antibody (Pab)**  
**Catalog # AP57811****Specification****SERPIN A11 Polyclonal Antibody - Product Information**

Application	IHC-P, IHC-F, IF, ICC, E
Primary Accession	<a href="#">Q8CIE0</a>
Reactivity	Rat
Host	Rabbit
Clonality	Polyclonal
Calculated MW	45 KDa
Physical State	Liquid
Immunogen	KLH conjugated synthetic peptide derived from mouse SERPIN A11
Epitope Specificity	181-180/427
Isotype	IgG
<b>Purity</b>	
affinity purified by Protein A	
Buffer	<b>Preservative: 0.02% Proclin300,</b> <b>Constituents: 1% BSA, 0.01M PBS, pH7.4.</b>
SUBCELLULAR LOCATION	<b>Secreted.</b>
SIMILARITY	<b>Belongs to the serpin family.</b>
Important Note	<b>This product as supplied is intended for research use only, not for use in human, therapeutic or diagnostic applications.</b>

**SERPIN A11 Polyclonal Antibody - Additional Information****Gene ID** 380780**Other Names**

Serpina11, Serpina11, Gm895

**Dilution**

IHC-P ~ ~ N/A  
IHC-F ~ ~ N/A  
IF ~ ~ 1:50 ~ 200  
ICC ~ ~ N/A  
E ~ ~ N/A

**Format**

0.01M TBS(pH7.4), 0.09% (W/V) sodium azide and 50% Glyce

**Storage**

Store at -20 °C for one year. Avoid repeated freeze/thaw cycles. When reconstituted in sterile pH 7.4 0.01M PBS or diluent of antibody the antibody is stable for at least two weeks at 2-4 °C.

**SERPIN A11 Polyclonal Antibody - Protein Information**

**Name** Serpina11

**Synonyms** Gm895

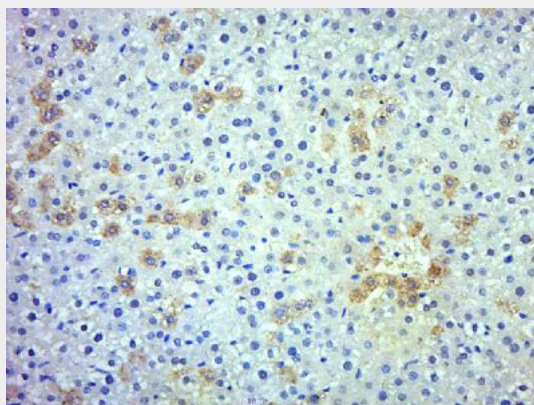
**Cellular Location**  
Secreted.

### **SERPIN A11 Polyclonal Antibody - Protocols**

Provided below are standard protocols that you may find useful for product applications.

- [Western Blot](#)
- [Blocking Peptides](#)
- [Dot Blot](#)
- [Immunohistochemistry](#)
- [Immunofluorescence](#)
- [Immunoprecipitation](#)
- [Flow Cytometry](#)
- [Cell Culture](#)

### **SERPIN A11 Polyclonal Antibody - Images**



Paraformaldehyde-fixed, paraffin embedded (Rat liver); Antigen retrieval by boiling in sodium citrate buffer (pH6.0) for 15min; Block endogenous peroxidase by 3% hydrogen peroxide for 20 minutes; Blocking buffer (normal goat serum) at 37°C for 30min; Antibody incubation with (SERPIN A11) Polyclonal Antibody, Unconjugated (bs-20816R) at 1:500 overnight at 4°C, followed by a conjugated secondary (sp-0023) for 20 minutes and DAB staining.