

SLIRP/C14orf156 Polyclonal Antibody
Purified Rabbit Polyclonal Antibody (Pab)
Catalog # AP57832**Specification**

SLIRP/C14orf156 Polyclonal Antibody - Product Information

| | |
|-------------------|-------------------------|
| Application | WB, IHC-P, IHC-F, IF, E |
| Primary Accession | O9GZT3 |
| Reactivity | Rat, Pig |
| Host | Rabbit |
| Clonality | Polyclonal |
| Calculated MW | 12349 |

SLIRP/C14orf156 Polyclonal Antibody - Additional Information**Gene ID** 81892**Other Names**

SRA stem-loop-interacting RNA-binding protein, mitochondrial, SLIRP, C14orf156

Dilution

WB~~1:1000<br \>IHC-P~~N/A<br \>IHC-F~~N/A<br \>IF~~1:50~200<br \>E~~N/A

Format

0.01M TBS(pH7.4), 0.09% (W/V) sodium azide and 50% Glyce

Storage

Store at -20 °C for one year. Avoid repeated freeze/thaw cycles. When reconstituted in sterile pH 7.4 0.01M PBS or diluent of antibody the antibody is stable for at least two weeks at 2-4 °C.

SLIRP/C14orf156 Polyclonal Antibody - Protein Information**Name** SLIRP**Synonyms** C14orf156**Function**

RNA-binding protein that acts as a nuclear receptor corepressor. Probably acts by binding the SRA RNA, and repressing the SRA-mediated nuclear receptor coactivation. Binds the STR7 loop of SRA RNA. Also able to repress glucocorticoid (GR), androgen (AR), thyroid (TR) and VDR-mediated transactivation.

Cellular Location

Mitochondrion. Nucleus. Note=Predominantly mitochondrial. Some fraction is nuclear. In the nucleus, it is recruited to nuclear receptor target promoters

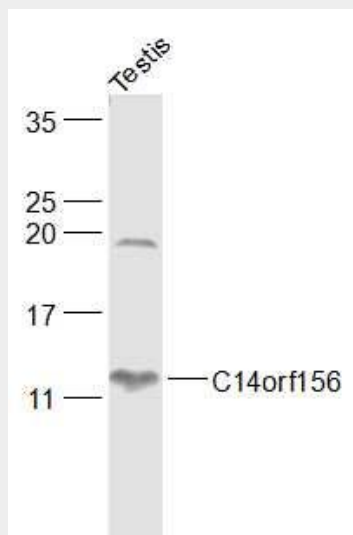
Tissue Location

Ubiquitously expressed, with highest level in heart, liver, skeletal muscle and testis

SLIRP/C14orf156 Polyclonal Antibody - Protocols

Provided below are standard protocols that you may find useful for product applications.

- [Western Blot](#)
- [Blocking Peptides](#)
- [Dot Blot](#)
- [Immunohistochemistry](#)
- [Immunofluorescence](#)
- [Immunoprecipitation](#)
- [Flow Cytometry](#)
- [Cell Culture](#)

SLIRP/C14orf156 Polyclonal Antibody - Images**Sample:**

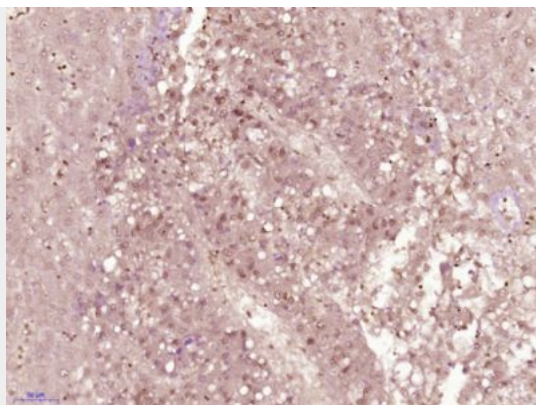
Testis (Mouse) Lysate at 40 ug

Primary: Anti-C14orf156 (bs-21033R) at 1/1000 dilution

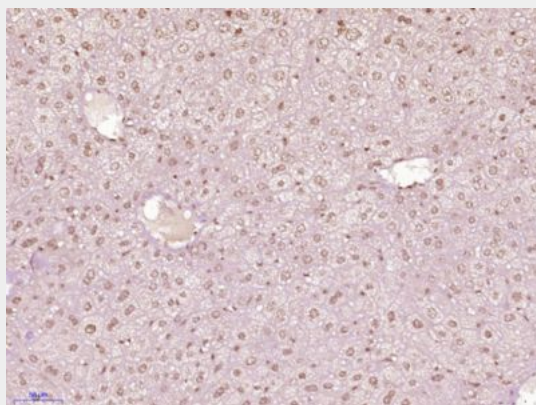
Secondary: IRDye800CW Goat Anti-Rabbit IgG at 1/20000 dilution

Predicted band size: 12 kD

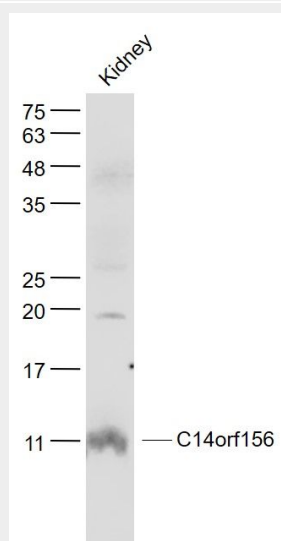
Observed band size: 12 kD



Paraformaldehyde-fixed, paraffin embedded (Human liver carcinoma); Antigen retrieval by boiling in sodium citrate buffer (pH6.0) for 15min; Block endogenous peroxidase by 3% hydrogen peroxide for 20 minutes; Blocking buffer (normal goat serum) at 37°C for 30min; Antibody incubation with (SLIRP/C14orf156) Polyclonal Antibody, Unconjugated (bs-21033R) at 1:400 overnight at 4°C, followed by operating according to SP Kit(Rabbit) (sp-0023) instructions and DAB staining.



Paraformaldehyde-fixed, paraffin embedded (Mouse liver); Antigen retrieval by boiling in sodium citrate buffer (pH6.0) for 15min; Block endogenous peroxidase by 3% hydrogen peroxide for 20 minutes; Blocking buffer (normal goat serum) at 37°C for 30min; Antibody incubation with (SLIRP/C14orf156) Polyclonal Antibody, Unconjugated (bs-21033R) at 1:400 overnight at 4°C, followed by operating according to SP Kit(Rabbit) (sp-0023) instructions and DAB staining.



Sample:

Kidney (Mouse) Lysate at 40 ug

Primary: Anti- SLIRP/C14orf156 (bs-21033R) at 1/1000 dilution

Secondary: IRDye800CW Goat Anti-Rabbit IgG at 1/20000 dilution

Predicted band size: 12 kD

Observed band size: 11 kD