

POU6F1/BRN5 Polyclonal Antibody
Purified Rabbit Polyclonal Antibody (Pab)
Catalog # AP57842

Specification

POU6F1/BRN5 Polyclonal Antibody - Product Information

Application	IHC-P, IHC-F, IF, ICC, E
Primary Accession	Q14863
Reactivity	Rat, Pig, Dog, Bovine
Host	Rabbit
Clonality	Polyclonal
Calculated MW	32 KDa
Physical State	Liquid
Immunogen	KLH conjugated synthetic peptide derived from human POU6F
Epitope Specificity	25-120/301
Isotype	IgG
Purity	
affinity purified by Protein A	
Buffer	0.01M TBS (pH7.4) with 1% BSA, 0.02% Proclin300 and 50% Glycerol.
SUBCELLULAR LOCATION	Nuclear.
SIMILARITY	Belongs to the POU transcription factor family. Class-6 subfamily. Contains 1 homeobox DNA-binding domain. Contains 1 POU-specific domain.
Important Note	This product as supplied is intended for research use only, not for use in human, therapeutic or diagnostic applications.

Background Descriptions

The POU6F1 gene encodes a protein that is part of a family of transcription factors which exhibit distinct temporal and spatial patterns of expression.

POU6F1/BRN5 Polyclonal Antibody - Additional Information

Gene ID 5463

Other Names

POU domain, class 6, transcription factor 1, Brain-specific homeobox/POU domain protein 5, Brain-5, Brn-5, mPOU homeobox protein, POU6F1, BRN5, MPOU, TCFB1

Target/Specificity

In the embryo, expressed exclusively in the developing brain, whereas in the adult its expression is restricted to brain, heart, skeletal muscle and lung. In the brain, the highest expression levels are found in specific cell layers of the cortex, the olfactory bulb, the hippocampus and the cerebellum.

Dilution

IHC-P~~N/A<br \>IHC-F~~N/A<br \>IF~~1:50~200<br \>ICC~~N/A<br \>E~~N/A

Storage

Store at -20 °C for one year. Avoid repeated freeze/thaw cycles. When reconstituted in sterile pH 7.4 0.01M PBS or diluent of antibody the antibody is stable for at least two weeks at 2-4 °C.

POU6F1/BRN5 Polyclonal Antibody - Protein Information

Name POU6F1

Synonyms BRN5, MPOU, TCFB1

Function

Transcription factor that binds preferentially to a variant of the octamer motif (5'-ATGATAAT-3').

Cellular Location

Nucleus {ECO:0000255|PROSITE-ProRule:PRU00108, ECO:0000255|PROSITE-ProRule:PRU00530}

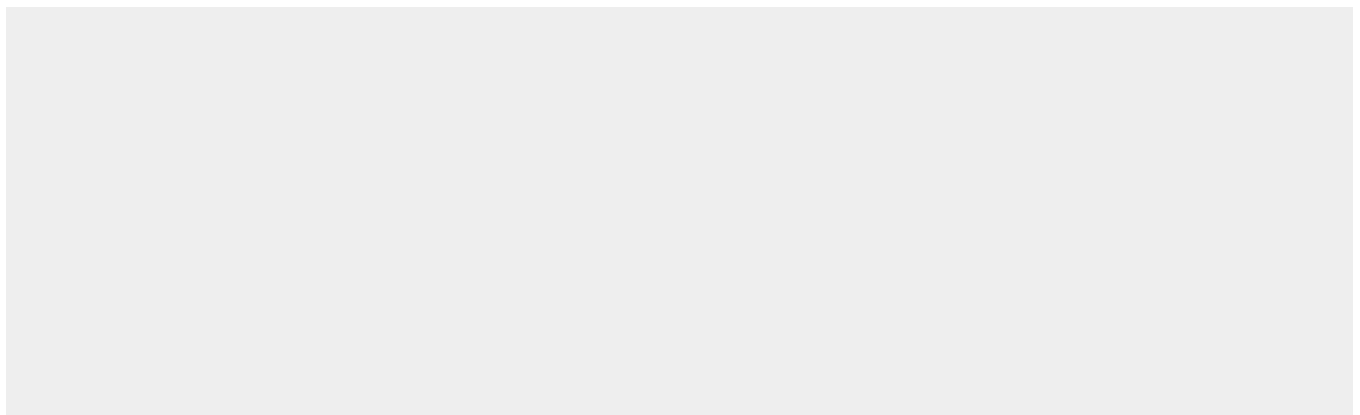
Tissue Location

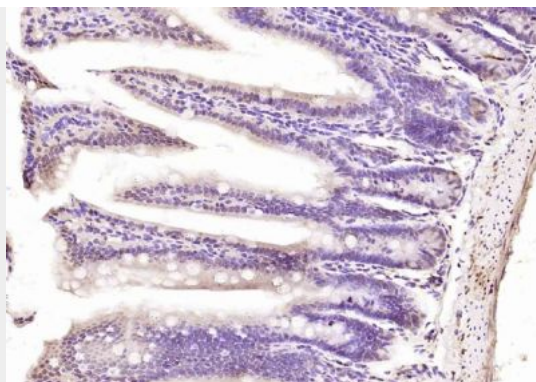
In the embryo, expressed exclusively in the developing brain, whereas in the adult its expression is restricted to brain, heart, skeletal muscle and lung. In the brain, the highest expression levels are found in specific cell layers of the cortex, the olfactory bulb, the hippocampus and the cerebellum

POU6F1/BRN5 Polyclonal Antibody - Protocols

Provided below are standard protocols that you may find useful for product applications.

- [Western Blot](#)
- [Blocking Peptides](#)
- [Dot Blot](#)
- [Immunohistochemistry](#)
- [Immunofluorescence](#)
- [Immunoprecipitation](#)
- [Flow Cytometry](#)
- [Cell Culture](#)

POU6F1/BRN5 Polyclonal Antibody - Images



Paraformaldehyde-fixed, paraffin embedded (mouse intestine); Antigen retrieval by boiling in sodium citrate buffer (pH6.0) for 15min; Block endogenous peroxidase by 3% hydrogen peroxide for 20 minutes; Blocking buffer (normal goat serum) at 37°C for 30min; Antibody incubation with (POU6F1) Polyclonal Antibody, Unconjugated (bs-21049R) at 1:200 overnight at 4°C, followed by operating according to SP Kit(Rabbit) (sp-0023) instructions and DAB staining.