

PAPD4 Polyclonal Antibody
Purified Rabbit Polyclonal Antibody (Pab)
Catalog # AP57855**Specification****PAPD4 Polyclonal Antibody - Product Information**

Application	IHC-P, IHC-F, IF, ICC, E
Primary Accession	Q6PIY7
Reactivity	Rat, Pig, Dog, Bovine
Host	Rabbit
Clonality	Polyclonal
Calculated MW	56 KDa
Physical State	Liquid
Immunogen	KLH conjugated synthetic peptide derived from human PAPD4
Epitope Specificity	31-130/484
Isotype	IgG
Purity	
affinity purified by Protein A	
Buffer	0.01M TBS (pH7.4) with 1% BSA, 0.02% Proclin300 and 50% Glycerol.
SUBCELLULAR LOCATION	Cytoplasm. Nucleus.
SIMILARITY	Belongs to the DNA polymerase type-B-like family. GLD2 subfamily. Contains 1 PAP-associated domain.
Important Note	This product as supplied is intended for research use only, not for use in human, therapeutic or diagnostic applications.

Background Descriptions

PAPD4 (Poly(A) RNA Polymerase D4, Non-Canonical) is a Protein Coding gene. GO annotations related to this gene include polynucleotide adenylyltransferase activity. An important paralog of this gene is ZCCHC6.

PAPD4 Polyclonal Antibody - Additional Information

Gene ID 167153

Other Names

Poly(A) RNA polymerase GLD2, hGLD-2, 2.7.7.19, PAP-associated domain-containing protein 4, Terminal nucleotidyltransferase 2 {ECO:0000312|HGNC:HGNC:26776}, Terminal uridylyltransferase 2, TUTase 2, TENT2 (http://www.genenames.org/cgi-bin/gene_symbol_report?hgnc_id=26776)

Target/Specificity

Expressed in brain. Within brain, it is expressed in cerebellum, hippocampus and medulla.

Dilution

IHC-P~~N/A<br \>IHC-F~~N/A<br \>IF~~1:50~200<br \>ICC~~N/A<br \>E~~N/A

Format

0.01M TBS(pH7.4), 0.09% (W/V) sodium azide and 50% Glyce

Storage

Store at -20 °C for one year. Avoid repeated freeze/thaw cycles. When reconstituted in sterile pH 7.4 0.01M PBS or diluent of antibody the antibody is stable for at least two weeks at 2-4 °C.

PAPD4 Polyclonal Antibody - Protein Information

Name TENT2 ([HGNC:26776](#))

Function

Cytoplasmic poly(A) RNA polymerase that adds successive AMP monomers to the 3'-end of specific RNAs, forming a poly(A) tail (PubMed:15070731, PubMed:31792053). In contrast to the canonical nuclear poly(A) RNA polymerase, it only adds poly(A) to selected cytoplasmic mRNAs (PubMed:15070731). Does not play a role in replication-dependent histone mRNA degradation (PubMed:18172165). Adds a single nucleotide to the 3' end of specific miRNAs, monoadenylation stabilizes and prolongs the activity of some but not all miRNAs (PubMed:23200856, PubMed:31792053).

Cellular Location

Cytoplasm {ECO:0000250|UniProtKB:Q91YI6}. Nucleus {ECO:0000250|UniProtKB:Q91YI6}

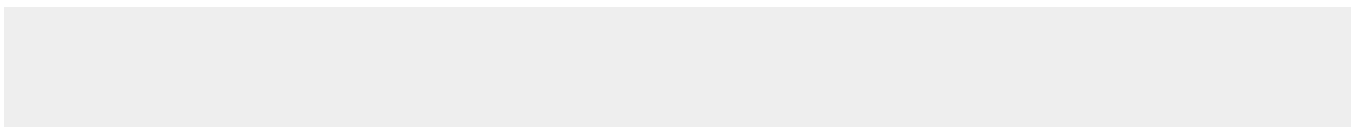
Tissue Location

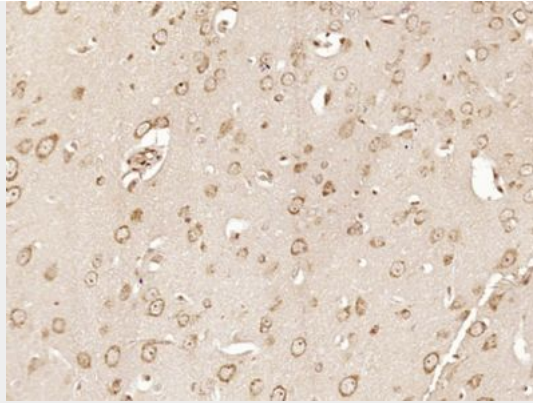
Expressed in brain. Within brain, it is expressed in cerebellum, hippocampus and medulla.

PAPD4 Polyclonal Antibody - Protocols

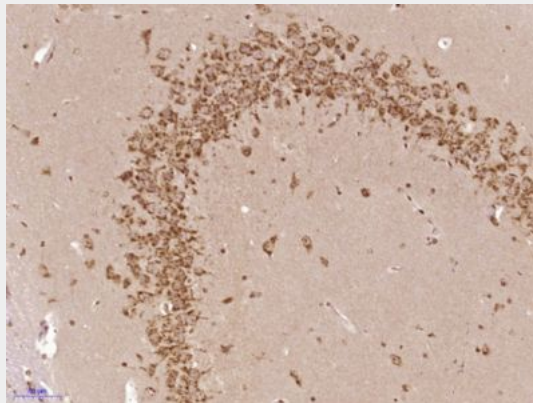
Provided below are standard protocols that you may find useful for product applications.

- [Western Blot](#)
- [Blocking Peptides](#)
- [Dot Blot](#)
- [Immunohistochemistry](#)
- [Immunofluorescence](#)
- [Immunoprecipitation](#)
- [Flow Cytometry](#)
- [Cell Culture](#)

PAPD4 Polyclonal Antibody - Images



Paraformaldehyde-fixed, paraffin embedded (Rat brain); Antigen retrieval by boiling in sodium citrate buffer (pH6.0) for 15min; Block endogenous peroxidase by 3% hydrogen peroxide for 20 minutes; Blocking buffer (normal goat serum) at 37°C for 30min; Antibody incubation with (PAPD4) Polyclonal Antibody, Unconjugated (bs-21076R) at 1:400 overnight at 4°C, followed by operating according to SP Kit(Rabbit) (sp-0023) instructions and DAB staining.



Paraformaldehyde-fixed, paraffin embedded (Mouse brain); Antigen retrieval by boiling in sodium citrate buffer (pH6.0) for 15min; Block endogenous peroxidase by 3% hydrogen peroxide for 20 minutes; Blocking buffer (normal goat serum) at 37°C for 30min; Antibody incubation with (PAPD4) Polyclonal Antibody, Unconjugated (bs-21076R) at 1:400 overnight at 4°C, followed by operating according to SP Kit(Rabbit) (sp-0023) instructions and DAB staining.