

PRCC/Papillary renal cell carcinoma Polyclonal Antibody
Purified Rabbit Polyclonal Antibody (Pab)
Catalog # AP57856**Specification****PRCC/Papillary renal cell carcinoma Polyclonal Antibody - Product Information**

Application	WB, IHC-P, IHC-F, IF, ICC, E
Primary Accession	Q92733
Reactivity	Rat, Pig, Bovine
Host	Rabbit
Clonality	Polyclonal
Calculated MW	52 KDa
Physical State	Liquid
Immunogen	KLH conjugated synthetic peptide derived from human PRCC
Epitope Specificity	401-491/491
Isotype	IgG
Purity	
affinity purified by Protein A	
Buffer	0.01M TBS (pH7.4) with 1% BSA, 0.02% Proclin300 and 50% Glycerol.
SUBCELLULAR LOCATION	Nucleus.
SUBUNIT	Interacts with MAD2L2; the interaction is direct.
DISEASE	Note=A chromosomal aberration involving PRCC is found in patients with papillary renal cell carcinoma. Translocation t(X;1)(p11.2;q21.2) with TFE3.
Important Note	This product as supplied is intended for research use only, not for use in human, therapeutic or diagnostic applications.

Background Descriptions

This gene encodes a protein that may play a role in pre-mRNA splicing. Chromosomal translocations (X;1)(p11;q21) that result in fusion of this gene to TFE3 (GeneID 7030) have been associated with papillary renal cell carcinoma. A PRCC-TFE3 fusion protein is expressed in affected carcinomas and is likely associated with altered gene transactivation. This fusion protein has also been associated with disruption of the cell cycle.[provided by RefSeq, Aug 2010]

PRCC/Papillary renal cell carcinoma Polyclonal Antibody - Additional Information**Gene ID** 5546**Other Names**

Proline-rich protein PRCC, Papillary renal cell carcinoma translocation-associated gene protein, PRCC, TPRC

Target/Specificity

Ubiquitous in fetal and adult tissues.

Dilution

WB~~1:1000<br \>IHC-P~~N/A<br \>IHC-F~~N/A<br \>IF~~1:50~200<br \>ICC~~N/A<br \>E~~N/A

Format

0.01M TBS(pH7.4), 0.09% (W/V) sodium azide and 50% Glyce

Storage

Store at -20 °C for one year. Avoid repeated freeze/thaw cycles. When reconstituted in sterile pH 7.4 0.01M PBS or diluent of antibody the antibody is stable for at least two weeks at 2-4 °C.

PRCC/Papillary renal cell carcinoma Polyclonal Antibody - Protein Information

Name PRCC

Synonyms TPRC

Function

May regulate cell cycle progression through interaction with MAD2L2.

Cellular Location

Nucleus.

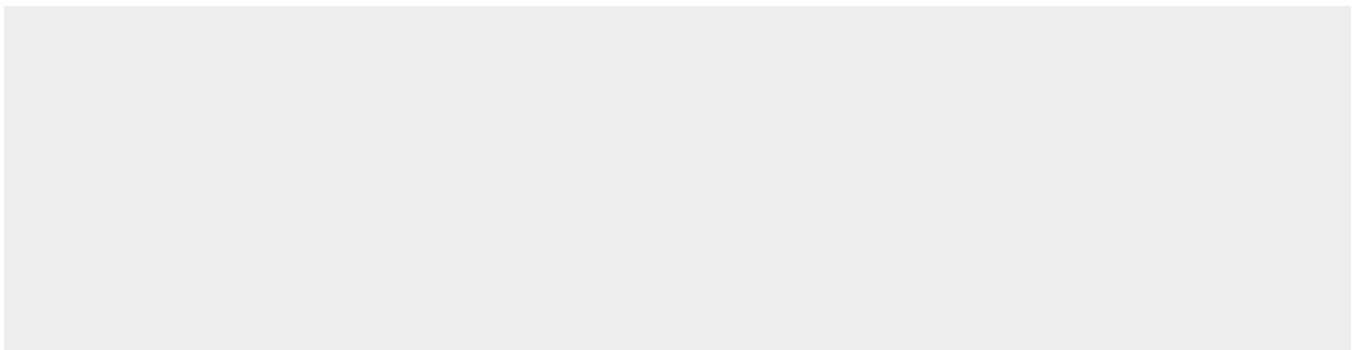
Tissue Location

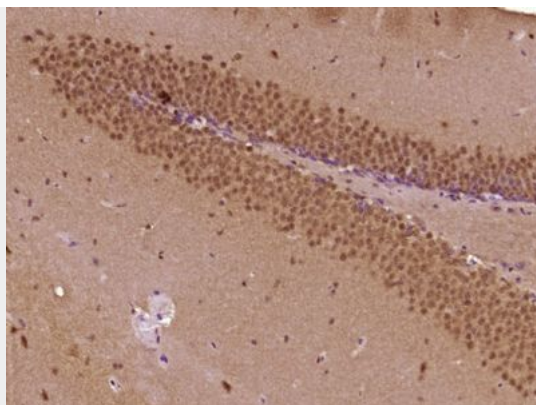
Ubiquitous in fetal and adult tissues.

PRCC/Papillary renal cell carcinoma Polyclonal Antibody - Protocols

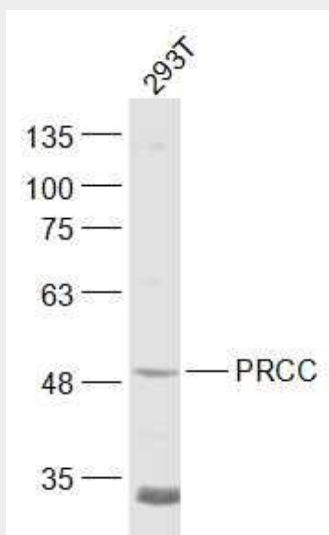
Provided below are standard protocols that you may find useful for product applications.

- [Western Blot](#)
- [Blocking Peptides](#)
- [Dot Blot](#)
- [Immunohistochemistry](#)
- [Immunofluorescence](#)
- [Immunoprecipitation](#)
- [Flow Cytometry](#)
- [Cell Culture](#)

PRCC/Papillary renal cell carcinoma Polyclonal Antibody - Images



Paraformaldehyde-fixed, paraffin embedded (Mouse brain); Antigen retrieval by boiling in sodium citrate buffer (pH6.0) for 15min; Block endogenous peroxidase by 3% hydrogen peroxide for 20 minutes; Blocking buffer (normal goat serum) at 37°C for 30min; Antibody incubation with (PRCC/Papillary renal cell carcinoma) Polyclonal Antibody, Unconjugated (bs-21077R) at 1:400 overnight at 4°C, followed by operating according to SP Kit(Rabbit) (sp-0023) instructions and DAB staining.



Sample:

293T(Human) Cell Lysate at 30 ug

Primary: Anti-PRCC (bs-21077R) at 1/1000 dilution

Secondary: IRDye800CW Goat Anti-Rabbit IgG at 1/20000 dilution

Predicted band size: 52 kD

Observed band size: 52 kD