

SERINC1 Polyclonal Antibody
Purified Rabbit Polyclonal Antibody (Pab)
Catalog # AP57869**Specification****SERINC1 Polyclonal Antibody - Product Information**

Application	WB, IHC-P, IHC-F, IF, ICC
Primary Accession	Q9NRX5
Reactivity	Rat, Pig, Dog, Bovine
Host	Rabbit
Clonality	Polyclonal
Calculated MW	50 KDa
Physical State	Liquid
Immunogen	KLH conjugated synthetic peptide derived from human SERINC1
Epitope Specificity	131-230/453
Isotype	IgG
Purity	
affinity purified by Protein A	
Buffer	Preservative: 0.02% Proclin300, Constituents: 1% BSA, 0.01M PBS, pH7.4.
SUBCELLULAR LOCATION	Endoplasmic reticulum membrane.
SIMILARITY	Belongs to the TDE1 family.
Important Note	This product as supplied is intended for research use only, not for use in human, therapeutic or diagnostic applications.

SERINC1 Polyclonal Antibody - Additional Information**Gene ID** 57515**Other Names**

Serine incorporator 1, Tumor differentially expressed protein 1-like, Tumor differentially expressed protein 2, SERINC1, KIAA1253, TDE1L, TDE2

Dilution

WB~~1:1000<br \>IHC-P~~N/A<br \>IHC-F~~N/A<br \>IF~~1:50~200<br \>ICC~~N/A

Format

0.01M TBS(pH7.4), 0.09% (W/V) sodium azide and 50% Glyce

Storage

Store at -20 °C for one year. Avoid repeated freeze/thaw cycles. When reconstituted in sterile pH 7.4 0.01M PBS or diluent of antibody the antibody is stable for at least two weeks at 2-4 °C.

SERINC1 Polyclonal Antibody - Protein Information

Name SERINC1

Synonyms KIAA1253, TDE1L, TDE2

Function

Enhances the incorporation of serine into phosphatidylserine and sphingolipids.

Cellular Location

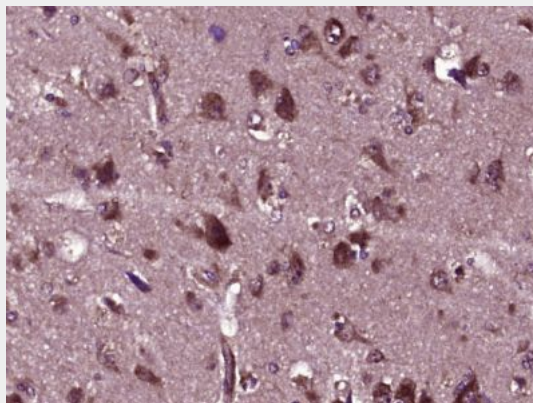
Endoplasmic reticulum membrane {ECO:0000250|UniProtKB:Q7TNK0}; Multi-pass membrane protein {ECO:0000250|UniProtKB:Q7TNK0}

SERINC1 Polyclonal Antibody - Protocols

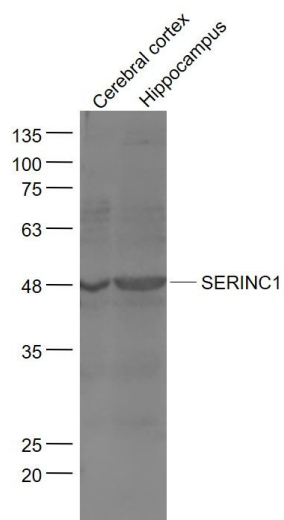
Provided below are standard protocols that you may find useful for product applications.

- [Western Blot](#)
- [Blocking Peptides](#)
- [Dot Blot](#)
- [Immunohistochemistry](#)
- [Immunofluorescence](#)
- [Immunoprecipitation](#)
- [Flow Cytometry](#)
- [Cell Culture](#)

SERINC1 Polyclonal Antibody - Images



Paraformaldehyde-fixed, paraffin embedded (human brain glioma); Antigen retrieval by boiling in sodium citrate buffer (pH6.0) for 15min; Block endogenous peroxidase by 3% hydrogen peroxide for 20 minutes; Blocking buffer (normal goat serum) at 37°C for 30min; Antibody incubation with (SERINC1) Polyclonal Antibody, Unconjugated (bs-21099R) at 1:400 overnight at 4°C, followed by operating according to SP Kit(Rabbit) (sp-0023) instructions and DAB staining.



Sample:

Cerebral cortex (Mouse) Lysate at 40 ug

Hippocampus (Mouse) Lysate at 40 ug

Primary: Anti- SERINC1 (bs-21099R) at 1/1000 dilution

Secondary: IRDye800CW Goat Anti-Rabbit IgG at 1/20000 dilution

Predicted band size: 50 kD

Observed band size: 48 kD