

RAD21L1 Polyclonal Antibody
Purified Rabbit Polyclonal Antibody (Pab)
Catalog # AP57896**Specification****RAD21L1 Polyclonal Antibody - Product Information**

| | |
|--------------------------------|---|
| Application | IHC-P, IHC-F, IF, ICC, E |
| Primary Accession | Q9H4I0 |
| Reactivity | Rat |
| Host | Rabbit |
| Clonality | Polyclonal |
| Calculated MW | 63 KDa |
| Physical State | Liquid |
| Immunogen | KLH conjugated synthetic peptide derived from human RAD21L1 |
| Epitope Specificity | 101-200/556 |
| Isotype | IgG |
| Purity | |
| affinity purified by Protein A | |
| Buffer | Preservative: 0.02% Proclin300, Constituents: 1% BSA, 0.01M PBS, pH7.4. |
| SUBCELLULAR LOCATION | Nucleus. Chromosome. Note: In meiotic chromosomes, localized along axial elements in early meiosis: detectable on the axial elements in leptotene, and stays on the axial/lateral elements until mid pachytene. It then disappears and is replaced with RAD21. Compared to REC8, has mutually exclusive loading sites on the chromosomes: REC8 and RAD21L form distinct cohesin-enriched domains along the axial elements. |
| SIMILARITY | Belongs to the rad21 family. |
| SUBUNIT | Component of some meiotic cohesin complex composed of the SMC1 (SMC1A or SMC1B) and SMC3 heterodimer attached via their hinge domain, RAD21L which link them, and STAG3. |
| Important Note | This product as supplied is intended for research use only, not for use in human, therapeutic or diagnostic applications. |

Background Descriptions

Function: Meiosis-specific component of some cohesin complex. Probably required during early meiosis for separation of sister chromatids and homologous chromosomes. Replaces RAD21 in premeiotic S phase (during early stages of prophase I), while RAD21 reappears in later stages of prophase I. May be involved in synapsis initiation and crossover recombination between homologous chromosomes. Subunit structure: Component of some meiotic cohesin complex composed of the SMC1 (SMC1A or SMC1B) and SMC3 heterodimer attached via their hinge domain, RAD21L which link them, and STAG3. Sequence similarities Belongs to the rad21 family.

RAD21L1 Polyclonal Antibody - Additional Information

Gene ID 642636

Other Names

Double-strand-break repair protein rad21-like protein 1, RAD21L1, RAD21L

Target/Specificity

Specifically expressed in male and female gonads (at protein level).

Dilution

IHC-P ~ ~ N/A
IHC-F ~ ~ N/A
IF ~ ~ 1:50 ~ 200
ICC ~ ~ N/A
E ~ ~ N/A

Format

0.01M TBS(pH7.4), 0.09% (W/V) sodium azide and 50% Glyce

Storage

Store at -20 °C for one year. Avoid repeated freeze/thaw cycles. When reconstituted in sterile pH 7.4 0.01M PBS or diluent of antibody the antibody is stable for at least two weeks at 2-4 °C.

RAD21L1 Polyclonal Antibody - Protein Information

Name RAD21L1

Synonyms RAD21L

Function

Meiosis-specific component of some cohesin complex required during the initial steps of prophase I in male meiosis. Probably required during early meiosis in males for separation of sister chromatids and homologous chromosomes. Replaces RAD21 in premeiotic S phase (during early stages of prophase I), while RAD21 reappears in later stages of prophase I. Involved in synaptonemal complex assembly, synapsis initiation and crossover recombination between homologous chromosomes during prophase I (By similarity).

Cellular Location

Nucleus {ECO:0000250|UniProtKB:A2AU37}. Chromosome {ECO:0000250|UniProtKB:A2AU37}. Note=In meiotic chromosomes, localized along axial elements in early meiosis: detectable on the axial elements in leptotene, and stays on the axial/lateral elements until mid pachytene. It then disappears and is replaced with RAD21 Compared to REC8, has mutually exclusive loading sites on the chromosomes: REC8 and RAD21L form distinct cohesin-enriched domains along the axial elements. {ECO:0000250|UniProtKB:A2AU37}

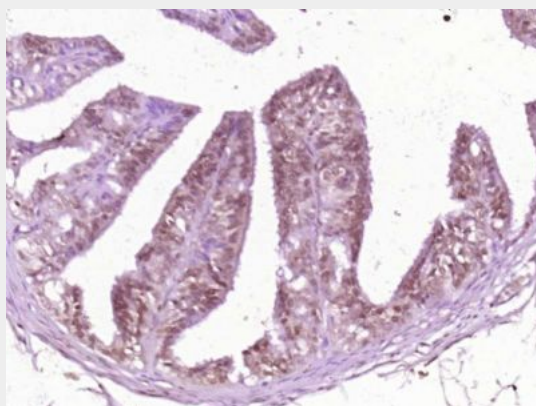
RAD21L1 Polyclonal Antibody - Protocols

Provided below are standard protocols that you may find useful for product applications.

- [Western Blot](#)
- [Blocking Peptides](#)

- [Dot Blot](#)
- [Immunohistochemistry](#)
- [Immunofluorescence](#)
- [Immunoprecipitation](#)
- [Flow Cytometry](#)
- [Cell Culture](#)

RAD21L1 Polyclonal Antibody - Images



Paraformaldehyde-fixed, paraffin embedded (Rat ovary); Antigen retrieval by boiling in sodium citrate buffer (pH6.0) for 15min; Block endogenous peroxidase by 3% hydrogen peroxide for 20 minutes; Blocking buffer (normal goat serum) at 37°C for 30min; Antibody incubation with (RAD21L1) Polyclonal Antibody, Unconjugated (bs-21139R) at 1:400 overnight at 4°C, followed by operating according to SP Kit(Rabbit) (sp-0023) instructions and DAB staining.