

RAP1GAP2 Polyclonal Antibody
Purified Rabbit Polyclonal Antibody (Pab)
Catalog # AP57905

Specification

RAP1GAP2 Polyclonal Antibody - Product Information

Application	WB, IHC-P, IHC-F, IF, ICC, E
Primary Accession	Q684P5
Reactivity	Rat
Host	Rabbit
Clonality	Polyclonal
Calculated MW	80 KDa
Physical State	Liquid
Immunogen	KLH conjugated synthetic peptide derived from human RAP1GAP2
Epitope Specificity	651-730/730
Isotype	IgG
Purity	
affinity purified by Protein A	
Buffer	Preservative: 0.02% Proclin300, Constituents: 1% BSA, 0.01M PBS, pH7.4.
SIMILARITY	Contains 1 RanBD1 domain.
Important Note	This product as supplied is intended for research use only, not for use in human, therapeutic or diagnostic applications.

Background Descriptions

This gene encodes a GTPase-activating protein that activates the small guanine-nucleotide-binding protein Rap1 in platelets. The protein interacts with synaptotagmin-like protein 1 and Rab27 and regulates secretion of dense granules from platelets at sites of endothelial damage. Multiple transcript variants encoding different isoforms have been found for this gene. [provided by RefSeq, Sep 2009]

RAP1GAP2 Polyclonal Antibody - Additional Information

Gene ID 23108

Other Names

Rap1 GTPase-activating protein 2, Rap1GAP2, GTPase-activating Rap/Ran-GAP domain-like protein 4, RAP1GAP2, GARNL4, KIAA1039, RAP1GA2

Target/Specificity

Cytoplasmic; perinuclear region.

Dilution

WB~~1:1000<br \>IHC-P~~N/A<br \>IHC-F~~N/A<br \>IF~~1:50~200<br \>ICC~~N/A<br \>

\>E~~N/A

Format

0.01M TBS(pH7.4), 0.09% (W/V) sodium azide and 50% Glyce

Storage

Store at -20 °C for one year. Avoid repeated freeze/thaw cycles. When reconstituted in sterile pH 7.4 0.01M PBS or diluent of antibody the antibody is stable for at least two weeks at 2-4 °C.

RAP1GAP2 Polyclonal Antibody - Protein Information

Name RAP1GAP2

Synonyms GARNL4, KIAA1039, RAP1GA2

Function

GTPase activator for the nuclear Ras-related regulatory protein RAP-1A (KREV-1), converting it to the putatively inactive GDP- bound state.

Cellular Location

Cytoplasm. Cytoplasm, perinuclear region

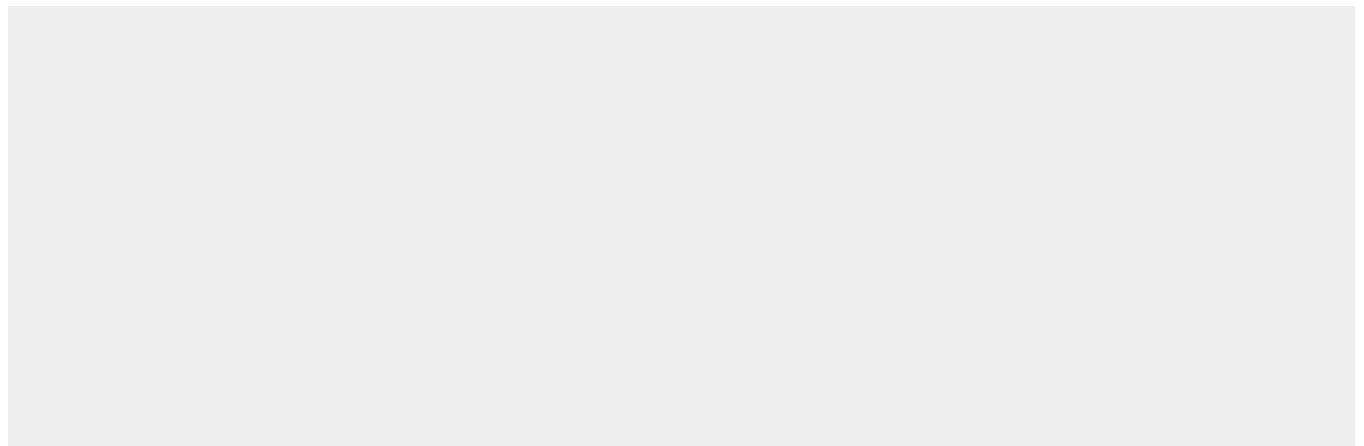
Tissue Location

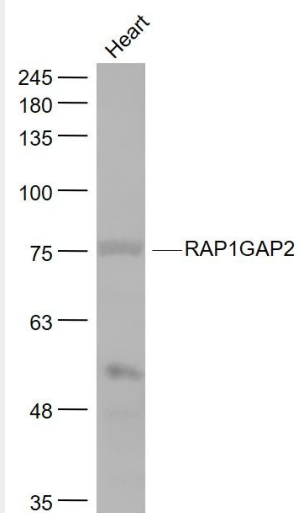
Isoform 1 and isoform 2 are expressed in platelets with isoform 2 being the predominant form. Expressed in lymphocytes, heart, testis and pancreas.

RAP1GAP2 Polyclonal Antibody - Protocols

Provided below are standard protocols that you may find useful for product applications.

- [Western Blot](#)
- [Blocking Peptides](#)
- [Dot Blot](#)
- [Immunohistochemistry](#)
- [Immunofluorescence](#)
- [Immunoprecipitation](#)
- [Flow Cytometry](#)
- [Cell Culture](#)

RAP1GAP2 Polyclonal Antibody - Images



Sample:

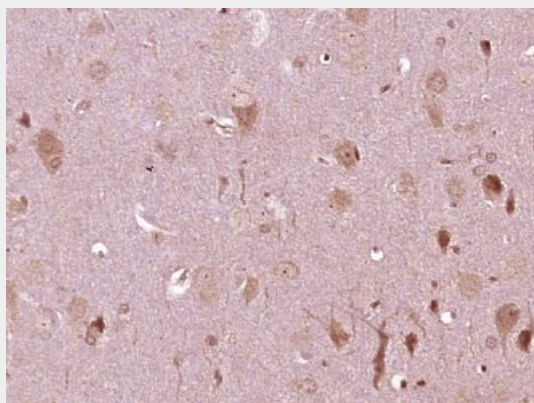
Heart (Mouse) Lysate at 40 ug

Primary: Anti- RAP1GAP2 (bs-21155R) at 1/1000 dilution

Secondary: IRDye800CW Goat Anti-Rabbit IgG at 1/20000 dilution

Predicted band size: 80 kD

Observed band size: 76 kD



Paraformaldehyde-fixed, paraffin embedded (rat brain tissue); Antigen retrieval by boiling in sodium citrate buffer (pH6.0) for 15min; Block endogenous peroxidase by 3% hydrogen peroxide for 20 minutes; Blocking buffer (normal goat serum) at 37°C for 30min; Antibody incubation with (RAP1GAP2) Polyclonal Antibody, Unconjugated (bs-21155R) at 1:400 overnight at 4°C, followed by operating according to SP Kit(Rabbit) (sp-0023) instructions and DAB staining.