

RASL10B Polyclonal Antibody
Purified Rabbit Polyclonal Antibody (Pab)
Catalog # AP57909**Specification**

RASL10B Polyclonal Antibody - Product Information

Application	WB
Primary Accession	Q96S79
Reactivity	Rat, Dog, Bovine
Host	Rabbit
Clonality	Polyclonal
Calculated MW	23229

RASL10B Polyclonal Antibody - Additional Information**Gene ID** 91608**Other Names**

Ras-like protein family member 10B, 3.6.5.2, Ras-like protein VTS58635, Ras-related protein 17, RRP17, RASL10B

Format

0.01M TBS(pH7.4), 0.09% (W/V) sodium azide and 50% Glyce

Storage

Store at -20 °C for one year. Avoid repeated freeze/thaw cycles. When reconstituted in sterile pH 7.4 0.01M PBS or diluent of antibody the antibody is stable for at least two weeks at 2-4 °C.

RASL10B Polyclonal Antibody - Protein Information**Name** RASL10B**Function**

May facilitate the release of atrial natriuretic peptide by cardiomyocytes and hence play a role in the regulation of arterial pressure.

Cellular Location

Cell membrane; Lipid-anchor; Cytoplasmic side

Tissue Location

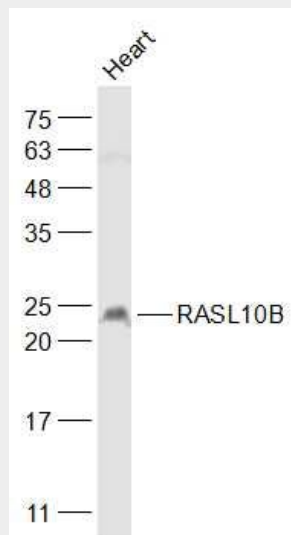
Expressed at high levels in skeletal muscle and, at much lower levels, in heart, brain and pancreas

RASL10B Polyclonal Antibody - Protocols

Provided below are standard protocols that you may find useful for product applications.

- [Western Blot](#)
- [Blocking Peptides](#)
- [Dot Blot](#)
- [Immunohistochemistry](#)
- [Immunofluorescence](#)
- [Immunoprecipitation](#)
- [Flow Cytometry](#)
- [Cell Culture](#)

RASL10B Polyclonal Antibody - Images



Sample:

Heart (Mouse) Lysate at 40 ug

Primary: Anti-RASL10B (bs-21163R) at 1/1000 dilution

Secondary: IRDye800CW Goat Anti-Rabbit IgG at 1/20000 dilution

Predicted band size: 23 kD

Observed band size: 23 kD