

SH3BGRL3 Polyclonal Antibody

Purified Rabbit Polyclonal Antibody (Pab)

Catalog # AP57911

Specification

SH3BGRL3 Polyclonal Antibody - Product Information

Application	IHC-P, IHC-F, IF, ICC
Primary Accession	Q9H299
Reactivity	Rat, Dog, Bovine
Host	Rabbit
Clonality	Polyclonal
Calculated MW	11 KDa
Physical State	Liquid
Immunogen	KLH conjugated synthetic peptide derived from human SH3BGRL3
Epitope Specificity	31-93//93
Isotype	IgG
Purity	
affinity purified by Protein A	
Buffer	Preservative: 0.02% Proclin300, Constituents: 1% BSA, 0.01M PBS, pH7.4.
SUBCELLULAR LOCATION	Cytoplasm. Nucleus.
SIMILARITY	Belongs to the SH3BGR family. Contains 1 glutaredoxin domain.
Important Note	This product as supplied is intended for research use only, not for use in human, therapeutic or diagnostic applications.

Background Descriptions

SH3BGRL3 (SH3 Domain Binding Glutamate Rich Protein Like 3) is a Protein Coding gene. GO annotations related to this gene include GTPase activator activity and protein disulfide oxidoreductase activity. An important paralog of this gene is SH3BGRL2.

SH3BGRL3 Polyclonal Antibody - Additional Information

Gene ID 83442

Other Names

SH3 domain-binding glutamic acid-rich-like protein 3, SH3 domain-binding protein 1, SH3BP-1, SH3BGRL3

Target/Specificity

Ubiquitous.

Dilution

IHC-P~~N/A<br \>IHC-F~~N/A<br \>IF~~1:50~200<br \>ICC~~N/A

Format

0.01M TBS(pH7.4), 0.09% (W/V) sodium azide and 50% Glyce

Storage

Store at -20 °C for one year. Avoid repeated freeze/thaw cycles. When reconstituted in sterile pH 7.4 0.01M PBS or diluent of antibody the antibody is stable for at least two weeks at 2-4 °C.

SH3BGRL3 Polyclonal Antibody - Protein Information

Name SH3BGRL3

Function

Could act as a modulator of glutaredoxin biological activity (Probable). May play a role in cytoskeleton organization (PubMed:34380438).

Cellular Location

Cytoplasm, cytosol. Cell projection, ruffle membrane. Nucleus

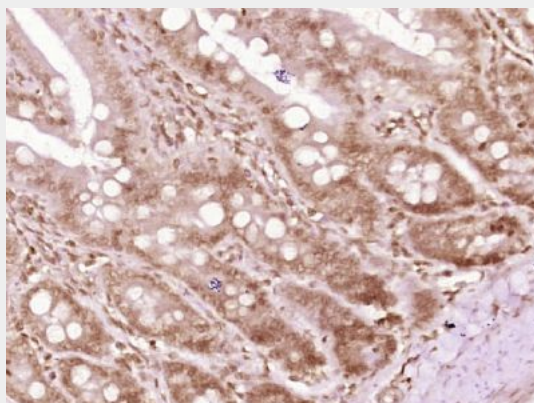
Tissue Location

Ubiquitous (PubMed:11404387, PubMed:11444877). Expressed in heart, kidney and liver (at protein level) (PubMed:11404387). Expressed in brain, lung, spleen and skeletal muscle (PubMed:11404387).

SH3BGRL3 Polyclonal Antibody - Protocols

Provided below are standard protocols that you may find useful for product applications.

- [Western Blot](#)
- [Blocking Peptides](#)
- [Dot Blot](#)
- [Immunohistochemistry](#)
- [Immunofluorescence](#)
- [Immunoprecipitation](#)
- [Flow Cytometry](#)
- [Cell Culture](#)

SH3BGRL3 Polyclonal Antibody - Images

Paraformaldehyde-fixed, paraffin embedded (rat colon tissue); Antigen retrieval by boiling in sodium citrate buffer (pH6.0) for 15min; Block endogenous peroxidase by 3% hydrogen peroxide for 20 minutes; Blocking buffer (normal goat serum) at 37°C for 30min; Antibody incubation with (SH3BGRL3) Polyclonal Antibody, Unconjugated (bs-21171R) at 1:400 overnight at 4°C, followed by operating according to SP Kit(Rabbit) (sp-0023) instructions and DAB staining.