

RALGPS2 Polyclonal Antibody
Purified Rabbit Polyclonal Antibody (Pab)
Catalog # AP57915

Specification

RALGPS2 Polyclonal Antibody - Product Information

Application	IHC-P, IHC-F, IF, ICC
Primary Accession	Q86X27
Reactivity	Rat, Pig, Dog, Bovine
Host	Rabbit
Clonality	Polyclonal
Calculated MW	65 KDa
Physical State	Liquid
Immunogen	KLH conjugated synthetic peptide derived from human RALGPS2
Epitope Specificity	481-583/583
Isotype	IgG
Purity	
affinity purified by Protein A	
Buffer	Preservative: 0.02% Proclin300, Constituents: 1% BSA, 0.01M PBS, pH7.4.
SUBCELLULAR LOCATION	Cell Membrane and Cytoplasmic. Associates with membranes through the PH domain.
SUBUNIT	Interacts with the SH3 domains of GRB2 and PLCG1. Interacts with RALA.
DISEASE	RALGPS2 is a potential candidate gene for susceptibility to Alzheimer disease linked to 1q24.
Important Note	This product as supplied is intended for research use only, not for use in human, therapeutic or diagnostic applications.

Background Descriptions

RalGPS2 (Ral GEF with PH domain and SH3 binding motif 2) is a guanine nucleotide exchange factor for RalA GTPase. It is expressed in testis and brain.

RALGPS2 Polyclonal Antibody - Additional Information

Gene ID 55103

Other Names

Ras-specific guanine nucleotide-releasing factor RalGPS2, Ral GEF with PH domain and SH3-binding motif 2, RalA exchange factor RalGPS2, RALGPS2

Dilution

IHC-P ~ ~ N/A
IHC-F ~ ~ N/A
IF ~ ~ 1:50 ~ 200
ICC ~ ~ N/A

Format

0.01M TBS(pH7.4), 0.09% (W/V) sodium azide and 50% Glyce

Storage

Store at -20 °C for one year. Avoid repeated freeze/thaw cycles. When reconstituted in sterile pH 7.4 0.01M PBS or diluent of antibody the antibody is stable for at least two weeks at 2-4 °C.

RALGPS2 Polyclonal Antibody - Protein Information

Name RALGPS2

Function

Guanine nucleotide exchange factor for the small GTPase RALA. May be involved in cytoskeletal organization. May also be involved in the stimulation of transcription in a Ras-independent fashion (By similarity).

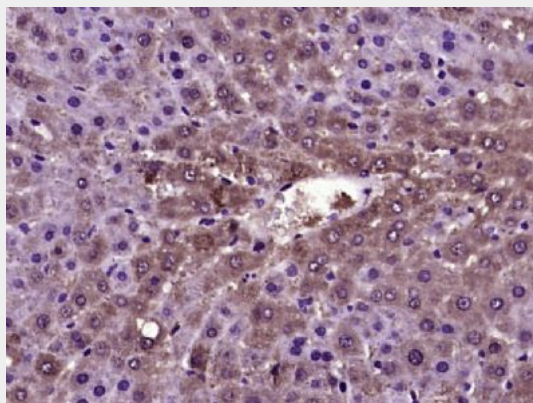
Cellular Location

Cytoplasm. Cell membrane. Note=Associates with membranes through the PH domain

RALGPS2 Polyclonal Antibody - Protocols

Provided below are standard protocols that you may find useful for product applications.

- [Western Blot](#)
- [Blocking Peptides](#)
- [Dot Blot](#)
- [Immunohistochemistry](#)
- [Immunofluorescence](#)
- [Immunoprecipitation](#)
- [Flow Cytometry](#)
- [Cell Culture](#)

RALGPS2 Polyclonal Antibody - Images

Paraformaldehyde-fixed, paraffin embedded (rat liver tissue); Antigen retrieval by boiling in sodium citrate buffer (pH6.0) for 15min; Block endogenous peroxidase by 3% hydrogen peroxide for 20 minutes; Blocking buffer (normal goat serum) at 37°C for 30min; Antibody incubation with (RALGPS2) Polyclonal Antibody, Unconjugated (bs-21178R) at 1:400 overnight at 4°C, followed by operating according to SP Kit(Rabbit) (sp-0023) instructions and DAB staining.

