

SLC16A9 Polyclonal Antibody
Purified Rabbit Polyclonal Antibody (Pab)
Catalog # AP57922**Specification****SLC16A9 Polyclonal Antibody - Product Information**

Application	WB, IHC-P, IHC-F, IF, ICC, E
Primary Accession	Q7RTY1
Reactivity	Rat, Pig, Dog, Bovine
Host	Rabbit
Clonality	Polyclonal
Calculated MW	56 KDa
Physical State	Liquid
Immunogen	KLH conjugated synthetic peptide derived from human SLC16A9
Epitope Specificity	221-320/509
Isotype	IgG
Purity	
affinity purified by Protein A	
Buffer	Preservative: 0.02% Proclin300, Constituents: 1% BSA, 0.01M PBS, pH7.4.
SUBCELLULAR LOCATION	Cell membrane.
SIMILARITY	Belongs to the major facilitator superfamily. Monocarboxylate porter (TC 2.A.1.13) family.
Important Note	This product as supplied is intended for research use only, not for use in human, therapeutic or diagnostic applications.

Background Descriptions

SLC16A9 (Solute Carrier Family 16 Member 9) is a Protein Coding gene. Diseases associated with SLC16A9 include Gout. GO annotations related to this gene include symporter activity and monocarboxylic acid transmembrane transporter activity. An important paralog of this gene is SLC16A14.

SLC16A9 Polyclonal Antibody - Additional Information**Gene ID** 220963**Other Names**

Monocarboxylate transporter 9, MCT 9, Solute carrier family 16 member 9, SLC16A9, C10orf36, MCT9

Dilution

WB~~1:1000<br \>IHC-P~~N/A<br \>IHC-F~~N/A<br \>IF~~1:50~200<br \>ICC~~N/A<br \>E~~N/A

Format

0.01M TBS(pH7.4), 0.09% (W/V) sodium azide and 50% Glyce

Storage

Store at -20 °C for one year. Avoid repeated freeze/thaw cycles. When reconstituted in sterile pH 7.4 0.01M PBS or diluent of antibody the antibody is stable for at least two weeks at 2-4 °C.

SLC16A9 Polyclonal Antibody - Protein Information

Name SLC16A9 ([HGNC:23520](#))

Synonyms C10orf36, MCT9

Function

Extracellular pH-and Na(+)-sensitive low-affinity creatine transporter (PubMed:31784090). Also functions as a pH-independent carnitine efflux transporter (PubMed:21886157).

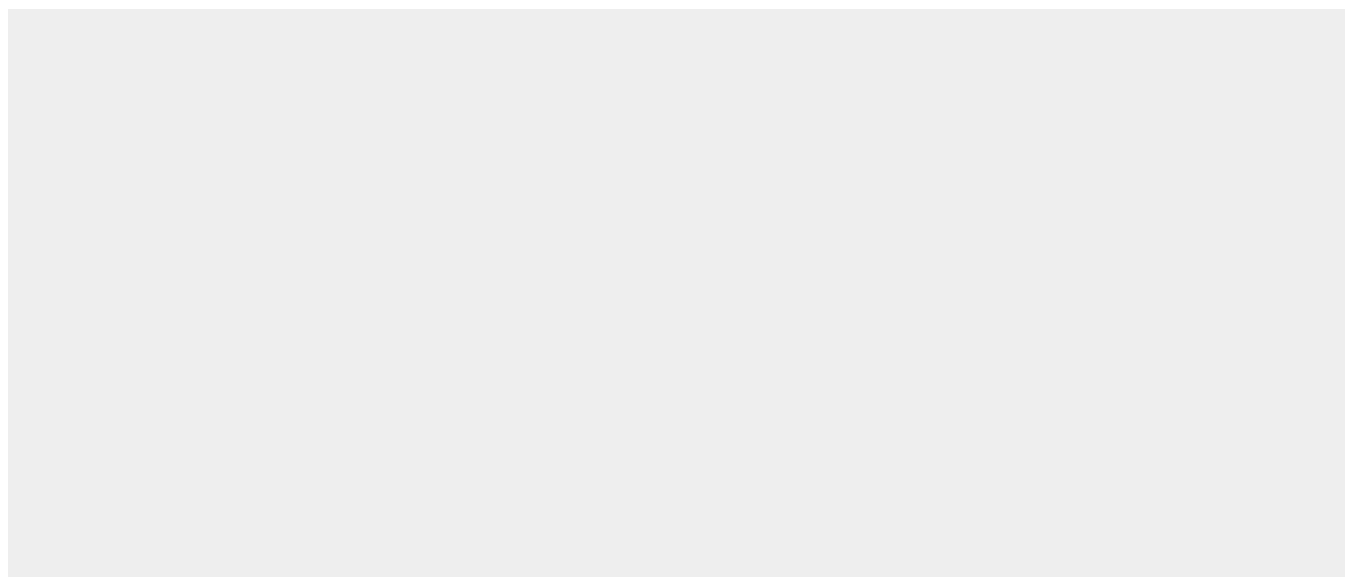
Cellular Location

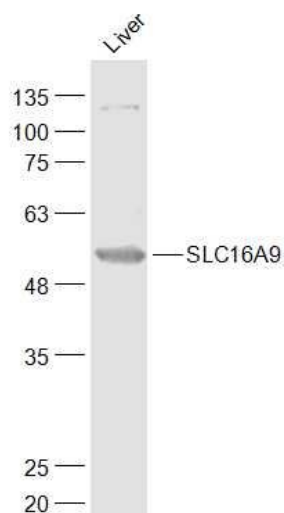
Cell membrane; Multi-pass membrane protein

SLC16A9 Polyclonal Antibody - Protocols

Provided below are standard protocols that you may find useful for product applications.

- [Western Blot](#)
- [Blocking Peptides](#)
- [Dot Blot](#)
- [Immunohistochemistry](#)
- [Immunofluorescence](#)
- [Immunoprecipitation](#)
- [Flow Cytometry](#)
- [Cell Culture](#)

SLC16A9 Polyclonal Antibody - Images



Sample:

Liver (Mouse) Lysate at 40 ug

Primary: Anti-SLC16A9 (bs-21200R) at 1/1000 dilution

Secondary: IRDye800CW Goat Anti-Rabbit IgG at 1/20000 dilution

Predicted band size: 56 kD

Observed band size: 56 kD