

SLC25A18 Polyclonal Antibody
Purified Rabbit Polyclonal Antibody (Pab)
Catalog # AP57931**Specification**

SLC25A18 Polyclonal Antibody - Product Information

Application	FC, IHC-P, WB
Primary Accession	O9H1K4
Reactivity	Rat
Host	Rabbit
Clonality	Polyclonal
Calculated MW	33849

SLC25A18 Polyclonal Antibody - Additional Information**Gene ID** 83733**Other Names**

Mitochondrial glutamate carrier 2, GC-2, Glutamate/H(+) symporter 2, Solute carrier family 25 member 18, SLC25A18, GC2

Format

0.01M TBS(pH7.4), 0.09% (W/V) sodium azide and 50% Glyce

Storage

Store at -20 °C for one year. Avoid repeated freeze/thaw cycles. When reconstituted in sterile pH 7.4 0.01M PBS or diluent of antibody the antibody is stable for at least two weeks at 2-4 °C.

SLC25A18 Polyclonal Antibody - Protein Information**Name** SLC25A18 ([HGNC:10988](#))**Synonyms** GC2**Function**

Responsible for the transport of glutamate from the cytosol into the mitochondrial matrix with the concomitant import of a proton (symport system).

Cellular Location

Mitochondrion inner membrane {ECO:0000250|UniProtKB:Q505J6}; Multi-pass membrane protein

Tissue Location

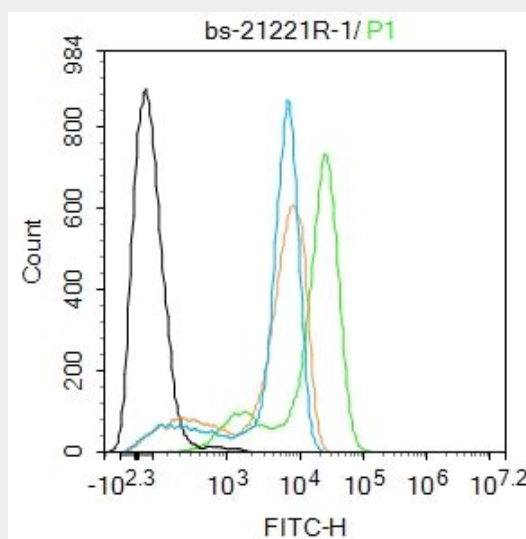
Expressed in brain, to a lesser extent in testis, and poorly in all the other tissues.

SLC25A18 Polyclonal Antibody - Protocols

Provided below are standard protocols that you may find useful for product applications.

- [Western Blot](#)
- [Blocking Peptides](#)
- [Dot Blot](#)
- [Immunohistochemistry](#)
- [Immunofluorescence](#)
- [Immunoprecipitation](#)
- [Flow Cytometry](#)
- [Cell Culture](#)

SLC25A18 Polyclonal Antibody - Images



Blank control: THP-1.

Primary Antibody (green line): Rabbit Anti-SLC25A18 antibody (bs-21221R)

Dilution: 1 μ g /10⁶ cells;

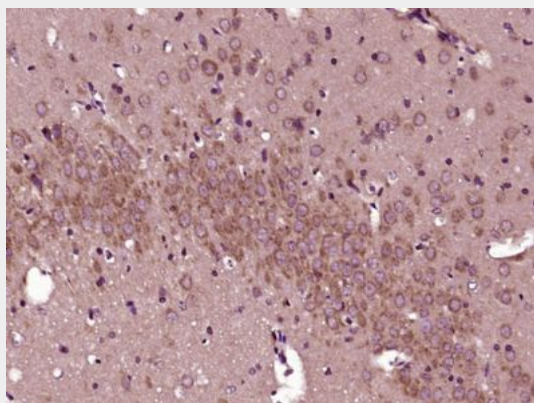
Isotype Control Antibody (orange line): Rabbit IgG .

Secondary Antibody : Goat anti-rabbit IgG-FITC

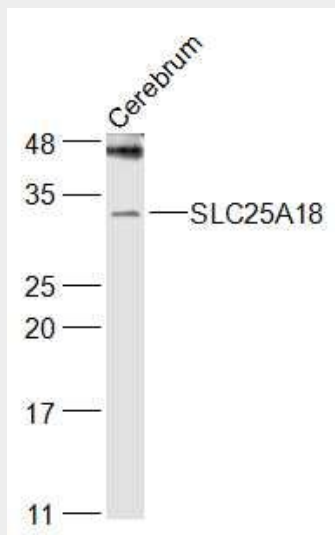
Dilution: 1 μ g /test.

Protocol

The cells were fixed with 4% PFA (10min at room temperature) and then permeabilized with 0.1% PBST methanol for 20 min at room temperature. The cells were then incubated in 5% BSA to block non-specific protein-protein interactions for 30 min at room temperature. Cells stained with Primary Antibody for 30 min at room temperature. The secondary antibody used for 40 min at room temperature. Acquisition of 20,000 events was performed.



Paraformaldehyde-fixed, paraffin embedded (Rat brain); Antigen retrieval by boiling in sodium citrate buffer (pH6.0) for 15min; Block endogenous peroxidase by 3% hydrogen peroxide for 20 minutes; Blocking buffer (normal goat serum) at 37°C for 30min; Antibody incubation with (SLC25A18) Polyclonal Antibody, Unconjugated (bs-21221R) at 1:400 overnight at 4°C, followed by operating according to SP Kit(Rabbit) (sp-0023) instructions and DAB staining.



Sample:

Cerebrum (Mouse) Lysate at 40 ug

Primary: Anti-SLC25A18 (bs-21221R) at 1/1000 dilution

Secondary: IRDye800CW Goat Anti-Rabbit IgG at 1/20000 dilution

Predicted band size: 34 kD

Observed band size: 34 kD