

KLHL6 Antibody (C-term)
Affinity Purified Rabbit Polyclonal Antibody (Pab)
Catalog # AP5793b**Specification**

KLHL6 Antibody (C-term) - Product Information

Application	FC, WB, IHC-P,E
Primary Accession	Q8WZ60
Other Accession	NP_569713.2
Reactivity	Human, Mouse
Host	Rabbit
Clonality	Polyclonal
Isotype	Rabbit IgG
Calculated MW	70359
Antigen Region	543-571

KLHL6 Antibody (C-term) - Additional Information**Gene ID** 89857**Other Names**

Kelch-like protein 6, KLHL6

Target/Specificity

This KLHL6 antibody is generated from rabbits immunized with a KLH conjugated synthetic peptide between 543-571 amino acids from the C-terminal region of human KLHL6.

Dilution

FC~~1:10~50

WB~~1:1000

IHC-P~~1:50~100

E~~Use at an assay dependent concentration.

Format

Purified polyclonal antibody supplied in PBS with 0.09% (W/V) sodium azide. This antibody is purified through a protein A column, followed by peptide affinity purification.

Storage

Maintain refrigerated at 2-8°C for up to 2 weeks. For long term storage store at -20°C in small aliquots to prevent freeze-thaw cycles.

Precautions

KLHL6 Antibody (C-term) is for research use only and not for use in diagnostic or therapeutic procedures.

KLHL6 Antibody (C-term) - Protein Information**Name** KLHL6

Function Involved in B-lymphocyte antigen receptor signaling and germinal center formation.

Tissue Location

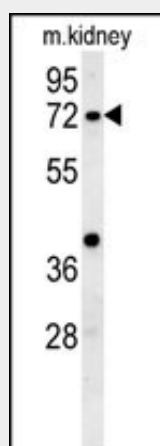
Found in germinal center B-cells.

KLHL6 Antibody (C-term) - Protocols

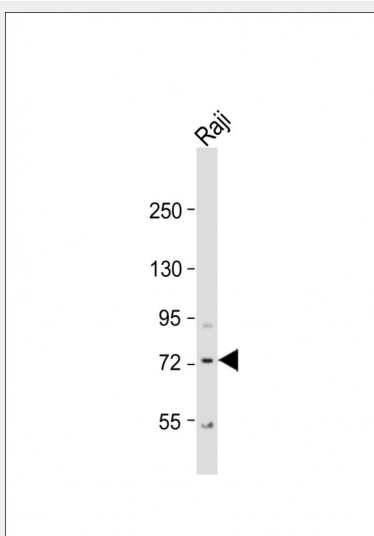
Provided below are standard protocols that you may find useful for product applications.

- [Western Blot](#)
- [Blocking Peptides](#)
- [Dot Blot](#)
- [Immunohistochemistry](#)
- [Immunofluorescence](#)
- [Immunoprecipitation](#)
- [Flow Cytometry](#)
- [Cell Culture](#)

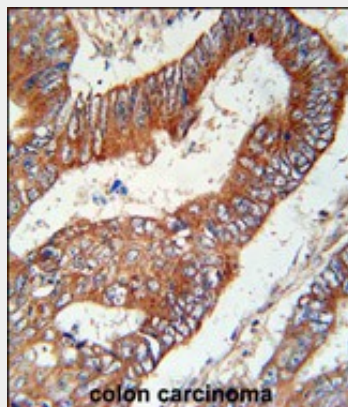
KLHL6 Antibody (C-term) - Images



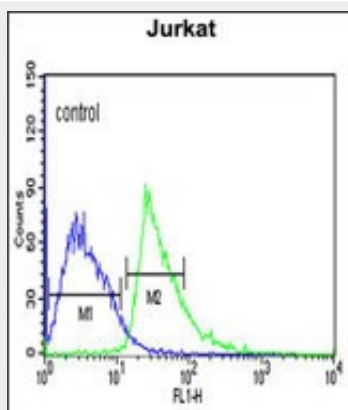
KLHL6 Antibody (C-term) (Cat. #AP5793b) western blot analysis in mouse kidney tissue lysates (15ug/lane). This demonstrates the KLHL6 antibody detected KLHL6 protein (arrow).



Anti-KLHL6 Antibody (C-term) at 1:1000 dilution + Raji whole cell lysate Lysates/proteins at 20 µg per lane. Secondary Goat Anti-Rabbit IgG, (H+L), Peroxidase conjugated at 1/10000 dilution. Predicted band size : 70 kDa Blocking/Dilution buffer: 5% NFDM/TBST.



KLHL6 Antibody (C-term) (Cat. #AP5793b) immunohistochemistry analysis in formalin fixed and paraffin embedded human colon carcinoma followed by peroxidase conjugation of the secondary antibody and DAB staining. This data demonstrates the use of the KLHL6 Antibody (C-term) for immunohistochemistry. Clinical relevance has not been evaluated.



KLHL6 Antibody (C-term) (Cat. #AP5793b) flow cytometric analysis of Jurkat cells (right histogram) compared to a negative control cell (left histogram). FITC-conjugated goat-anti-rabbit secondary antibodies were used for the analysis.

KLHL6 Antibody (C-term) - Background

Involved in B-lymphocyte antigen receptor signaling and germinal center formation

KLHL6 Antibody (C-term) - References

Gupta-Rossi, N., et al. Mol. Immunol. 39(13):791-799(2003)
Hattori, A., et al. DNA Res. 7(6):357-366(2000)