

SLC36A2 Polyclonal Antibody
Purified Rabbit Polyclonal Antibody (Pab)
Catalog # AP57957**Specification**

SLC36A2 Polyclonal Antibody - Product Information

Application	IHC-P
Primary Accession	Q495M3
Reactivity	Rat
Host	Rabbit
Clonality	Polyclonal
Calculated MW	53216

SLC36A2 Polyclonal Antibody - Additional Information**Gene ID** 153201**Other Names**

Proton-coupled amino acid transporter 2, Proton/amino acid transporter 2, Solute carrier family 36 member 2, Tramdorin-1, SLC36A2, PAT2, TRAMD1

Format

0.01M TBS(pH7.4), 0.09% (W/V) sodium azide and 50% Glyce

Storage

Store at -20 °C for one year. Avoid repeated freeze/thaw cycles. When reconstituted in sterile pH 7.4 0.01M PBS or diluent of antibody the antibody is stable for at least two weeks at 2-4 °C.

SLC36A2 Polyclonal Antibody - Protein Information**Name** SLC36A2 ([HGNC:18762](#))**Function**

Electrogenic proton/amino acid symporter with a high selectivity for the small side chains amino acids glycine, alanine and proline, where both L- and D-enantiomers are transported. Extension of the backbone length, as in beta-alanine and 4-aminobutanoate or methylation of the amino group, as in sarcosine and N,N- dimethylglycine, are also tolerated but decrease transport efficiency. A free carboxyl group is preferred.

Cellular Location

Cell membrane; Multi-pass membrane protein. Endoplasmic reticulum membrane {ECO:0000250|UniProtKB:Q8BHK3}. Recycling endosome membrane {ECO:0000250|UniProtKB:Q8BHK3}

Tissue Location

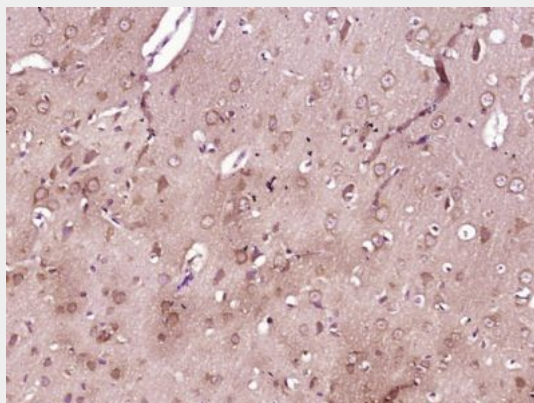
Abundantly expressed in kidney and muscle. Expressed in the S1 segment of the proximal tubule close to the glomerulus.

SLC36A2 Polyclonal Antibody - Protocols

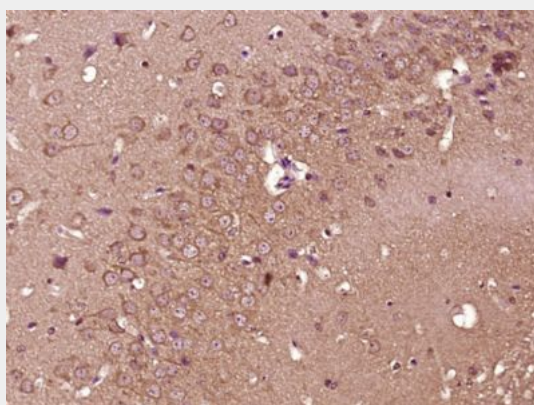
Provided below are standard protocols that you may find useful for product applications.

- [Western Blot](#)
- [Blocking Peptides](#)
- [Dot Blot](#)
- [Immunohistochemistry](#)
- [Immunofluorescence](#)
- [Immunoprecipitation](#)
- [Flow Cytometry](#)
- [Cell Culture](#)

SLC36A2 Polyclonal Antibody - Images



Paraformaldehyde-fixed, paraffin embedded (Rat brain); Antigen retrieval by boiling in sodium citrate buffer (pH6.0) for 15min; Block endogenous peroxidase by 3% hydrogen peroxide for 20 minutes; Blocking buffer (normal goat serum) at 37°C for 30min; Antibody incubation with (SLC36A2) Polyclonal Antibody, Unconjugated (bs-21271R) at 1:400 overnight at 4°C, followed by operating according to SP Kit(Rabbit) (sp-0023) instructions and DAB staining.



Paraformaldehyde-fixed, paraffin embedded (Mouse brain); Antigen retrieval by boiling in sodium citrate buffer (pH6.0) for 15min; Block endogenous peroxidase by 3% hydrogen peroxide for 20 minutes; Blocking buffer (normal goat serum) at 37°C for 30min; Antibody incubation with (SLC36A2) Polyclonal Antibody, Unconjugated (bs-21271R) at 1:400 overnight at 4°C, followed by operating according to SP Kit(Rabbit) (sp-0023) instructions and DAB staining.